

48th Annual

Ward World Championship

April 27, 28, 29, 2018



Celebrating Wildfowl Art

Roland E. Powell Convention Center • 4001 Coastal Highway • Ocean City, Maryland 21842



WARD MUSEUM OF WILDFOWL ART
SALISBURY UNIVERSITY



Spend A Week With The



WARD
MUSEUM
SALISBURY UNIVERSITY

909 S. Schumaker Drive • Salisbury, MD 21804
410-742-4988 • www.wardmuseum.org



Welcome

Here is your official guide to the 48th Annual Ward World Wildfowl Carving Competition and Art Festival. We anticipate another enthusiastic turnout at the Roland E. Powell Convention Center April 27-29, 2018. From the novice carver to the World Champion, this publication provides full details on the Ward World Championship. We hope you are already planning to participate in the largest and longest running wildfowl carving competition in the world.



Highlights for the 2018 World Championship Include:

- Living Legend Dinner Honoring Oliver Lawson, Robert Kerr and David Turner
- Return of the Fish Carving Division and Feathers and Fronds Divisions
- A new category in the Champagne Division for non-floating carvings

As you plan your weekend, be sure to set aside time to participate in the Educational Classes and Conference which is a major professional development and networking opportunity for all levels of artists.

The best way to stay on top of news and updates related to the Ward Museum and the Ward World Championship is to subscribe for email updates at www.wardmuseum.org or follow us on Facebook.

Your support and enthusiasm makes this event a success every year, we look forward to another great year together. Thank you!

Best regards,

Lora Bottinelli, Executive Director

COMPETITION COMMITTEE

Shaina Adkins – Chair,
Rich Smoker – Board Liaison

Jack Cox, Del Herbert, Arthur Leonard, Pam Morris, Bennett Scott and Tom Horn

Photographs by Chad Buterbaugh,
Alan Wycheck and Ward Museum staff/volunteers

Roland E. Powell Convention Center
4001 Coastal Highway
Ocean City, Maryland 21842

SHOW HOURS

- Friday, April 2710 a.m.-5 p.m.
- Saturday, April 289 a.m.-5 p.m.
Award Ceremony5:30 p.m.
- Sunday, April 2910 a.m.-4 p.m.

ADMISSION

- Multi-Day Pass\$10
- Seniors and Students\$8
- Children 12 and UnderFree
(if accompanied by an adult)

ENTRY FEES

ALL NON-MEMBERS WILL BE CHARGED
A \$10 ASSESSMENT FEE AT REGISTRATION

- World Championship A, B, C, D, SR
.....\$150 each division
- Masters Class\$100 first entry
.....\$50 each add'l
- Advanced\$60 first entry
.....\$35 each add'l
- Intermediate\$35 first entry
.....\$15 each add'l
- Novice\$20 first entry
.....\$10 each add'l
- Lem & Steve Ward Divisions
.....\$35 first entry
.....\$15 each add'l
- YouthPaid for by Gary and Pam Stenger
- Sculpture\$75 first entry
.....\$35 each add'l
- Feathers and Fronds\$50 first entry
.....\$20 each add'l
- Fish Carving\$50 first entry
.....\$20 each add'l

MAJOR CHANGES LISTED ON THE CENTER FOLD OF THIS GUIDE

Look for ☉ symbol throughout the guide that will indicate any major rule changes, additions or clarifications.

For rules & information: 410-742-4988, ext. 106
For classes & seminars: 410-742-4988, ext. 115
Visit our web site at www.wardmuseum.org

TABLE OF CONTENTS

■ Entry Fees2
■ Conference Schedule3
■ Living Legends Award4
■ Registration5
■ Schedule5
■ World Competition Rules6
■ Competitions and Competition Levels	
World Championship7
Masters8
Advanced/Intermediate/Novice9
Youth Competition10
Wildlife Sculpture Competition10
Lem and Steve Ward	
Hunting Decoys11
Decorative Smoothie12
Feathers and Fronds13
Fish Carving13
■ Species Lists14
■ Competition Diagram15-16
■ Competition Rule Changes15
■ Mail-In Guidelines17
■ Accommodations17

Cover Photo: Best in World Decorative
Lifesize Wildfowl - Reddish Egret
by Gary Eigenberger of Green Bay, WI

FUNDED IN PART BY



SU is an Equal Opportunity/AA/Title IX university and provides reasonable accommodation given sufficient notice to the University office or staff sponsoring the event or program. For more information regarding SU's policies and procedures, please visit www.salisbury.edu/equity.

2018 Adult & Youth Education Conference

Register online at www.wardmuseum.org

CLASSES

Monday-Sunday, April 23-29

Learn to create award-winning carvings with World Champion and professional carvers at the 2018 Educational Conference. A full menu of one-, two-, three- and four-day classes will be offered by the Education Department in conjunction with the Ward World Championship. Classes occur prior to the competition in various locations throughout Ocean City, MD, starting Monday, April 23, and continuing through Sunday, April 29. Here is a preview of the exciting offerings that will be available during the conference.

**4-DAY CLASSES: MONDAY-THURSDAY
APRIL 23-26**

\$450 MEMBER; \$500 NON-MEMBER

- **Jerry Painter: Miniature Carving and Painting Techniques** — A survey of miniature techniques, including habitat, composition, legs and feet, and miniature-specific texturing. Instruction will be individualized. Each student can choose whether they'd like to start from a standard design or apply Jerry's techniques to their own custom project.



- **Laurie Truehart: Carve and Paint a Male American Kestrel** —

Focusing on detail and the overall essence of this amazing bird of prey, a mix of hand tools and rotary tools will be used to create a realistic depiction of North America's smallest falcon. Laurie and Mike Truehart will instruct carvers of all levels in this fun and informative class. The instructors will provide reference material, blanks, paint and some tools.



- **Al Jordan** — Look for title and details on the Ward Museum website as the date approaches.

**3-DAY CLASS: TUESDAY-THURSDAY
APRIL 24-26**

\$350 MEMBER; \$400 NON-MEMBER

- **Rich & Ross Smoker: Carve and Paint a Ward Bros. Black Duck** — Beginner-advanced, micro-motor or hand tool carving. Join Rich and Ross Smoker to carve, paint and finish a classic Ward Brothers-style black duck. Carve the body and the head, then finish it up with oil paints modified to express age.
- **Glenn McMurdo: Paint a Killdeer** — Beginner-advanced. Using brushes and acrylic paints on cast from an original carving by Glenn McMurdo, add a soft and fluffy look to the finished piece. Learn color theory, how to add and blend colors, and how to paint final detail, as well as the how and why of paint and paintbrushes.

- **Jeff Rechin: Sculpt & Paint a Blackburnian**

Warbler — Learn the subtle techniques required to bring life to this beautiful bird. Create a non-textured Blackburnian warbler through keen sculpting of a tupelo bird and base, then give it details and depth with striking paint.



**2-DAY CLASS: WEDNESDAY-THURSDAY
APRIL 25-26**

\$275 MEMBER; \$325 NON-MEMBER

Pat Godin — Look for title and details on the Ward Museum website as the date approaches.

1-DAY CLASS: SUNDAY, APRIL 29

\$80 MEMBER; \$100 NON-MEMBER

Ross Smoker — Carving for Beginners : Ross Smoker leads a class in basic carving techniques to create a miniature shorebird. Participants will finish class with an unpainted shorebird. Tools and materials provided.

More Classes to come, check: www.wardmuseum.org

*Pre-registration is required for all classes. Deposit payments are due by **Friday, March 2.***

**SPECIAL EDUCATION CONFERENCE PASS
(AVAILABLE ONLINE ONLY)**

\$27 MEMBER; \$30 NON-MEMBER

Enjoy access to ALL signature lecture series presentations and one technique workshop.

**SIGNATURE LECTURES • PERFORMING ARTS
CENTER • FRIDAY, APRIL 26**

\$3 MEMBER; \$4 NON-MEMBER

Signature lectures presented in the Performing Arts Center at the Ocean City Convention Center are theatre-style presentations with visual aids and amplification for educational lectures from leading artists and carvers at the competition. Attending a lecture is a great way to enhance your visit to the Ward World Championship. Learn techniques to create award-winning carvings from champion and professional carvers. Youth ages 17 and under receive FREE admission to lectures in the Performing Arts Center.

TECHNIQUE WORKSHOPS

Saturday-Sunday, April 28-29

\$18 ONLINE PRE-SALE

\$22 MEMBER; \$25 NON-MEMBER

Attending a workshop is a great way to build skills and learn new techniques. Or, a workshop can be a chance to learn about a whole new style or division. Workshops last two hours and are an excellent way to get up close and personal with carvers and artists in fascinating areas of wildfowl and sculpture art. Workshops cover a wide range of topics from novice to advanced techniques and are designed with all audiences in mind — visitors, competitors and judges.



KIDS CORNER

**Friday-Saturday • 10 a.m.-5 p.m.
Sunday • 10 a.m.-4 p.m.**

Children of all ages can enjoy Kid's Corner. Plan to visit Kid's Corner for arts and crafts designed to stimulate curiosity and participation in the arts. Featured activities include painting miniature decoys, soap carving and carving using child-safe tools. Carve and Paint the 2018 Red Knot Youth Silhouette and more!



Please Note: Conference pricing does not include admission into the competition hall or admission to the Ward Museum. Pre-registration is required for all classes, fieldtrips and seminars with limited seating.



Ward Foundation Living Legend Awards



This award recognizes individuals who:

- Have been long-time advocates for wildfowl art and the Ward Museum.
- Are generous in spirit and commitment to teaching others and passing on their knowledge, skills and talents.
- Have created an impact on the field of wildfowl art and/or the Ward World Championship Wildfowl Carving Competition.

Living Legend Awards Ceremony
Performing Arts Center • Friday April 27, 2018 • 5 p.m.

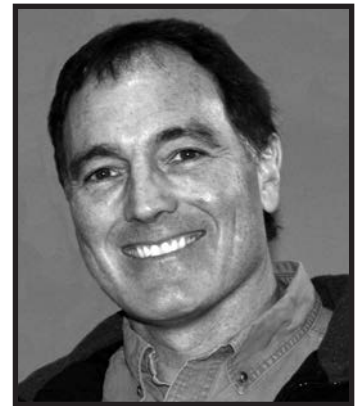
Announcing the 2018 Recipients



Oliver Lawson



Robert Kerr



David Turner

Read the extended biographies of all Ward Foundation Living Legends at www.wardmuseum.org

Living Legend Award Dinner

Come celebrate the 2018 Living Legends on Friday April 27, 2018



Grand Hotel & Spa
2100 Baltimore Avenue,
Ocean City, Maryland 21842

Friday, April 27 • 6-9 p.m.

Enjoy an evening honoring this year's recipients at the Grand Hotel & Spa, located on the famous Ocean City boardwalk. Tickets are \$65 for Ward Museum members, \$75 non-members. Seats are limited, get your tickets early.

Consider a sponsorship of this event. The Living Legend awards are made possible through the generous support of the wildfowl art community. Gifts of \$150 or more will be recognized as sponsors of the awards. Gifts of \$250 or more will be recognized as Signature Sponsors and will receive 2 tickets to the dinner and enhanced recognition.

Tickets and sponsorship of the Living Legend Dinner can be done using the enclosed order form or visit www.wardmuseum.org.

The Grand Hotel is offering special rate to all carvers, competitors and guests. Check out the special early birds rates on page 17 or give them a call.

Registration

Thursday, April 26, from 11 a.m.-8 p.m. and Friday, April 27, from 7-9 a.m.

LOCATION:

Roland E. Powell Convention Center, 40th and Coastal Highway, Ocean City, Maryland.

- All entries must be hand-delivered either by the carver or a designated second party, except for mail-ins.
- Mail-in entries will be accepted for Lem & Steve and Youth. See page 17 for instructions.
- Entry fees are paid at registration. Registration form will be completed **on site**.
- The Ward Foundation will assign a registration number when your entries are processed.
- The name of the competitor should not be visible on entries; covering with masking tape is adequate. **The name of the species should be on the bottom of the base.**
- Competitors will receive a competitor badge and can purchase guest badges at registration, \$5 members and \$10 non-members.
- Competitors will be allowed early admittance to the show at 8 a.m. Sunday. Official competitor name badges must be visibly worn to gain entry during these pre-show

hours. Competitor's guests, with guest badges, may accompany competitor.

- **We do not allow removal of entries before 4 p.m. Sunday.** All persons removing carvings must be carrying the registration receipt for those carvings.
- Competitors are asked to submit documented reference materials at the time of registration for those birds not listed in National Audubon Society *The Sibley Guide to Birds*. These reference materials are for the accurate judging of your bird.
- Provide documentation at registration about the construction of your entry that would help the judging process, i.e. structural strengthening techniques used in SR. These notations will be given to the judges for their attention during their initial evaluation.
- **Any artist with an entry not suitable for tabletop display is required to notify the Ward Foundation by April 2. Under no circumstances should an artist drill an entry or base onto a table in the convention center.**
- Artists are encouraged to place their business cards beside their work after judging is completed. Names of carvers of the Champagne Waterfowl Division entries will be identified by the Ward Foundation after judging.

- Youth carvers are welcome to enter "adult" levels of competition but once a carving is entered outside of the youth competition, it is no longer eligible to be judged in the youth competition.
- **Please note that once an entry is placed in the competition hall, competitors will not be allowed to move their entry for any reason without prior permission of the show director or a floor captain nor enter the center areas of the World and Master divisions.**
- Contact The Ward Foundation at 410-742-4988 ext. 106, or e-mail WardEvents@salisbury.edu with any questions. Visit us on the Web at www.wardmuseum.org.
- The ultimate responsibility of accurately registering an entry rests with the carver. The Competition Committee reserves the right to move a carving prior to judging if it is discovered that it was inappropriately registered or misplaced.
- Sample Registration forms online at www.wardmuseum.org/SpecialEvents/WorldChampionships/BecomeaCompetitor/tabid/123/Default.aspx Scroll to the bottom of the page and click on needed sample.

Schedule

Judging

FRIDAY

8:30 a.m.: Clerks' Meeting

8:30 a.m.: Judges' Meeting

9:30 a.m.: WORLD DIVISIONS

- A - Decorative Life-size Wildfowl
- C - Decorative Miniature Wildfowl
- D - Interpretive Wood Sculpture

10 a.m.

- B - Decorative Life-size Waterfowl Pairs

10 a.m.: ADVANCED, INTERMEDIATE, NOVICE DIVISIONS

- E - Decorative Life-size Floating Waterfowl
- F - Decorative Life-size Wildfowl
- G - Decorative Miniature Wildfowl - Novice then Intermediate
- H - Interpretive Wood Sculpture

10 a.m.: LEM & STEVE WARD DIVISIONS

- GP - Gunning Pair (Judged in Assawoman Bay*)

11 a.m.: MASTERS DIVISIONS

- ME - Decorative Life-size Floating Waterfowl
- MF - Decorative Life-size Wildfowl
- MG - Decorative Miniature Wildfowl
- MH - Interpretive Wood Sculpture

1 p.m. FEATHER, FRONDS AND FISH DIVISIONS

1:30 p.m. LEM & STEVE WARD DIVISIONS

- GPC - Gunning Pair Champion (Judged in Assawoman Bay*)

1:30 p.m.: ADVANCED DIVISIONS

- G - Decorative Miniature Wildfowl

2 p.m.: SCULPTURE COMPETITION

4:30 p.m.: INTERMEDIATE & NOVICE BEST IN SHOW

SATURDAY

9 a.m.: BENCH DIVISIONS

- J and JB - Bench Class

9 a.m.: LEM & STEVE WARD DIVISIONS

- CA - Contemporary Antique
- CD - Contemporary Decoys
- SD - Shorebird Decoy
- SW - Decorative Smoothie Waterfowl
- SWC - Decorative Smoothie Waterfowl Champion

10 a.m.: WORLD DIVISION

- SR - World Shootin' Rig (Judged in Assawoman Bay*)

11 a.m.: LEM & STEVE WARD DIVISIONS

- SS - Decorative Smoothie Shorebirds and Wading Birds
- CW - Champagne Waterfowl
- CWC - Champagne Waterfowl Champion

11 a.m.: YOUTH COMPETITION

(YG will be judged in Assawoman Bay at the conclusion of SR*)

Entries will be critiqued during a question and answer period between participants and judges when judging is complete.

* NOTE: Judging times on the Bay may be changed at the judges'/committee's discretion

Auction

SATURDAY

2 p.m.: PERFORMING ARTS CENTER

- Ward World Class Art and Carving Benefit Auction

Awards Presentations

FRIDAY

5 p.m.: LIVING LEGENDS AWARDS (PERFORMING ARTS CENTER)

6 p.m.: LIVING LEGENDS DINNER (THE GRAND HOTEL)

SATURDAY

5:30 p.m.: PERFORMING ARTS CENTER

- Youth
- Feather, Fronds and Fish
- Sculpture
- Divisions: Lem & Steve, Novice, Intermediate, Advanced
- Special Memorial Awards
- Dr. John P. Trabuchi Memorial Best Intermediate Diver
- William Schultz Memorial Intermediate Decorative Lifesize Wildfowl, Best in Waterfowl
- Richard "Dick" LeMaster Memorial Intermediate Decorative Lifesize Floating Waterfowl, Best Mallard Hen
- Mike Waverack Memorial Intermediate Decorative Lifesize Floating Waterfowl, Best Bufflehead
- Robert "Bob" Guge Memorial Award, Novice Decorative Lifesize Wildfowl, Best Songbird

6 p.m.:

- Masters

6:30 p.m.:

- World Championship

SUNDAY

2 p.m.:

- People's Choice Awards sponsored by Jaymes Company

3 p.m.:

- Drawing of Ward Brothers Decoy and Membership Raffles

2018 World Competition Rules

COMPETITION LEVELS

THE COMPETITION IS OPEN TO WOOD SCULPTORS OF ANY LEVEL OF ARTISTIC SKILL. IN ADDITION TO WORLD AND MASTERS, THERE ARE THREE GENERAL LEVELS OF COMPETITION: ADVANCED, INTERMEDIATE AND NOVICE.

Carvings are grouped together by levels indicated by colored banners hanging over the display areas.

- **World (white banners):** In the five World Divisions, entrants compete for the title of World Champion, championship ring and cash award.

- **Masters (turquoise banners):** Only carvers who have previously won two Best of Show awards in Advanced, or placed 1st, 2nd or 3rd in World in any division other than SR, Shootin' Rig are eligible to enter in Masters and are no longer eligible to enter Advanced. They are eligible to enter any of the four divisions of the Masters Class competition and/or they may elect to compete for a World title. This applies to either an individual carver or a carver in partnership with another artist. If it is discovered that a carver has entered Masters without meeting the eligibility requirement, the entry will be immediately removed from the Masters area. If judging has already occurred, any awards will be rescinded.

- **Advanced (blue banners):** This level represents advanced amateur and professional carvers, including those who have obtained top rankings in competitions. Entrants compete for cash awards, ribbons and rosettes. Advanced is not open to MASTER carvers. Any carver who is not eligible for Masters but has entered at the World Level, must enter Advanced.

- **Intermediate (yellow banners):** This level includes carvers who have refined their sculpture and painting skills beyond the novice level. Intermediate carvers compete for ribbons, rosettes and Best in Show cash awards. Carvers who have won one Best in Show or two Best in Division (excluding Bench) awards at this level in the World Competition must move to the Advanced level. Carvers who have been consistent blue ribbon winners at this level are encouraged to move up to Advanced.

- **Novice (red banners):** This level is reserved for entry-level carvers. Novice carvers compete for ribbons, rosettes and Best in Show cash awards. Carvers who have won one Best in Show or two Best in Division (excluding Bench) awards at this level in the World Competition must move to the Intermediate level. Carvers who have been consistent blue ribbon winners at this level are encouraged to move up to Intermediate.

JUDGING CRITERIA

The following definitions of judging criteria have been adopted by the Ward Foundation. Each criteria is given equal weight in the judging process. These criteria will be used for all of the following levels of competition — World, Masters, Advanced, Intermediate, and Novice — in all divisions except Interpretive:

- **Technique/Craftsmanship** refers to the technical skills involved in bird carving: sculpting, painting and finishing techniques and their execution. It covers the bird or birds, any habitat or accessories that may be involved and the base itself if there is one. Craftsmanship should be consistent throughout the entire piece. Good craftsmanship is basic to bird carving. Without it, a piece will go no further.

- **Accuracy** involves the correctness of a piece from a scientific perspective. Is the bird the right size? Are the feathers the right shape? Is the coloration and pattern correct? Are the eyes properly placed? Do the toes have the right number of joints and are they in the right places? All these are questions of accuracy. Anything accompanying the bird must be given the same scrutiny. Accuracy involves the natural history of the whole piece, all of its components and the appropriateness of these components together.

- **Essence of the Species** involves taking accuracy one step further. It involves a thorough knowledge of one's subject and the ability to capture an attitude in wood. You see a bird on your lawn at dusk. You can't see any details in the failing light, just a silhouette, and yet the hop and cock of the head immediately identify it as a robin. The essence of the bird is there without a feather count, a measurement of length or a check on color. You may have flawlessly crafted your bird with faultless accuracy, but unless you have captured the essence of your subject and given it the spark that brings it alive, your bird will not achieve its fullest potential.

- **Artistry** of a piece involves its design and composition. This is where presentation, innovation and creativity all come into play. There should be a beauty in the concept apart from the beauty of the bird itself. Line, form, content, color, mass and movement should all be working together to create an integrated whole. Of all the concerns in carving, artistry is the most elusive, the most difficult to explain, to teach, to analyze in the work of others, and to instill in one's own work. But the difficulty is an indication of the importance.

- **Overall Presentation.** What is rare is often what is valuable. Bird carving requires a multitude of technical skills brought together in overall presentation. Additionally, it requires a thorough knowledge and understanding of birds scientifically as well as emotionally. But most importantly, it involves the ability to bring all these elements together artistically. If bird carving is to move beyond craft to art, our goals and expectations must do the same. No artificial lighting will be used during judging, artificial lights (handheld or tabletop) are not permitted and will not be on the display. ☺

- **All criteria are important.** They all overlap and build on each other. In order for a piece to reach its fullest potential it must succeed in all five areas simultaneously. For the sake of clarity we have dealt with them individually, but in reality the distinctions are not so clear cut.

As the competitor moves through the different levels of competition and eventually to the Masters and Advanced levels, technique/craftsmanship and accuracy as criteria are taken almost for granted, as these are the tools expected to have been mastered, allowing the artist to concentrate on essence of the species and artistry of the competition piece entered.

Some rules are open to individual interpretation, giving an artist as much artistic license as possible; some are very specific. It is up to the judges to interpret the rules with guidance from the Ward Foundation. The judges' decisions are final.

DECORATIVE MINIATURE MEASURING CRITERIA

Entries must be one half life-size or less. The Ward Museum reserves the right to move entries deemed too large for miniature to the bench class.

WATERFOWL PAIR

Unless otherwise stated, a waterfowl pair is a drake and a hen of the same species.

RULES FOR BEST IN CATEGORY AND DIVISION AWARDS

- **First, Second and Third in Category winners (Division E, CD, GP, SW and YG)** will be determined with First in Category being selected from the First in Species winners. Second in Category will be chosen from the remaining First in Species winners along with the Second in Species of the previously selected species. Third in Category will be chosen from the remaining First in Species winners plus the next runner up at the species level in the species previously selected for First and Second in Category. In other words, it is possible to select First, Second and Third in Category from the same species.

- **Best in Division (All Divisions except World's, MH & H)** will be selected from the winner of each of the Categories. Second in Division will be selected from the remaining First in Category winners plus the Second in Category winner from the previously chosen Category. Third in Division will be chosen from the remaining First in category winner(s) and the next runner up at the Category level in the category(ies) previously selected for First and Second Division. In other words, it is possible for judges to select First, Second and Third in Division from one species.

- **Division MH & H** will be judged for Best in Division with second and third awarded as well.

Competitors must submit documented reference materials at the time of registration for those birds not listed in the National Audubon Society *The Sibley Guide to Birds*. These reference materials are necessary for the accurate judging of your bird.

World Competition

World Championship

THE FIVE WORLD DIVISIONS PROVIDE THE OPPORTUNITY FOR ADVANCED LEVEL CARVERS TO COMPETE FOR THE TITLE OF WORLD CHAMPION. THESE ARE ELITE DIVISIONS FOR THOSE CARVERS WHOSE WORK DEMONSTRATES THE HIGHEST LEVEL OF ARTISTRY AND TECHNIQUE. JUDGING STANDARDS ARE THE MOST DEMANDING WITH THE VERY BEST CARVINGS EARNING THE TITLE "BEST IN WORLD." IF A CARVER ENTERS IN THE WORLD CLASS AND PLACES IN THE FUTURE THEY MUST ENTER MASTERS; IF THEY DO NOT PLACE AND NEVER HAVE PLACED, THEY MUST ENTER ADVANCED.

Any artist with an entry not suitable for tabletop display is required to notify the Ward Foundation by April 2, 2018.

ENTRY FEE

\$150 per entry, each division

Entries are limited to one per division. World division competitors entering additional pieces must enter at the Advanced levels or, if qualified, at the Masters level.

Divisions

- A — Decorative Life-size Wildfowl
- B — Decorative Life-size Waterfowl Pair
- C — Decorative Miniature Wildfowl
- D — Interpretive Wood Sculpture
- SR — Shootin' Rig

1. Entries must have been completed since April 30, 2017.
2. Entries must be original in design and concept. If after judging it is determined that this policy has been ignored, the award will be rescinded.
3. Entries are limited to one per Division, per entrant.
4. Species and sex must be designated on the entry.
5. Name of artist should not be visible.

Divisions A and C—Decorative Life-size Wildfowl and Decorative Miniature Wildfowl

Entries will be judged on Technique/Craftsmanship, Accuracy, Essence of Species, and Artistry and Overall Presentation.

1. The entry will consist of one or more birds of any species with emphasis on creating an innovative and artistic composition.
2. Entries are to be made of wood. Other materials may be used for habitat and structural purposes; however, they are to be hand formed with the exception of eyes.

Division B—Decorative Life-size Waterfowl Pair

The 2018 species is a Gadwall pair (Worldwide). Entries will be judged on Technique/Craftsmanship, Accuracy, Essence of the Species, Artistry, Overall Presentation and Proper Floatation.

1. Entries are to be made of wood; glass eyes are permitted and materials other than wood can be used in fragile tails and crests.
2. Entries will be floated in the tanks.

3. Judging for Decorative Life-size Waterfowl will be limited to the designated waterfowl only.
4. If a base is used, it must be separate from the carving and indicate placement. The base will not be considered part of the carving and will not be displayed during judging.
5. Any deterioration of the paint or structural integrity at the completion of judging will result in the disqualification of the entry.

Division C—Decorative Miniature Wildfowl

1. Entries must be one half life-size or less.

Division D—Interpretive Wood Sculpture

Entries will be judged on craftsmanship, artistry, interpretation of the essence of the wildfowl and originality. A carving should emphasize form, content and movement rather than a realistic duplication of the wildfowl. It should be presented in a style that provokes thought and wonder.

1. Subject may be entrant's choice from any wildfowl.
2. Entry is to be entirely of wood with the exception of the structural elements. The base may be of other material and will be considered as part of the sculpture. ♻️
3. If a supporting pedestal under the base is needed, it must be provided by the artist and it will not be considered as part of the sculpture.
4. Interpretive Wood Sculpture entries have no size restrictions.

Division SR—Shootin' Rig

These decoys are rooted in the classic gunning decoys' function and design. **As a World Class division, they are judged on Technique/Craftsmanship, Accuracy, Artistry, Overall Presentation and Proper Floatation.** Judging is a two-part process. It begins on the table where they are judged in hand and reviewed for compliance of the rules. Final judging is done while the entries are floating on Assawoman Bay at a minimal distance of 20 feet. Judges remain on the judge's platform until the judging is completed. Decoys once set remain at anchor for the duration of judging.

1. Any worldwide species of waterfowl, including pelagic and coastal seabirds, may be selected. All seasonal plumages are acceptable.
2. Three birds are required. A drake and hen of the same species with a third bird of choice.
3. Decoys shall be floated as a rig and they must self right. Anchor lines with a maximum length of 6 to 8 feet will be attached to each rig component. Sufficient weights are required.
4. Decoys will be judged under natural weather conditions in Assawoman Bay and demonstrate proper floatation.
5. Decoys shall be constructed of wood or cork; glass eyes are permitted. All vulnerable areas must be durable; materials other than wood can be used in fragile tails and crests. During registration, carvers have the option

Awards

Entries winning first place in each division will be on loan to the Ward Museum and exhibited by the Museum for one year.

A — Decorative Life-size Wildfowl

BEST IN WORLD—John Scheeler Memorial Award—\$6,000, World Champion ring, trophy and rosette
SECOND IN WORLD—\$3,000 and rosette
THIRD IN WORLD—\$1,500 and rosette

B — Decorative Life-size Waterfowl Pair

BEST IN WORLD—\$3,000, World Champion ring, trophy and rosette
SECOND IN WORLD—\$1,500 and rosette
THIRD IN WORLD—\$750 and rosette

C — Decorative Miniature Wildfowl

BEST IN WORLD—\$3,000, World Champion ring, trophy and rosette
SECOND IN WORLD—\$1,500 and rosette
THIRD IN WORLD—\$750 and rosette

D — Interpretive Wood Sculpture

BEST IN WORLD—\$3,000, World Champion ring, trophy and rosette
SECOND IN WORLD—\$1,500 and rosette
THIRD IN WORLD—\$750 and rosette

SR — Shootin' Rig

BEST IN WORLD—Jimmy Vizier Memorial Award—\$3,000, World Champion ring, trophy and rosette
SECOND IN WORLD—\$1,500 and rosette
THIRD IN WORLD—\$750 and rosette

World Life-size Waterfowl Pair Species:

2018
Gadwall
2019
Ruddy Duck
2020
Canada Goose

- to submit in writing any structural strengthening techniques used in their rig. This information will be identified by carver's number and given to the judges during their initial evaluation.
6. No burning or fine stoned texturing is allowed. However, simulated texture using gesso, modeling paste, or texture paint in combination with combing, scratching, or brushing is acceptable. Minimal carving techniques used to simulate feather texture on heads, i.e. merganser heads, are acceptable.
 7. Any deterioration of the paint or structural integrity at the completion of judging will result in the disqualification of the entry.

Masters

THE MASTERS CLASS OPENS UP OPPORTUNITIES FOR CHAMPION CARVERS TO ACHIEVE A NEW LEVEL OF EXCELLENCE IN THEIR ART AND TO BE RECOGNIZED AND HONORED WITH AWARDS AT THIS MOST COMPETITIVE LEVEL.

Only carvers who have previously won two Best of Division awards in Advanced, or placed 1st, 2nd or 3rd in World in any division other than SR, Shootin' Rig, are eligible to enter in Masters. They are eligible to enter any of the four divisions of the Masters Class competition and/or they may elect to compete for a World title. This applies to either an individual carver or a carver in partnership with another artist. If it is discovered that a carver has entered Masters without meeting the eligibility requirement, the entry will be immediately removed from the Masters area. If judging has already occurred, any awards will be rescinded.

Any artist with an entry not suitable for tabletop display is required to notify the Ward Foundation by April 2, 2018.

ENTRY FEES

\$100 first entry, \$50 each additional entry

Divisions

ME — Decorative Floating Life-size Waterfowl

MF — Decorative Life-size Wildfowl

MG — Decorative Miniature Wildfowl

MH — Interpretive Wood Sculpture

Species list on page 14.

1. Entries must have been completed since April 30, 2017. Entries must be original in design and concept. If after judging it is determined that this policy has been ignored, the award will be rescinded.
3. Entries are to be made out of wood. Other materials may be used for habitat and structural purposes; however, they are to be hand formed with the exception of eyes.
4. Multiple entries in each division are allowed.
5. Sex and species must be designated on the entry.
6. Name of the artist should not be visible.

Division ME — Decorative Life-size Floating Waterfowl

1. Decorative Life-size Floating Waterfowl consists of three categories: Marsh Ducks; Diving Ducks; and Geese, Swan and Confidence.
2. If the artist enters more than one carving of the same species, both sexes must be represented.
3. Entries are to be made of wood; glass eyes are permitted and materials other than wood can be used in fragile tails and crests.
4. Entries must float in a natural position but do not have to self-right.

5. Judging will be limited to the waterfowl floating in the tank only.
6. Any deterioration of the paint or structural integrity at the completion of judging will result in the disqualification of the entry.

Division MG — Decorative Miniature Wildfowl

1. Entries must be one half life-size or less.

Divisions ME, MF and MG

1. Entries will be judged on Technique/Craftsmanship, Accuracy, Essence of Species, and Artistry and Overall Presentation.
2. Divisions MF and MG are divided into the following categories with species in each category judged against one another:
 - Category 1: Waterfowl, Shorebirds, Wading Birds and Seabirds
 - Category 2: Upland Game Birds, Birds of Prey
 - Category 3: NP Land Birds and Songbirds.

Division MH — Interpretive Wood Sculpture

Entries will be judged on artistry, interpretation of the essence of the wildfowl and originality. A carving should emphasize form, content and movement rather than a realistic duplication of the wildfowl. It should be presented in a style that provokes thought and wonder.

1. Subject may be entrant's choice from any wildfowl.
2. Entry is to be entirely of wood with the exception of the base and eyes. The base may be of other material and will be considered as part of the sculpture.
3. If a supporting pedestal under the base is needed, it must be provided by the artist and it will not be considered as part of the sculpture.
4. Interpretive Wood Sculpture entries have no size restrictions.



Awards

ME — Masters Decorative Lifesize Floating Waterfowl			
	FIRST	SECOND	THIRD
3 Categories	\$200	\$100	\$50
Best in Masters	\$1000 Rosette & Medallion	\$500 Rosette & Medallion	\$250 Rosette & Medallion
MF — Masters Decorative Lifesize Wildfowl			
	FIRST	SECOND	THIRD
3 Categories	\$200	\$100	\$50
Best in Masters	\$1200 Rosette & Medallion	\$600 Rosette & Medallion	\$300 Rosette & Medallion
MG — Masters Decorative Miniature Wildfowl			
	FIRST	SECOND	THIRD
3 Categories	\$200	\$100	\$50
Best in Masters	\$1000 Rosette & Medallion	\$500 Rosette & Medallion	\$250 Rosette & Medallion
MH — Interpretive Wood Sculpture			
	FIRST	SECOND	THIRD
Best in Masters	\$1000 Rosette & Medallion	\$500 Rosette & Medallion	\$250 Rosette & Medallion



Special Thanks

Jeff and Marg Bounds wish to recognize the high level of achievement attained by the winners of this prestigious competition by sponsoring the Master Medallions in the memory of their parents, Charles and Eleanor Bounds.

Advanced, Intermediate and Novice

CARVERS MAY ENTER AT ONLY ONE LEVEL WITHIN ADVANCED, INTERMEDIATE AND NOVICE. WORLD DIVISION COMPETITORS ENTERING ADDITIONAL PIECES **MUST** ENTER AT THE ADVANCED LEVEL OR, IF QUALIFIED, AT THE MASTERS LEVEL.

Any artist with an entry not suitable for tabletop display is required to notify the Ward Foundation by April 2, 2018.

Advanced Class

REPRESENTS ADVANCED AMATEUR AND PROFESSIONAL CARVERS, INCLUDING THOSE WHO HAVE OBTAINED TOP RANKINGS IN COMPETITIONS.

ENTRY FEES

\$60 First entry, \$35 Each additional entry

Intermediate Class

THE INTERMEDIATE CLASS INCLUDES CARVERS WHO HAVE ADVANCED BEYOND THE NOVICE LEVEL. SEE PAGE 6.

ENTRY FEES

\$35 First entry, \$15 Each additional entry

Novice Class

THE NOVICE CLASS IS RESERVED FOR ENTRY-LEVEL CARVERS. SEE PAGE 6.

ENTRY FEES

\$20 First entry, \$10 Each additional entry

Divisions

E — Decorative Floating Life-size Waterfowl

F — Decorative Life-size Wildfowl

G — Decorative Miniature Wildfowl

H — Interpretive Wood Sculpture

J — Bench (Intermediate and Novice)

Entries must have been completed since April 30, 2017.

Species list on page 14.

Divisions E, F and G (Species List on page 16)

Entries will be judged on: Technique/Craftsmanship, Accuracy, Essence of the Species, Artistry and Overall Presentation.

1. ADVANCED and INTERMEDIATE entries must be original in design and concept. Work done directly from study birds, published patterns or a classroom project will NOT be considered as original in design and concept. **If after judging it is determined that this policy has been ignored, the award will be rescinded.** NOVICE carvers will be permitted to enter carvings created from published patterns. Entries created from study birds or classroom projects will not be permitted except in bench. Originality continues to be strongly encouraged.
2. Entries are to be made of wood. Other materials may be used for habitat and structural purposes; however, they are to be hand formed with the exception of eyes.
3. Novice only- Although hand-formed feet and legs are encouraged, novice carvers are permitted to use cast feet and legs.

4. Novice only — Although hand-formed habitat is encouraged, it is not required.
5. Name of the artist should not be visible.

Division E — Decorative Life-size Floating Waterfowl

1. Entries must be life sized.
2. If the artist enters more than one carving of the same species, both sexes must be represented.
3. Materials other than wood can be used in fragile tails and crests.
4. Entries must float in a natural position but do not have to self-right.
5. Judging will be limited to the waterfowl floating in the tank only.
6. Any deterioration of the paint or structural integrity at the completion of judging will result in the disqualification of the entry.

Division F — Decorative Life-size Wildfowl

Entries must be life sized.

Division G — Decorative Miniature Wildfowl

Entries must be one half life-size or less. The Ward Museum reserves the right to move entries deemed too large for miniature to the bench class.

Division H — Interpretive Wood Sculpture

Entries will be judged on craftsmanship, artistry, interpretation of the essence of the wildfowl and originality.

A carving should emphasize form, content and movement rather than a realistic duplication of the wildfowl. It should be presented in a style that provokes thought and wonder

1. Subject may be entrant's choice from any wildfowl.
2. Entry is to be entirely of wood with the exception of the base and eyes. The base may be of other material and will be considered as part of the sculpture.
3. If a supporting pedestal under the base is needed, it must be provided by the artist and it will not be considered as part of the sculpture.
4. Interpretive Wood Sculpture entries have no size restrictions.

Division J — Bench (Intermediate and Novice Only)

This division is reserved for the entries that do not meet the rules for any other division. Classroom carvings, group projects with a group leader and carvings from cast study birds are permitted only in this division **and should be identified as such.** Entries will be divided into four major categories: waterfowl, shorebirds, songbirds and all other wildfowl.

1. Entries must be made of wood or cork. Glass eyes are permitted.
2. Waterfowl entries will not be floated during judging.

Awards/Advanced

E — Decorative Lifesize Floating Waterfowl

	FIRST	SECOND	THIRD
31 Species	\$25	ribbon	ribbon

	FIRST	SECOND	THIRD
3 Categories	\$150 rosette	\$75 ribbon	\$50 ribbon

Marsh Ducks, Diving Ducks, Geese & Confidence Decoys

	FIRST	SECOND	THIRD
Best in Division	\$500 rosette	\$250 rosette	\$125 rosette

F — Decorative Lifesize Wildfowl

	FIRST	SECOND	THIRD
8 Categories	\$150 rosette	\$75 ribbon	\$50 ribbon

Waterfowl, Shorebirds and Wading Birds, Seabirds, Upland Game Birds, Birds of Prey, NP Land Birds, Songbirds A, Songbirds B

	FIRST	SECOND	THIRD
Best in Division	\$500 rosette	\$250 rosette	\$125 rosette

G — Decorative Miniature Wildfowl

	FIRST	SECOND	THIRD
8 Categories	\$150	\$75	\$50

Waterfowl, Shorebirds and Wading Birds, Seabirds, Upland Game Birds, Birds of Prey, NP Land Birds, Songbirds A, Songbirds B

	FIRST	SECOND	THIRD
Best in Division	\$500 rosette	\$250 rosette	\$125 rosette

H — Interpretive Wood Sculpture

	FIRST	SECOND	THIRD
Best in Division	\$500 rosette	\$250 rosette	\$125 rosette

Awards/Intermediate and Novice

First, second and third place winners at the species level, Intermediate Division E, will receive ribbons. First, second and third in Category (Division E, F, G and J) will receive rosettes with second and third receiving ribbons. First, second and third in Division (Division E, F, G, H and J) will receive rosettes. Best in Show overall will be selected from the Division Winners.

INTERMEDIATE

BEST IN SHOW	FIRST	SECOND	THIRD
	\$100 rosette	\$50 rosette	\$25 rosette

NOVICE

BEST IN SHOW	FIRST	SECOND	THIRD
	\$100 rosette	\$50 rosette	\$25 rosette

Special Thanks

Jack Cox sponsors the Intermediate Division

Dr. Kent Kimmel & Dr. Ruth Carroll sponsors the Novice Division

Specialty Competitions

A. Danner Frazer Youth Competition

THIS COMPETITION IS TO ENCOURAGE YOUTH TO BECOME ENGAGED IN THE ART FORM OF WILDFOWL CARVING, PROVIDE A VENUE TO PRESENT THEIR CARVINGS TO THE PUBLIC AND GIVE THEM THE COMPETITION EXPERIENCE. ENTRIES MAY BE DONE UNDER THE SUPERVISION OF AN ADULT, BUT THE YOUTH MUST DO THE CARVING AND PAINTING. DIVISIONS WILL BE DIVIDED INTO CATEGORIES AND CATEGORIES INTO SPECIES IF THERE ARE THREE OR MORE NUMBER OF ENTRIES.

ENTRY FEE

\$5 Per entry - Donated

Division YD - Decorative Wildfowl

Each age group will be judged 1st, 2nd and 3rd Best in Division.

YD1 - 16-17 years of age at time of registration

YD2 - 12-15 years of age at time of registration

YD3 - 11 and under years of age at time of registration

1. Prior entries into World Youth Competition are not permitted.
2. Entries are to be life-size or less, realistic or interpretive in nature.
3. Decorative Waterfowl will not be floated.
4. Entries must be made of wood. Glass eyes are permitted. Other materials are permitted for habitat and structural purposes. Hand-formed habitat is encouraged but not required.

Division - YG Gunning Decoy

Entries will be reviewed for compliance prior to floating. The final judging of entries as gunning decoys shall be conducted while entries are floating on the bay at a minimum distance of 20 feet. Once set, decoys shall remain at anchor for the duration of judging. This division will be divided into three categories: Marsh Ducks; Diving Ducks; and Geese, Swan and Confidence.

YG1 - 15-17 years of age at time of registration

YG2 - 14 and under years of age at time of registration

1. Prior entries into competition at the World Championship

- are not permitted.
2. Carving should be simplistic without fragile areas. **No highly defined wings or undercut feathers.**
3. **Entries must have 6 feet of line and an anchor.** Decoys will be floated in the bay under natural conditions.
4. Painting should be simplistic. Combing and scratching are permitted.
5. Decoys must self right from any position except geese and confidence decoys which must right from the side.
6. Entries are to be made of wood, cork or stretched canvas; glass eyes are permitted and materials other than wood can be used in fragile tails and crests.
7. If entry is determined to be inappropriate for Gunning Division, it will be transferred to Decorative Division.

Division YS - Silhouette

Entries in this division can be done either as a group project or as an individual. One entry per person. Each age group will be judged 1st, 2nd, and 3rd Best in Group.

YS1 - 16-17 years of age at time of registration

YS2 - 12-15 years of age at time of registration

YS3 - 11 and under years of age at time of registration

1. This year's pattern is a Red Knot. Pattern is on Ward Museum website and inserted in the guide. Other patterns may be used.
2. Entries are to be made of wood, one inch thick or less and may be life-size or less in size.
3. Edges may be rounded; wing and bill definition permitted.
4. Glass eyes are permitted.
5. Must be mounted on a simple base with a wood or metal dowel.
6. Entries should be realistically painted.

Awards

Best in Division YD1, YD2, YD3, YG1, YG2, YS1, YS2 and YS3 will be on loan to the Ward Museum and exhibited by the Museum for one year.

YD – Decorative Wildfowl: YD1, YD2, YD3

FIRST	SECOND	THIRD
Rosette	Rosette	Rosette
Plaque		

Division YG – Gunning Decoy: YG1, YG2

3 Categories	FIRST	SECOND	THIRD
	Rosette	Rosette	Rosette
Best in Division	Rosette	Rosette	Rosette
	Plaque		

Division YS – Silhouette: YS1, YS2, YS3

FIRST	SECOND	THIRD
Rosette	Rosette	Rosette
Plaque		

Special Thanks

- Private Sponsors in memory of Mr. Frazer to encourage youth participation
- Entry fees provided by Gary and Pam Stenger
- Ribbons and Awards by Harry Jackson
- Silhouette Division supported by the Habbart Dean Memorial Fund



Wildlife Sculpture Competition Other Than Wood

ENTRY FEES / SCULPTURE

\$75 First entry

\$35 Each additional entry

1. Any sculpture that has not been entered into a prior World Championship may be entered into competition.
2. Wildlife sculptures must be original in design and concept and may either be wildfowl or wildlife in subject matter.
3. Sculpture may be life-size or miniature, realistic or interpretive in nature.
4. Artists may enter more than one sculpture.
5. Sculptures are to be of materials other than wood.

- A variety of finishing techniques may be utilized.
6. No casting from real wildlife is permitted.
 7. Winning artist's piece may, with permission of the artist, be exhibited at The Ward Museum of Wildfowl Art for a specified period of time after the competition if the Ward Museum desires.

Awards

Sculpture Division

	FIRST	SECOND	THIRD
Best in Show	\$400 rosette	\$200 rosette	\$100 rosette



Lem & Steve Ward Competition

ENTRY FEES: \$35 First entry; \$15 Each additional entry

Hunting Decoys

VIEW THE EVOLUTION OF DECOY CARVING THROUGH THE DIVISIONS OF THE LEM AND STEVE COMPETITION.

Divisions

CA — Contemporary Antiques
 CD, CDC — Contemporary Decoys
 GP, GPC — Gunning Pair
 SD — Shorebird Decoy
 JB — Bench

Entries must have been completed since April 30, 2017.

Species list on page 14.

Divisions CD, CDC, GP, GPC - Waterfowl are to be made of wood, cork or stretched canvas; glass eyes are permitted and materials other than wood can be used in fragile tails and crests.

Division CD & CDC — Contemporary Decoy

Entries are modern contest grade decoys, judged on form and function.

This division is divided into two levels, CD and CD Champion (CDC). The rules for each level are the same. CD is open to all except for those who qualify for the Champion level.

The Champion level will be divided into three Categories: Marsh Ducks, Diving Ducks and Geese, Swan and Confidence. Anyone who has placed in a World division, competes at the Masters level or has won two best in shows at the World in CD **must** enter the Champion level. Anyone can choose to enter CDC, but once they have competed at the CDC level they cannot return to the regular CD.

1. Decoys will be floated in the tanks and must self-right from any position, except Geese, Swan and Confidence, which must right only from their side(s). All entries will be judged for stability and proper floatation.
2. Carvings must have sturdy tails and all raised wings must be durable.
3. No burning or fine stoned texturing is allowed. However, simulated texture using gesso, modeling paste, or texture paint in combination with combing, scratching, or brushing is acceptable. Minimal carving techniques used to simulate feather texture on heads, i.e. merganser heads, are acceptable.
4. Painting techniques shall be typical of a modern functional decoy. Entries may include some simple blending of feather edges and internal markings, feather splits, highlighting and hand vermiculation. (Carvings with fully developed decorative painting should be entered into Smoothie Waterfowl.)
5. Any deterioration of the paint or structural integrity at the completion of judging will result in the disqualification of the entry.

Division GP & GPC — Gunning Pairs

This Division emphasizes simplicity and most resembles the functional tool of the decoy maker. Entries will be reviewed for compliance to rules prior to floating. Thereafter the judges will remain on the judge's platform

until judging is complete. The final judging of entries as functional decoys shall be conducted while entries are floating on the bay at a minimum distance of 20 feet. Once set, decoys will remain at anchor for the duration of judging.

This division will be divided into two levels, GP and GP Champion (GPC). The rules for each level are the same. GP is open to all except for those who qualify for the Champion level.

The Champion level will be divided into three Categories: Marsh Ducks, Diving Ducks and Geese, Swan and Confidence. Anyone who has placed in a World division or competes at the Masters level or has won 2 best in shows in CD or GP **must** enter the Champion level. Anyone can choose to enter GPC, but once they have competed in GPC level they cannot return to the regular GP.

1. Carving and painting should be functional enough to be used as tools for hunting. **NO undercut feathers.**
2. Decoys will be floated and must self-right from any position, except Geese, Swan and Confidence, which must right only from their side(s). All entries will be judged for stability and proper floatation.
3. **Entries must be tandem rigged with 2-3 feet of line between decoys and must have 6 feet of line and a weight.** They will be floated in the bay under natural conditions.
4. Carvings must be hen and drake of the same species and should be life size or over sized with no preference shown by judges.
5. No burning or fine stoned texturing is allowed. However, simulated texture using gesso, modeling paste, or texture paint in combination with combing, scratching, or brushing is acceptable. Minimal carving techniques used to simulate feather texture on heads, i.e. merganser heads, are acceptable.
6. **Simplicity of painting is required.**
7. Any deterioration of the paint or structural integrity at the completion of judging will result in the disqualification of the entry.
8. **For information about entering a Single Gunner see page 12 and 15.**

Division CA — Contemporary Antique

Decoys will be judged in hand to include all surfaces and attachments. Contemporary Antique will be divided into 10 categories representing Pristine for antique style pieces which have not been subjected to any field use with minimal wear and patina permitted and Worn for pieces which have received heavy field use in which moderate to severe deterioration is apparent. There will be five categories each for Pristine and Worn: Marsh Ducks, Diving Ducks, Geese and Confidence, Shorebirds and All Others.

1. **Entries can be inspired by old decoys from geographic areas but must be the carver's original design and interpretation of an 'old' decoy.**
2. Entries will be a **single** decoy. Multiple birds, waterfowling memorabilia and "copies" are not permitted.
3. All entries must be signed and dated.
4. Decoys should be made to look old by the manner in which they are carved, painted and finished.
5. Shorebirds and Wading Birds must be mounted on a dowel and have simple base.

Awards

Best in Division in CDC, GPC, CA and SD will be on loan to the Ward Museum and exhibited by the Museum for one year.

CD — Contemporary Decoy

	FIRST	SECOND	THIRD
31 Species	ribbon	ribbon	ribbon
3 Categories	rosette	rosette	rosette
Best in Division	rosette	rosette	rosette

CDC — Contemporary Decoy Champion

	FIRST	SECOND	THIRD
3 Categories	\$100	\$50	\$25
Best in Division	\$500 rosette	\$250 rosette	\$125 rosette

GP — Gunning Pairs

	FIRST	SECOND	THIRD
31 Species	ribbon	ribbon	ribbon
3 Categories	rosette	rosette	rosette
Best in Division	rosette	rosette	rosette

GPC — Gunning Pairs Champion

	FIRST	SECOND	THIRD
3 Categories	\$25 rosette	ribbon	ribbon
Best in Division	\$300 rosette	\$200 rosette	\$100 rosette

CA — Contemporary Antique

	FIRST	SECOND	THIRD
10 Categories	rosette	ribbon	ribbon
Best in Division	\$300 rosette	\$200 rosette	\$100 rosette

SD — Shorebird Decoy

	FIRST	SECOND	THIRD
7 Categories	rosette	ribbon	ribbon
Best in Division	\$300 rosette	\$200 rosette	\$100 rosette

JB — Bench

	FIRST	SECOND	THIRD
4 Categories	rosette	ribbon	ribbon
Best in Division	rosette	rosette	rosette

Division SD — Shorebird Decoy

Entries are contemporary shorebird decoys that emphasize simplicity of line and paint. The division is divided into seven categories. Please check Species List on page 16 for accepted species.

1. Entries will be a **single** decoy constructed of either wood or cork with no preference shown by the judges.
2. Separation between wings and tail is permitted providing both are durable.
3. Simplicity of painting is required.
4. **Must be mounted on a simple base with a wood or metal dowel.**

Division JB — Bench

This division is reserved for the entries that do not meet the rules for any other division. Classroom carvings, group projects with a group leader and carvings from cast study birds are permitted in this division. Entries will be divided into four categories: waterfowl, shorebirds, songbirds, and all other wildfowl.

1. Entries must be made of wood or cork. Glass eyes are permitted.
2. Waterfowl entries will not be floated during judging.
3. Entries will not be considered as gunning decoys, therefore may be textured.

Decorative Smoothie

This competition challenges the artist to capture the essence of the species via form and paint. Only the bird will be judged, feet and habitat will not be taken into consideration. Entries are non-textured carvings done to the artist's highest abilities. The carving will be judged for the likeness and essence of species and artistry. SW and SS are to be life-size. Only the Champagne Waterfowl Divisions will be floated.

Divisions

SW, SWC — Decorative Smoothie Waterfowl

SS — Decorative Smoothie Shorebirds and Wading Birds

CW, CWC — Champagne Waterfowl Division

Entries must have been completed since April 30, 2017.

Species list on page 14.

Division SW & SWC – Decorative Smoothie Waterfowl

This division will be divided into two levels, SW and SW Champion (SWC). The rules for each are the same. SW is open to all except those who must enter SW Champion.

The Champion level will be divided into three categories: Marsh Ducks; Diving Ducks; and Geese, Swan and Confidence. Anyone may choose to enter the Champion level, but anyone who has placed in a World Division, competes at the Masters or CD Champion level, or has won two best of divisions in Decorative Smoothie Waterfowl must enter the Champion level.

1. Entries will be a **single** decoy made of wood; glass eyes are permitted and materials other than wood can be used in fragile tails and crests.
2. Entries can either be flat bottomed or have a keel. Preference will not be given to either by the judges.
3. Sturdy tails are not required. Realism and creative postures are encouraged.
4. Decorative painting to the artist's highest ability, i.e. barbles, translucence and shading are encouraged.
5. No burning, **stoning** or fine texturing is allowed.
6. Groups of feathers can be defined, i.e. tertials, scapulars, sidepockets, etc.

Special Thanks

Guyette & Deeter for their Sponsorship of the Contemporary Antique Division.

Division SS - Decorative Smoothie Shorebirds and Wading Birds

1. Entries must be made of wood. Glass eyes are permitted.
2. Realism and creative postures are encouraged.
3. Decorative painting to the artist's highest ability is encouraged.
4. No burning or fine texturing is allowed.
5. The name of the species must be written on the bottom of the base.
6. Groups of feathers can be defined.

Division CW & CWC - Floating – Champagne Waterfowl Division ☺

Division CW&CWC - Non-Floating – Champagne Waterfowl Division ☺

Entries will be divided into four categories: Marsh Ducks, Diving Ducks, Geese, Swan and Confidence and Pelagic and Coastal Seabirds. This division will be divided into two levels, CW and CW Champion (CWC). The rules for each are the same. CW is open to all except those who must enter CW Champion. Anyone can choose to enter the Champion level, but anyone who has placed in a World Division; competes at the Masters, CD or SW Champion level; or has won two best of divisions in Champagne Waterfowl must enter the Champion level. Once a person has entered CWC, they are not eligible to return to CW.

1. Non-Floating Champagne Waterfowl will be subject to the same rules and regulations but will be judged on the table.
2. Non-Floating champagne Waterfowl should still fit within the 3 1/2 inch circle.

Special Thanks

Lew and Nancy Pearce sponsor the Champagne Waterfowl Division in memory of her father, who introduced them to the Ward Museum and wildfowl carving.

2018 Recognition Award

Chincoteague Decoy Carvers and Artists Association
will award the GP Best of Division winners

\$300-1st • \$200-2nd • \$100-3rd

Awards

Best in Division in SWC, SS, CW and CWC will be on loan to the Ward Museum and exhibited by the Museum for one year.

SW — Decorative Smoothie Waterfowl

	FIRST	SECOND	THIRD
31 Species	ribbon	ribbon	ribbon
3 Categories	rosette	rosette	rosette
Best in Division	rosette	rosette	rosette

SWC — Smoothie Waterfowl Champion

	FIRST	SECOND	THIRD
3 Categories	\$100	\$50	\$25
Best in Division	\$500 rosette	\$250 rosette	\$125 rosette

SS — Decorative Smoothie Shorebirds and Wading Birds

	FIRST	SECOND	THIRD
10 Categories	\$25 rosette	ribbon	ribbon
Best in Division	\$500 rosette	\$250 rosette	\$125 rosette

CW — Champagne Waterfowl

	FIRST	SECOND	THIRD
4 Categories	rosette	ribbon	ribbon
Best in Division	\$250* rosette	\$100 rosette	\$50 rosette

CWC — Champagne Waterfowl Champion

	FIRST	SECOND	THIRD
4 Categories	rosette	ribbon	ribbon
Best in Division	\$400* rosette	\$150 rosette	\$100 rosette

* Purchase Award

Interested in entering a Single Gunner?

Single Gunners may be entered into the 2018 auction. Birds will be floated in tanks and awarded



ribbons. Single Gunners will be judged Friday at 2:30 p.m. using Gunning pairs rules and standards alongside of other Singles. Single Gunners will be awarded 1st, 2nd, and 3rd place ribbons. Ducks will then be submitted to the auction for purchase. Enter for free and donate at 50 or 100%.

**For more information call:
410-742-4988, Ext. 106**

Feather and Fronds Competition

ENTRY FEES

\$50 First entry
\$35 Each additional entry

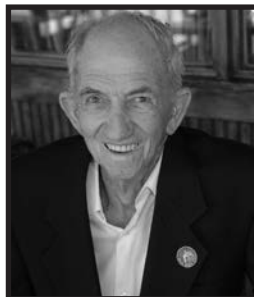
Division Feather

1. Use means and materials that would provide a lifelike feather, provided that the feather itself is made out of wood.
2. The quill, shaft and down can be painted to emulate the Feather you are representing.
3. PLEASE DO NOT BRING YOUR MODEL FEATHER.

Division Fronds

1. Major portion of entry must be made of Palm Frond.
2. The challenge is to portray the "essence of species" of your subject while retaining as much of the character of the palm frond as possible.

3. Palm Fronds will be judged on the table.
4. To obtain Palm Fronds for the upcoming competition, you may contact
 - Daniel Montano at dmontano1@hotmail.com
 - Chet Wilcox at 916-961-5400 or chetwilcox@sbcglobal.net



This portion of the competition is dedicated to the late Bob Sutton.

Awards			
Feather Division			
	FIRST	SECOND	THIRD
Best in Show	\$400 rosette	\$200 rosette	\$100 rosette
Fronds Division			
	FIRST	SECOND	THIRD
Best in Show	\$400 rosette	\$200 rosette	\$100 rosette

Fish Carving Competition

ENTRY FEES

Open
\$35 First entry
\$20 Each additional entry

Intermediate

\$25 First entry
\$10 Each additional entry

Novice

\$15 First entry
\$5 Each additional entry

Youth

No Entry Fee

2. NOVICE carvers will be permitted to enter carvings created from published patterns; however, entries created from study fish or classroom projects will not be permitted. While use of published patterns at the NOVICE level is permitted, originality continues to be strongly encouraged.
3. Carvers may enter at only one level—Open/Advanced, Intermediate or Novice. Carvers entering both Fish and Wildfowl competitions must enter at the same skill level.
4. Entries are to be made of wood in all Divisions. Other materials are permitted for habitat and structural purposes; however, they are to be hand formed with the exception of eyes.
5. Entries under glass may be permitted if the glass is removable by the carver for judging.
6. Name of artist should not be visible.

The Ward Foundation is in partnership with Breakthrough Magazine to host the Fish Carving Competition. Anyone entering the competition should follow this link: <http://breakthroughmagazine.com/pdf/WTCBroch2011low.pdf> pages 26 & 27 to view a complete set of Fish Competition Rules.

OPEN/ADVANCED, INTERMEDIATE & NOVICE

1. OPEN/ADVANCED and INTERMEDIATE entries must be original in design and concept. Work done directly from study fish, published patterns or as a classroom project will not be considered as original in design and concept. If after judging it is determined that this policy has been ignored, the award will be rescinded.

Awards			
OPEN/ADVANCED			
	FIRST	SECOND	THIRD
Lifesize	rosette \$175	rosette	rosette
Miniature	rosette \$125	rosette	rosette
Natural	rosette \$75	rosette	rosette
Freestyle	rosette \$75	rosette	rosette
INTERMEDIATE			
	FIRST	SECOND	THIRD
Lifesize	rosette \$125	rosette	rosette
Miniature	rosette \$75	rosette	rosette
Natural	rosette \$50	rosette	rosette
NOVICE			
	FIRST	SECOND	THIRD
Lifesize	rosette \$50	rosette	rosette
Miniature	rosette \$25	rosette	rosette
Natural	rosette \$25	rosette	rosette
YOUTH			
	FIRST	SECOND	THIRD
3 Categories	rosette	rosette	rosette

Best in Show will be selected from the winner of each of the two Open/Advanced Divisions. Second in Show will be selected from the remaining Division winners along with the Second of the Division previously selected. Third will be selected from the remaining First in Division winner plus the next runner up of the Division(s) previously selected. In other words, it is possible to select First, Second and Third in Show from one Division.

2018 Loan Agreement: World, CDC, GPC, CA, SD, SS, SWC and Youth Winners.

Entries winning first place will be on loan to the Ward Museum for a period of one year immediately following this competition. The carving(s) must be retrieved from the Ward Museum with prior arrangement by the owner at the time of next year's competition. A separate loan agreement for the first place winners will be completed and signed by both parties at the close of the competition.

Official Species Designations

DIVISIONS CD, SW AND GP—CONTEMPORARY DECOY, DECORATIVE SMOOTHIE WATERFOWL AND GUNNING PAIR

Marsh Ducks

Black Duck
Blue-winged Teal
Cinnamon Teal
Gadwall
Green-winged Teal
Mallard
Northern Pintail
Shoveler
Wigeon
Wood Duck
All Other

Diving Ducks

Bufflehead
Canvasback
Common Merganser
Eiders
Goldeneyes
Hooded Merganser
Long-tailed Duck
Red-breasted Merganser
Redhead
Ring-necked Duck
Ruddy Duck
Scaup
Scoters
All Other

Geese, Swan & Confidence

Brant
Coot
Geese
Grebe
Swan
Confidence and all others

DIVISION SS—SMOOTHIE SHOREBIRD & WADING BIRDS

1. Avocet, Oystercatchers, Stilt
2. Curlew, Whimbrel, Godwits
3. Dowitchers, Knots, Dunlins
4. Phalaropes, Woodcock, Snipe
5. Plovers
6. Yellowlegs, Red and Green Shank, Solitary Sandpiper
7. Small Sandpipers (under 9")
8. Large Sandpipers, Willets, Turnstones
9. Egrets, Herons
10. All Other Waders & Shorebirds

DIVISION SD—SHOREBIRD DECOY

1. Avocet, Oystercatcher, Stilt
2. Curlew, Whimbrel, Godwits
3. Plover
4. Yellowlegs/Willet
5. Peep
6. Turnstone, Dowitchers & Knots
7. Egrets & Heron

DIVISION E—DECORATIVE LIFESIZE FLOATING WATERFOWL

Marsh Ducks

Black Duck
Blue-winged Teal
Cinnamon Teal
Gadwall
Green-winged Teal
Mallard
Northern Pintail
Shoveler
Wigeon
Wood Duck
All other

Diving Ducks

Bufflehead
Canvasback
Common Merganser
Eiders
Goldeneyes
Hooded Merganser
Long-tailed Duck
Red-breasted Merganser
Redhead
Ring-necked Duck
Ruddy Duck
Scaup
Scoters
All other

Geese, Swan & Confidence

Brant
Canada Goose
All other Geese
Swan
Coot
Grebes
Loons
All Other

DIVISIONS F AND G—DECORATIVE LIFESIZE WILDFOWL / DECORATIVE MINIATURE WILDFOWL

Waterfowl

Ducks
Geese
Swans

Shorebirds & Wading Birds

Avocet
Coot
Cranes
Curlew
Egrets
Flamingo
Gallinules
Godwits
Hérons
Ibises
Knots
Limpkins
Oystercatchers
Phalaropes
Plovers
Rails
Sandpipers
Snipe
Spoonbill
Stilt
Stork
Turnstones
Whimbrel
Woodcock
Yellowlegs

Upland Game Birds

Grouse
Guineafowl
Partridge
Peafowl
Pheasant
Ptarmigan
Quail
Turkeys

Birds of Prey

Caracaras
Eagles
Falcons
Hawks
Kites
Ospreys
Owls
Vultures

Pelagic & Coastal Seabirds

Albatrosses
Anhingas
Auks
Boobies
Cormorants
Frigatebirds
Gannets
Grebes
Gulls
Jaegers
Loons
Pelicans
Penguins
Petrels
Puffins
Shearwaters
Skimmers
Skuas
Terns
Tropicbirds

Non-Passerine Land Birds

Anis
Barbets
Bee-eaters
Cuckoos
Doves
Goatsuckers
Hoopoes
Hornbills
Hummingbirds
Kingfishers
Parrots
Pigeons
Roadrunners, Swifts,
Toucans, Trogons
Woodpeckers
South American and Old World
Sub-Oscine Passerines

Songbirds A - Oscine Passerines

Birds of Paradise
Bluebirds
Bowerbirds
Catbirds
Chats
Chickadees
Creepers
Crows
Dippers
Flycatchers
Gnatcatchers
Jays
Kinglets

Larks
Magpies
Mockingbirds
Nuthatches
Pipits
Robins
Shrikes
Swallows
Thrashers
Thrushes
Titmice
Vireos
Wagtails, Warblers
Waxwings
Wrens

Songbirds B - Oscine Passerines

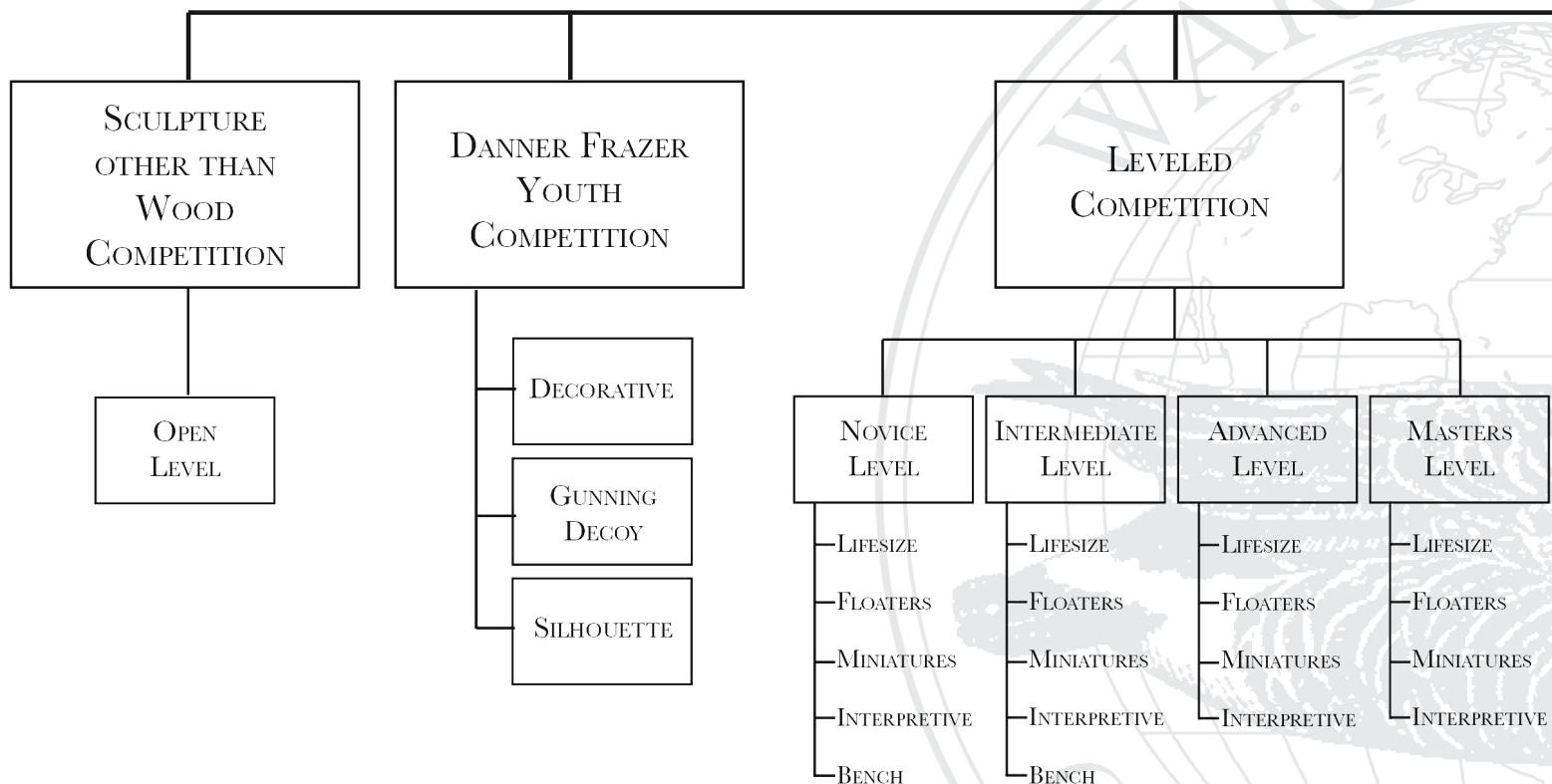
Blackbirds
Bobolinks
Buntings
Cardinals
Cowbirds
Crossbills
Finches
Grackles
Grosbeaks
Juncos
Meadowlarks
Orioles
Redpolls
Sparrows
Starlings
Tanagers
Towhees

Decorative Lifesize Fish/Decorative Miniature/Natural Finish Wood Sculpture/Freestyle

Freshwater Fish
Freshwater Game Fish
Miscellaneous Freshwater Fish
Saltwater Reef Fish
Offshore Game Fish
Coastal Game Fish
Miscellaneous Saltwater Fish

For a complete list of specific fish species specifications please visit <http://breakthroughmagazine.com/pdf/WTCBroch2011low.pdf>

WARD WORLD WIL



Live Benefit Art Auction

This is your chance to own a piece of art crafted by a world famous artist! Bid on items such as hand carved wildlife art, bronze sculptures and more.

Saturday, April 28, 2018 • 2 p.m.

Now accepting art for consignment. Art must fit specific criteria.

Single Gunners may be entered into the 2018 auction. Birds will be floated in tanks and awarded ribbons. Single Gunners will be judged Friday at 2:30 p.m. using Gunning Pairs Rules and Standards alongside of other Singles. Gunners will be awarded 1st, 2nd, and 3rd place ribbons. Ducks will then be submitted to the auction for purchase, more details to come. Enter for free and donate at 50 or 100%.

Call us today at 410-742-4988, ext. 120, or bring us your item(s) on Thursday, April 26, 2018, from 11 a.m. to 8 p.m.

Significant Changes or Clarifications for 2018

- The Fish Carving competition will be returning this year, please refer to page 13 for instructions and guidelines.
- Palm fronds and Feathers will remain in the 2018 competition.
- No artificial lighting will be used during judging, artificial lights (handheld or tabletop) are not permitted and will not be on the display.
- World Championship- Interpretive Wood Entry is to be made entirely of wood with the exception of structural elements. The base may be of other material and will be considered as part of the sculpture.
- Please note the addition of the non-floating category of the Champagne Waterfowl Division.

WATERFOWL COMPETITION

WORLD
CHAMPIONSHIP
COMPETITION

CHAMPION
LEVEL
WORLD
CLASS

- LIFESIZE
- WATERFOWL PAIRS
- MINIATURES
- INTERPRETIVE
- SHOOTIN' RIG

LEM & STEVE WARD
COMPETITION

HUNTING
DECOYS

DECORATIVE
SMOOTHIE

OPEN
LEVEL

CHAMPION
LEVEL

- CONTEMPORARY DECOYS
- GUNNING PAIRS
- CONTEMPORARY ANTIQUES
- SHOREBIRD DECOYS
- BENCH

OPEN
LEVEL

CHAMPION
LEVEL

- SMOOTHIE WATERFOWL
- SHOREBIRDS & WADING BIRDS
- CHAMPAGNE WATERFOWL
- SMOOTHIE WATERFOWL
- CHAMPAGNE WATERFOWL

**Sponsor
Opportunities
Available!**

Visit our website:
www.wardmuseum.org
for additional information.

Dr. John P. Trabuchi Memorial Award, Intermediate Decorative Lifesize Floating Waterfowl, Best Diver
William Schultz Memorial Award, Intermediate Decorative Lifesize Wildfowl, Best in Waterfowl Category
Richard "Dick" LeMaster Memorial Award, Intermediate Decorative Lifesize Floating Waterfowl, Best in Species Mallard Hen
Mike Wavercak Memorial Award, Intermediate Decorative Lifesize Floating Waterfowl, Best in Species Bufflehead
Robert "Bob" Guge Memorial Award, Novice Decorative Lifesize Wildfowl, Best Songbird

Accommodating Friends

Please support the hotels and motels that support us. **Identify yourself as an attendee of the 2018 Ward Wildfowl Carving Competition to ensure any special rates that may be available.** Early reservations are suggested. All rates shown are per night, based on availability and may not include applicable taxes.

Additional visitor information is available from:
Ocean City Public Relations
4001 Coastal Hwy., Ocean City, MD 21842
1-800-OC-OCEAN

Barefoot Mailman Motel

#16 35th St. Oceanside
Ocean City, MD 21842
www.barefootmailman.com
410-289-5343
800-395-3668
Mon-Thu Call for rates
Fri-Sat Call for rates

Best Western Ocean City Hotel & Suites

5501 Coastal Highway
Ocean City, MD 21842
www.bestwesternocsuites.com
443-664-4001
866-664-4004
Mon-Thu \$49.95
Fri-Sat \$84.95

Castle in the Sand Hotel

3701 Atlantic Avenue
Ocean City, MD 21842
www.castleinthesand.com
410-289-6846
800-552-7263
Mon-Thu Call for pricing
Fri-Sat Call for pricing

Cayman Suites Hotel

125th St.
Ocean City Maryland 21842
www.caymansuites.com
410-250-7600
800-546-0042
Mon-Thurs Call for rates
Fri-Sat Call for rates

Days Inn Oceanfront

23rd St. & Boardwalk
Ocean City, MD 21842
www.boardwalkhotels.com
410-289-9103
800-926-1122
Mon-Thu \$69
Fri-Sat \$99

Dunes Manor Hotel & Suites

2800 Baltimore Avenue
Ocean City, MD 21842
www.dunesmanor.com
410-289-1100
800-523-2888
Mon-Thu Call for rates
Fri-Sat Call for rates

- Standard oceanfront rooms (2 double beds)
- Handicap rooms

Dunes Court

2700 Baltimore Avenue
Ocean City, MD 21842
www.ocdunes.com
410-289-1100
800-523-2888
Mon-Thu Call for rates
Fri-Sat Call for rates

Fenwick Inn

13801 Coastal Highway
Ocean City, MD 21842
www.fenwickinn.com
410-250-1100
800-492-1873
Mon-Thu Call for rates
Fri-Sat Call for rates

Flamingo Motel

3100 N. Baltimore Ave.
Ocean City, MD 21842
www.theflamingomotel.com
410-289-6464
800-394-7465
Mon-Thu \$44
Fri-Sat \$69

Grand Hotel & Spa

2100 Baltimore Avenue
Ocean City, MD 21842
www.grandhoteloceancity.com
410-289-6191
800-447-6779
Mon-Thurs \$84
(\$69 before April 3)
Fri-Sat \$169
(\$109 before April 3)

Quality Inn Suites Beachfront

Oceanfront & 33rd Street
Ocean City MD 21842
410-289-1234
Mon-Thu Call for rates
Fri-Sat Call for rates

Hilton Suites

3200 N. Baltimore Ave.
Ocean City, MD 21842
www.ocmdhotels.com
410-289-6444
866-729-3200
Mon-Thu \$119
Fri-Sat \$199

Holiday Inn Oceanfront

67th St. & the Ocean
Ocean City, MD 21842
www.ocmdhotels.com
410-524-1600
800-638-2106
Mon-Thu \$64
Fri-Sat \$134

Paradise Plaza Inn

39th St. & Boardwalk
Ocean City, MD 21842
410-289-6381
Mon-Thu \$121.95
Fri-Sun \$155

Princess Bayside Beach Hotel

48th St. & Coastal Highway
Ocean City, MD 21842
www.princessbayside.com
410-723-2900
800-854-9785
Mon-Thu \$59 Standard
\$79 Efficiency
Fri-Sat \$79 Standard
\$109 Efficiency

Quality Inn Oceanfront

54th St. & the Ocean
Ocean City, MD 21842
www.ocmdhotels.com
410-524-7200
800-837-3586
Mon-Thu \$74
Fri-Sat \$129

Sea Bay Hotel

6007 Coastal Highway
Ocean City, MD 21842
www.seabayhotel.com
410-524-6100
800-888-2229
Mon-Thu \$49.95
Fri-Sat \$69.95

Spinnaker Motel

18th St. & Baltimore Ave.
Ocean City, MD 21842
www.ocmotels.com
410-289-5444
800-638-3244
Mon-Thu Call for rates
Fri-Sat Call for rates

Special Thanks

The Ward Foundation gratefully acknowledges the support of the hotels and motels who have generously donated rooms for the World Championship Judges.

Mail-in Entries for Lem & Steve and Youth Competitions

CUSTOM LAWS MAKE IT COST PROHIBITIVE FOR INTERNATIONAL ARTISTS TO MAIL ENTRIES TO THE U.S.; THEREFORE, WE CAN ONLY ACCEPT ENTRIES MAILED FROM WITHIN THE U.S. THE WARD FOUNDATION IS NOT RESPONSIBLE FOR ANY LOSS OR DAMAGE TO MAIL-IN ENTRIES.

Mail to: Ward Museum, Attn: Events Department,
909 S. Schumaker Dr., Salisbury, MD 21804

Deadline: Must be received by April 20, 2018.

- Entrants must pre-pay with credit card, check or money order:
 - Shipping, including a pre-paid, return-postage, shipping label with insurance. Record tracking numbers for your own records.
 - \$5 handling fee per box** (not per entry). Fee not required for youth entries.
 - Entry fees, including membership or \$10 non-membership fee.
- Entrants must complete registration form(s).
 - You may download a sample form from www.wardmuseum.org or call 410-742-4988, ext. 114.

- The sample form is not an official registration form.** Your entry will be registered by the competition registrar.
 - Complete the sample form ensuring all information, including entry fees, is correct.
 - Enclose payment with the correct totals. Carvings mailed without full payment will not be entered.
 - You must sign the sample form to authorize registration of your entries and compliance with all rules, guidelines and waivers.
 - Make a copy of your filled-out, sample registration form for your own records.
 - In an envelope, enclose the completed registration form(s) as well as your payment and return postage label. Put the envelope in the shipping box with your carving(s).
- Carvings will be shipped to the owners no later than two weeks after the competition. Arrival times will vary depending on your distance from Salisbury, MD.
 - If you or your agent will be picking up your carving at the show closing (Sunday, April 30, 4 p.m.), please provide

instructions along with your sample registration form.

- Packing Recommendations:** The following is based on recommendations of USPS, UPS and Federal Express to ensure the utmost safety for your carvings.
 - Use a rigid corrugated box large enough for carving(s) and cushioning materials.
 - Wrap each carving separately using proper cushioning material such as bubble wrap.
 - Each carving should be surrounded by at least two inches of cushioning and be placed at least two inches from inside wall of box. Use peanuts or foam for loose fill to avoid shifting.
 - Enclose envelope with sample form, fee payments, and return postage label.
 - Seal box securely with packing tape.
- To mail in box. UNDER NO CIRCUMSTANCE WILL PIECES THAT ARE NOT LEM AND STEVE OR YOUTH BE ACCEPTED.**

Billie's Catering

Weddings, Banquets, Reunions, Corporate Events
Office Meetings, BBQ'S, Outdoor Concessions

410 968 0333 -billie968@aol.com

Fax 410 968 0336 Crisfield, MD

Ward Museum corporate sponsor. Events catered at the Ward Museum will include utensils, dishes and glassware,

Since 1968,

Knotts Knives have been the standard in high-quality carving tools and supplies.

To serve our customers better, we have recently expanded the family business to include a wide variety of new products, all of which can be seen and ordered via our new website, knottsknives.com.

From paints to aprons to decoy eyes, Knotts Knives is the essential resource for woodcarving enthusiasts.



SEND \$2 FOR OUR CATALOG (refundable on your first order)

Dust Demon®

Lightweight, Portable
Dust Collection System

- Adjusts from 2' to 6' in height
- Adjusts to any angle
- Dismantles in seconds
- Filters 4 cubic feet of air per second
- Whisper quiet
- Lightweight (8 lbs.)
- Fits into a 10" x 7" x 21" space
- 265 CFM

\$265.00
+ \$22. S&H

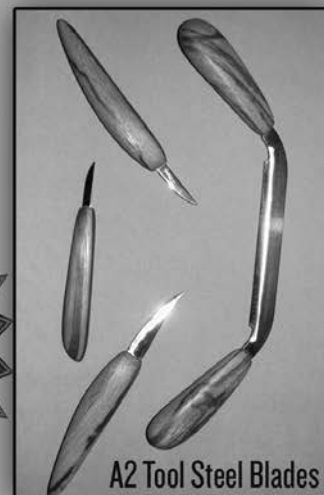


NEW,
IMPROVED
DUST BAG!



www.knottsknives.com
800-388-6759 410-546-1635
5549 Spinnaker Drive, Salisbury, MD 21801

New from Knotts Knives



A2 Tool Steel Blades

After conventional hardening, these blades receive deep cryogenics by one of America's premier metal treating companies. This super-cold process provides superior edge retention over conventional hardening. Our A2 blades will remain sharper longer than any traditional carving blades. Handles are marblewood. Pictured are the A2 #1 (5") drawknife, A2 #S2, A2 #S3 and the A2 #4A. Other shapes are available. Call or e-mail for availability.

COASTING

Ocean City, Maryland

QUALITY INN OCEANFRONT Oceanfront & 54th St.
www.qioceanfront.com / 800-837-3586

Atriumview efficiencies with private balconies offering a view of the inviting 5-story Atrium that encloses tropical landscaping, exotic birds, a small koi fish pond, an indoor pool, jacuzzies and the Atrium Cafe & Bar. Children's indoor and outdoor play areas. Complimentary Wi-Fi.

HOLIDAY INN OCEANFRONT Oceanfront & 67th St.
www.holidayinnoceanfront.com / 800-837-3588

Fully-equipped efficiency units with private balconies, indoor pool, hot tub, fitness room and the award-winning Touch of Italy restaurant. Free Wi-Fi.

FLAGSHIP OCEANFRONT HOTEL Boardwalk & 26th St.
www.flagshipoceanfront.com / 800-837-3585

Indoor pool, hot tub, fitness room, game room, outdoor courtyard with children's play area, shuffleboard courts and picnic areas. Free Wi-Fi.

HILTON OCEAN CITY OCEANFRONT SUITES Oceanfront & 32nd St.
www.oceancityhilton.com / 866-729-3200

The only AAA 4-Diamond property in Ocean City features oversized suites with a living room, a bedroom and bathroom with a large jacuzzi tub, galley kitchen, private balcony, two 42" HDTVs w/DVD players and complimentary Wi-Fi. Indoor and outdoor pools. Fine dining and lounge.

HOLIDAY INN HOTEL & SUITES Boardwalk & 17th St.
www.ocsuites.com / 866-627-8483

This resort hotel features oversized suites with a living room, a bedroom and bathroom with a large jacuzzi tub, galley kitchen, private balcony, two 42" HDTVs w/DVD players and complimentary Wi-Fi. Indoor and outdoor pools. Fine dining and lounge.

Visit WWW.OCMDHOTELS.COM to discover more hotels



Jaymes
COMPANY

Specializing in Woodcarving
Tools and Supplies

Find us on the Web!
www.jaymescompany.com

More Than
3,500 Items
in Stock

Or Call Toll Free
(888) 638-8998

234 Cartland Way
Forest Hill, MD 21050

*Where Service and
Knowledge Make
a Difference!*

Supplying Carvers for 35 Years

flamingo
MOTEL



3 Buildings – Oceanside at 31st St.
3100 Baltimore Ave., Ocean City, Maryland 21842

HEATED INDOOR POOL
Suites
Kitchenettes
Rooms

**all units have a microwave
and small fridge, free wifi
and flat screen tv's.**

Toll Free
1-800-394-PINK (7465)

\$44 - Weekdays prior to event
\$69 - Fri., Sat. and Sun.

Book Online: theFlamingoMotel.com



CRISFIELD KAYAK

65 Richardson Ave # C,
Crisfield, MD 21817

Phone: (410) 968-0333

*Delivery available in
Somerset County*

*Affordable rentals rates,
Delivery to all beautiful location
in Somerset County.
Bag lunch available.*

Castle IN THE Sand

HOTEL

SUITES • EFFICIENCIES • CONDOS • ROOMS • COTTAGES

- Coconuts Beach Bar & Grill
- Beach House Restaurant
- Take A Dip Ice Cream Shop
- Olympic Pool & Diving Board
- Beach Equipment Rentals
- Free Children's Activities
- Free Wireless Internet
- Wait Service on the Beach
- Live Music on Coconuts Patio
- Beach Volleyball Court
- Meeting Room
- Senior Citizen Rates
- Hot Deals & Discount Rates



Come stay in our Castle by the sea...
...Where we treat you like Royalty!



Oceanfront at 37th Street
410/289-6846 • 800/552-SAND

www.castleinthesand.com

AVES®

Manufacturers of Fine Clay & Maches

P.O. Box 344 - RIVER FALLS, WI 54022
715-386-9097

Amazing results... every time.



Lord of the Forest
By, Jamie Brick
Created from wood,
white cedar roots and
Apoxie® Sculpt

Use Aves products for sculpting, customizing and fabricating; fill cracks & seams. Create scenic effects, bases, & eye sets. Aves products are safe and easy to use. They offer 0% shrinking/cracking, superior detail & handling features. Self-hardens to a strong, durable, waterproof finish that can be tooled before & after setup: carve, sand, tap, drill & more! Accepts paints and stains. Adheres to wood, glass, metal, ceramic, foam, fiberglass & more!

Fast, convenient, worldwide shipping!
Contact us for a supplier near you!

1-800-261-2837

WWW.AVESSTUDIO.COM

Curt's Waterfowl Corner



...where personal attention makes every carver feel like a champion!



Complete Line of Quality Art & Carving Supplies

The Best Tupelo Gum!

Air dried and cut to order! Also, song and shore-bird sizes and cut outs, your patterns or ours!

WE TAKE PRIDE IN THE SELECTION & CUTTING OF YOUR WOOD

We at Curt's are glad to announce that we will again be selling our Tupelo Wood from our trailer parked outside of the main entrance of the Convention Center - Driving up with a batch of wood for this event - A super show for all - Tell your friends about us.

The Fabre & Robichaux families...

4033 Country Dr. • Bourg, LA 70343
985-580-3014 • Fax 985-851-2328
Toll Free 800-523-8474 (orders)
Curtis J. Fabre, Proprietor

Dux' Dekes Decoy Company



Since 1987, producing the finest carving blanks on the market today. Ducks, geese, loons, shorebirds, songbirds, raptors, upland game, wading birds and gunners. We are now offering tupelo in our Premier blanks, along with select shorebirds, upland gamebirds, songbirds and raptors. You'll not find a wider, more diverse, high quality selection of blanks anywhere.



800-553-4725
www.duxdekes.com



1356 North Rd.
Greenwich, New York, 12834

Are you Looking For Low Prices With Fast Service?

No Need For Rocket Science To Figure This One Out.



MDI Woodcarvers Supply

PO Box 4, Pittsfield, Maine 04967

For Free Printed Catalog Call
800-866-5728

Order online at mdiwoodcarvers.com

Wildfowl Carving

MAGAZINE

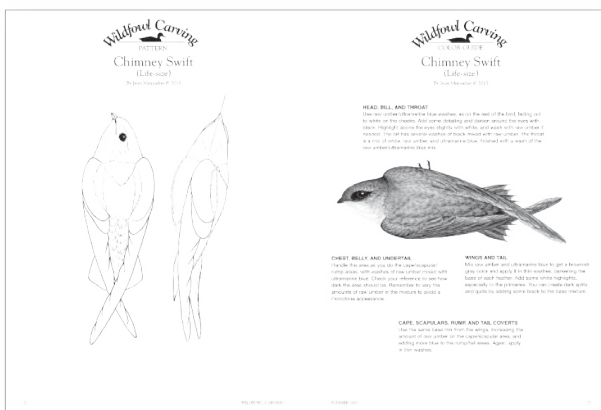
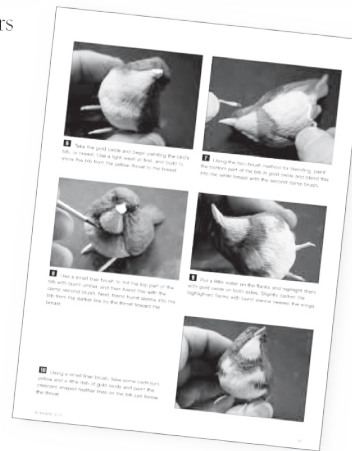
The Ultimate Resource for Wildfowl Carvers!



Decoys, songbirds, raptors—WILDFOWL CARVING MAGAZINE covers them all. Don't miss the opportunity to subscribe to the first and only magazine devoted exclusively to bird carving.

Here's just a sampling of the information you'll get in every issue:

- The latest techniques from the world's top carvers
- In-depth reference material
- Exclusive patterns
- Detailed painting instructions



Published four times a year, WILDFOWL CARVING MAGAZINE is the leading resource for artists in the field of wildfowl carving. Each information-packed issue provide you with start-to-finish projects, detailed photographs, and informative articles on topics that wildfowl carvers need to know. Because we always strive to push wildfowl carving to new heights, we just keep getting better.

DON'T MISS THIS OPPORTUNITY TO SUBSCRIBE TO THE BEST MAGAZINE OF ITS KIND! SUBSCRIBE TODAY: ONLY \$37.95 US and Canada*.

Order online today at www.wildfowl-carving.com or by calling, toll free, (877) 762-8034. Canadian customers, call (866) 375-7257. Mention code WWSFL16.

Money-Back Guarantee: If you are not 100% satisfied with WILDFOWL CARVING MAGAZINE— at any time or for any reason—we will send you a full refund for all unmailed issues.

*Canadian subscribers please add \$4.00 shipping and handling plus applicable taxes.

WWSFL16

Visit the Ward Museum

Celebrating 50 years



*See the largest public
collection of wildfowl art!*

Be Involved as a COMPETITION VOLUNTEER

If you understand species of wildfowl or simply want to feel the excitement of the competition, join us as a volunteer. We have over 40 positions available—from set-up to seminars to every facet on the competition floor to final break-down. This is a wonderful opportunity to contribute, learn and have fun!

JOIN US!



**For more information call:
410-742-4988, Ext. 109**



Art A La Carte

Joyce C. Gagen

*Artist • Watercolorist
nature • landscapes • seascapes*

6 Cragmoor Drive
Shamong, NJ 08088

joycegagen.com
jgagen3@comcast.net
joycegagen@aol.com

609-268-1926
fax 609-268-8458

Krausman's Wildlife Reference Photos & Woodcarving Studio

*Pamyla L. Krausman
James M. Krausman*

1750 S. County Rd. 557
Gwinn, Michigan 49841
Toll Free 1-877-572-8762
www.referencephotos.com



A PROUD SUPPORTER OF ARTS ON THE SHORE

For more information on cultural events,
visit www.salisbury.edu

Salisbury
UNIVERSITY

A Maryland University of National Distinction



Guyette & Deeter, Inc.

Leaders in the Decoy Auction Field Since 1984

**Four Decoy Auctions Per Year
With Guaranteed Color Catalogs**

February
Charleston, SC
At Southeastern
Wildlife Expo

April
St. Charles, IL
At Midwest Decoy
Show

July
Portsmouth, NH
At Sheraton
Harborside Hotel

November
Easton, MD
At Easton Waterfowl
Festival

Free Decoy Appraisals Mail or Email profile photograph
decoys@guyetteanddeeter.com | www.guyetteanddeeter.com
P.O.Box 1170, Saint Michaels, Maryland 21663 | 410-745-0485

*Friends of
Lem
& Steve*



Our Goal: \$50,000.

*I/We wish to support the Ward Workshop Restoration
with a tax deductible gift:*

Name _____
Address _____
City _____ State _____ Zip _____
Telephone _____ Email _____

Giving Levels:

- _____ Benefactor.....\$1,000.
- _____ Sponsor.....\$500.
- _____ Investor.....\$250.
- _____ Friend.....up to \$250.

This Gift Is:

In Memory of _____
In Honor of _____

Please send your donation to:
Crisfield Heritage Foundation
P.O. Box 253

Crisfield, Md. 21817

CHF is a 501C (3) organization tax ID # 52-1122897

SPONSORED BY:

CRISFIELD HERITAGE FOUNDATION



www.crisfieldheritagefoundation.org Curator, Tim Howard
410-968-2501



“Lasting
Legacy” ...



Being original never gets old ... but does require some delicate repairs. Workshop restoration projects include a new roof, all new windows and doors, repair/replace siding, painting, and handicap ramp/deck repair. Please join the “Friends of Steve and Lem” and help maintain their “lasting legacy” for future generations of Ward Brothers enthusiasts.

[Project of the Crisfield Heritage Foundation]

Contact us at : 410-968-2501
crisfieldheritagefoundation.org



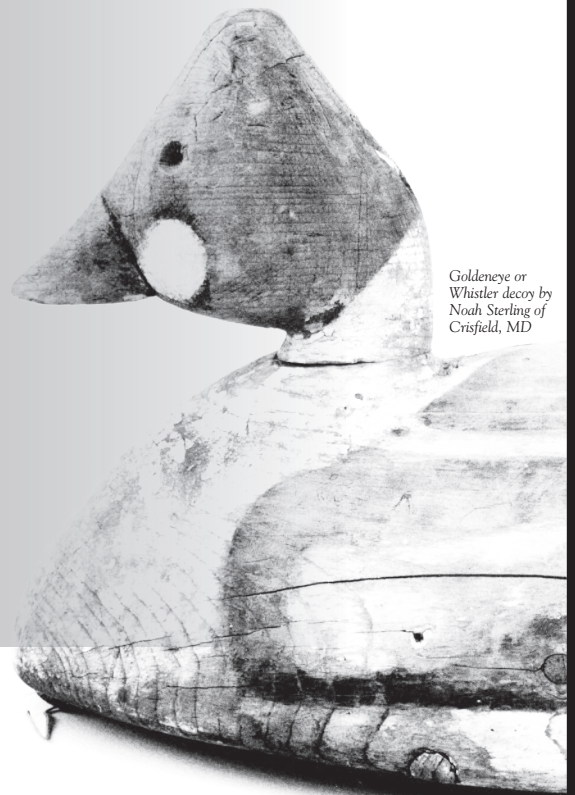
The Ward Museum of Wildfowl Art's CHESAPEAKE

Wildfowl Expo

Saturday, October 14, 2017

Free Admission to Museum

- Admission to Event & Museum Galleries Is Free
- Buy, Sell & Trade — Waterfowling Collectibles
- Free Decoy Appraisals
- Antique Decoy Competition
- Chesapeake Challenge
- Carving Demonstrations
- Children Arts & Crafts
- Food Vendors
- LaMay Gallery — Bottoms Up: The Underside of Decoys
- Welcome Gallery — Retrievers: The Hunters Best Friend
- Friday, October 13, 3-6 p.m. — Exhibitor Preview and Reception



*Goldeneye or
Whistler decoy by
Noah Sterling of
Crisfield, MD*






Ward Museum of Wildfowl Art
909 S. Schumaker Drive • Salisbury, Maryland
410-742-4988, ext. 120

www.wardmuseum.org

This event is sponsored in part by:
Chincoteague Decoy Carvers' and Artists' Association, Friends of George Root, Knots Knives, Rich Smoker, Harry Jackson Family, Bennett Scott, Ed Rogan, Refuge Inn, Chesapeake Utilities, Maryland State Arts Council, National Endowment for the Arts, Salisbury University and Salisbury Wicomico Arts Council.

SU is an Equal Opportunity/AA/Title IX university and provides reasonable accommodation given sufficient notice to the University office or staff sponsoring the event or program.



Treetops

Gifts of Art and Nature
at the Ward Museum, Salisbury University



Local Artisans • Unique Gifts • Home Decor

Get your Ward Museum logo merchandise and a variety of local candies, nuts, honey & popcorn!

Need more info?

Call 410-742-4988 ext. 120

Email: wardstore@salisbury.edu

Check out items on our website: treetopsgifts.com

Open daily:

Monday-Saturday 10 am-5 pm

Sunday Noon- 5 pm



Ward Museum members receive 10%
discount year-round.





Home of the 2018 Living Legends Dinner

Book by April 3rd
for
Special Event Rates
Weekdays: \$69.00
Weekend: \$109.00



Grand Hotel and Spa

2100 Baltimore Ave. Ocean City MD 21842

410-289-6191 | www.grandhoteloceancity.com

For Reservations call 1-800-447-6779 | Group Code: WARD18

**All rates are based on single/double occupancy and are exclusive of 10.5% tax*

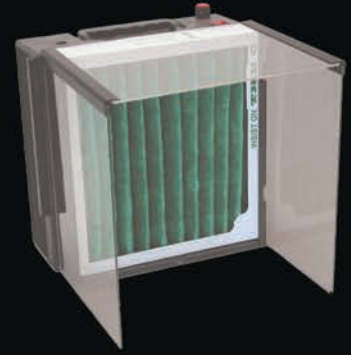
Razertip®

...Powered to Fire Your Imagination...

Fine Pyrographic Tools & Portable Dust Collectors

Razertip® Pyrographic Tools:

- Preferred by some of the world's finest pyrographers
- World's finest, sharpest, most innovative burners
- Exceptional temperature control for delicate detail
- 10 Amp output for superb tip heat recovery
- Over 800 different tip profiles available
- Fixed-tip or interchangeable-tip pens and tips
- Unconditional warranties:
 - 3 year power supply
 - 1 year unconditional pen warranty includes fixed tips
 - 6 month warranty on re-tips
- World's only hot-wire burning tool safety certified to:
 - CSA C/US (North America) • C-Tick (Australia) • CE (Europe)
- Choose from regular or heavy-duty pens and cords
- Adapters and cords available to fit most other brands
- Systems starting at \$156.95
- Dealers world-wide



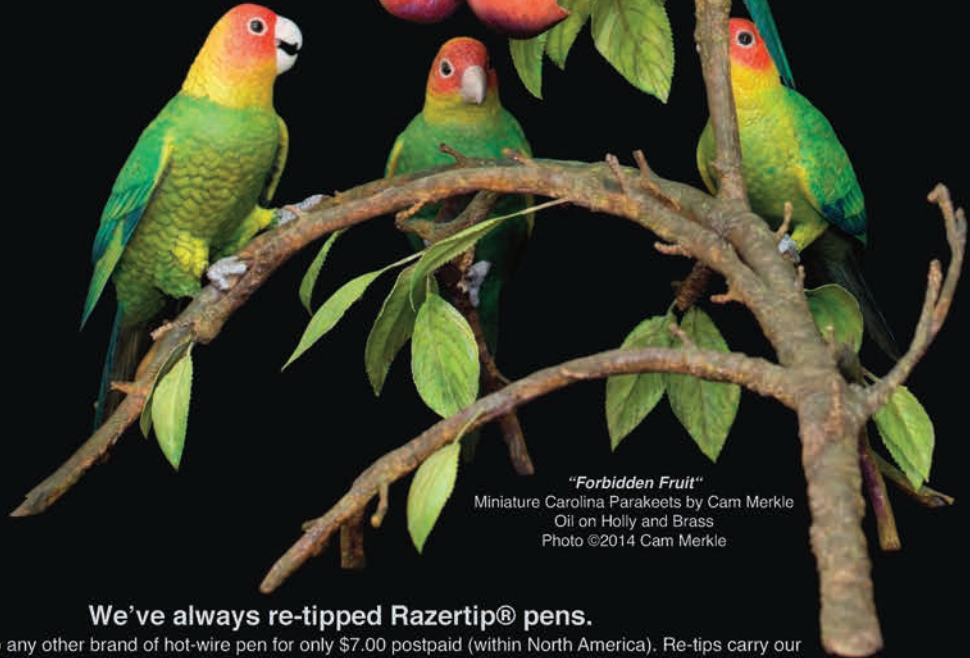
Razera™ 530 Dust Collector:

- Smallest, lightest, quietest, only 11"x11"x6" and under 8lbs.
- Super portable - takes up less than one sq. foot on your workbench!
- Easy-in, easy-out, easy-clean filters.
- Variable-speed German-made impeller fan.
- Includes fold-down 8" hood.
- Add extra filter stages, a tool hanger, 4" hose adapter, or add a lap tray
- Built-in carry handle.
- Built-in lamp holder holds a standard swing-arm lamp
- Safety certified to CSA C/US standards
 - Unconditional warranty - 5 years on fan & 10 years on cabinet & electronics
 - Built to last a lifetime
 - \$399.00



Try our unique Feather Former™ Tips & Pens!

Imagine burning feathers and barbs in seconds. Excellent for multiple lines and textures. Create fully formed feathers fast and easy, burning from 40 lines per inch to 250 lines per inch!



"Forbidden Fruit"
Miniature Carolina Parakeets by Cam Merkle
Oil on Holly and Brass
Photo ©2014 Cam Merkle

We've always re-tipped Razertip® pens.

We can also re-tip any other brand of hot-wire pen for only \$7.00 postpaid (within North America). Re-tips carry our exclusive 6 month unconditional warranty - that's better than most new pen warranties! Call or email us for details.

Razertip Industries Inc.

- PO Box 910, 301- 9th Street North, Martensville, SK Canada S0K 2T0
- Phone (306)931-0889 • Fax (306)242-6119 • Toll-free order line 1-877-729-3787
- Email: info@razertip.com
- More information & free catalogue at www.razertip.com

