

The Ward Museum of Wildfowl Art, Salisbury University presents

50th

Roland E. Powell
Convention Center

**OCEAN CITY
MARYLAND**

WARD WORLD CHAMPIONSHIP

WILDFOWL CARVING COMPETITION AND ART FESTIVAL

April 21-23, 2023

Rich Smoker Heritage Award Best in World, World Single Gunner Brant by Tom Matus of Kuna, ID



410-742-4988



wardmuseum.org





**SAVE
\$20**



Limited-Time Offer!

Save 50% Off *Wildfowl Carving Magazine*

- Four collectible issues per year with the latest bird carving updates, articles, and ideas.
- Step-by-step carving demonstrations, so you can see clearly how to transform a block of wood into a lifelike bird.
- Patterns to bring to your workbench
- Painting tutorials and color guides to help you bring your carving to life.
- Expert tips, tricks, and techniques for beginner and experienced carvers alike.
- Projects for both decoratives and decoys
- Habitat inspiration, carver profiles, and reference articles
- Inspiration for loons, owls, ducks, raptors, songbirds, and many more birds!
- And much more!

Subscribe today and

SAVE 50% off your one-year introductory subscription!



(877) 762-8034 (U.S.)
(866) 375-7257 (Canada)



www.wildfowl-carving.com/WARD50



Give the operator
promo code: **WARD50**

WELCOME

Dear friends,

I am pleased to present the 2023 Ward World Championship Carving Competition guide.

Our long-awaited return to the in-person competition is finally upon us! Our staff and volunteers are eager for this homecoming, as we are sure you are too. We can't wait to see old faces and new as we enter this year's competition.

Things may look a little different this year. Our "new" space in the renovated AB hall of the OC Convention Center will bring everything back together in one room. The competition, auction, and awards ceremony, together again in a single space, as the competition was in its early years.

We hope you enjoy the array of classes, workshops, and seminars we have lined up. We look forward to (finally!) celebrating our 2020-21 and 2022-23 Living Legends with you at the Grand Hotel. And we can't wait to see all the amazing pieces you have been working on. It is going to be an event to remember.

We want to thank each and every one of you for your continued support, through thick and thin. Without you, this competition and the Ward Foundation would not be what it is. Your contributions allow us to bring this event year after year, and it cannot be overstated how important your financial support is to the longevity and vitality of the competition.

With that being said, we hope you will consider contributing to the longevity of the competition by donating to the benefit auction, sponsoring a category, sharing your time as a volunteer, or simply becoming a member of the Ward Foundation. Registration and admissions do not keep this competition afloat. It's the generous donations of our amazing community that make it happen.

So bring your A-game, and we will see you in April!

Cheers,



Brittany Andrew
Interim Executive Director



Roland E. Powell Convention Center
4001 Coastal Highway, Ocean City, Maryland 21842

SHOW HOURS

- Friday, April 21 10 a.m.-5 p.m.
- Saturday, April 22 9 a.m.-5 p.m.
- Award Ceremony 5:30 p.m.
- Sunday, April 23 10 a.m.-4 p.m.

ADMISSION

- Multi-Day Pass \$10
- Seniors and Students \$8
- Children 12 and Under Free
(if accompanied by an adult)

ENTRY FEES

**ALL NON-MEMBERS WILL BE CHARGED
A \$10 ADMINISTRATION FEE AT REGISTRATION**

- World Championship A, B, C, D, SR \$150 each division
- Masters Class \$100 first entry
\$50 each add'l
- Advanced \$60 first entry
\$35 each add'l
- Intermediate \$35 first entry
\$15 each add'l
- Novice \$20 first entry
\$10 each add'l
- Lem & Steve Ward Divisions \$35 first entry
\$15 each add'l
- Youth Paid for by Gary
and Pam Stenger
- Sculpture \$75 first entry
\$35 each add'l
- Feathers and Fronds \$50 first entry
\$20 each add'l
- Open \$50 first entry
\$20 each add'l
- Fish
Champagne \$35 first entry
\$15 each add'l
- Open \$35 first entry
\$20 each add'l
- Intermediate \$20 first entry
\$10 each add'l
- Novice \$15 first entry
\$5 each add'l
- Youth No Entry Fee
- Antique Birds No Entry Fee

For rules & information: 410-742-4988, ext. 106
For classes & seminars: 410-742-4988, ext. 110
Visit our website at www.wardmuseum.org

TABLE OF CONTENTS

WELCOME.....	2
TIPS FROM JUDGES	3
2023 ADULT & YOUTH EDUCATION CONFERENCE	4
WARD FOUNDATION LIVING LEGEND	5
REGISTRATION.....	10
SCHEDULE	10
2023 WORLD COMPETITION RULES.....	11
WORLD CHAMPIONSHIP COMPETITION.....	12
LEVELED COMPETITION	13
A. DANNER FRAZER YOUTH COMPETITION	15
SPECIAL COMPETITION.....	15
LEM & STEVE WARD COMPETITION.....	17
SPECIAL COMPETITION.....	19
OPEN	20
OFFICIAL SPECIES DESIGNATIONS	21
WARD WORLD WILDFOWL COMPETITION DIAGRAM	22
ACCOMMODATING FRIENDS.....	23

COMPETITION COMMITTEE

Jack Cox, Del Herbert, Tom Horn, Arthur Leonard
(Board Liaison), Pam Morris, Bennett Scott,
Rich Smoker

FUNDED IN PART BY



Make Tomorrow Yours

Cover photo: Best in World, Rich Smoker Heritage Award, World Single Gunner
Brant by Tom Matus of Kuno, ID

SU is an Equal Opportunity/AA/Title IX university and provides reasonable accommodation given sufficient notice to the University office or staff sponsoring the event or program. For more information regarding SU's policies and procedures, please visit www.salisbury.edu/equity.

TIPS FROM JUDGES

Tip number one: When bribing a judge, use high quality tape to secure the folded bills to the bottom of the bird. — All joking aside, (Thank you Pete Palumbo for this gem and thank you to all the judges that took the time to send in tips!) here are some tips from the judges:

- Keep a journal of special sightings, take your own photos. Spend time in nature.
- Create a carving that projects well and reflect a bird's essence of specie. Surround yourself with reference material.
- Never create a new species, even in Interpretive. Gather as much resource material as you can. Stick to originality.
- When entering a Carving Competition, remember to enjoy the process from start to finish. When at the shows take time to view other carvings. Make notes at what grabs your attention. Never try and copy someone else's work.
- Never try and impress the judges, it won't matter as there are guidelines and criteria which are followed. If judges can't come to an agreement, they will call in another.
- When having a piece with bird and prey, please make sure that you pay close attention to how each subject is interacting with the other. I have noticed many spectacular pieces where the bird of prey seems to be not looking at its prey. Also, pay special attention to how the pieces line up to each other. The use of a piece of string can be very helpful.
- The best advice I can offer is that accurate color and anatomy are critical to success in competition. Taking the time to collect and study good reference materials will help assure that you have your colors and anatomy correct. When you are in the tank or on the bay with other competitors, an off-color bird or one with poor anatomy will be very obvious to the judges as they compare the entries to select the best ones.
- Learn how to sand properly before attempting to paint. It makes all the difference.
- Make sure to sand, sand and sand. No flat spots or areas that are not sanded enough. A clean finish will create a great surface for painting.
- Experiment with finishes, save a piece of wood that you are using so you can.
- To convey emotion in the face and eyes will always get my attention.
- "The eyes have it" as they say. I always naturally look at the eyes. Proper eye placement is one of the most challenging areas of the carving and eyes that are not correctly set will throw off the carving.

World's Judge by Robert Kerr



- Bill angle is another thing to work on. A droopy will cause the whole carving to look awkward. Eye and bill angle go hand in hand.
- Maintain color harmony and feather proportion that reflects the field marking of selected species.
- Each species has its own Characteristics that should be executed. From a simple silhouette working through anatomy, to its finish, whether painted or stained.
- Painting a feather pattern differently from one side to another i.e., showing more tertials on one side or dropping a wing slightly as found in true life.
- Expressing gesture through movement is so important.
- There's several items you can control when making floating decoy. Floatation is one of and an important one. So take a little time and float your decoys properly.
- Within the Interpretive category, line, form and

movement are a must. If you have an idea and it only makes sense to you, follow through. Art is subjective. Some viewer might love your carving, others won't understand it. It does not matter. It is your creation.

- My tip for interpretive carvers is to remember that it's called Interpretive Wood Sculpture. For me the key word is sculpture. Educate yourself by studying classic sculpture. Understanding how lines, negative and positive space and all the technical elements work in bronze, ceramic, stone and wood sculpture that has been done for the last few thousand years can help you make your sculpture better. As a judge, I try to look at each piece as if it was a bronze sculpture. If it would make a strong bronze it is likely a strong sculpture.
- At the end of the show it is not about the ribbons you may or may not have received, you will leave with awesome memories made and lifelong friendships.

2023 ADULT & YOUTH EDUCATION CONFERENCE

Featuring Larry Barth, Jett Brunet, Peter Palumbo, Laurie and Mike Truehart, Rich and Ross Smoker, Al Jordan, Pat Godin, and more!
Register online at www.wardmuseum.org

SPECIAL EDUCATION CONFERENCE PASS

(Available online only)

\$27 Member; \$30 Non-member

Enjoy access to ALL signature lectures and one technique workshop. You may pick your workshop when you arrive at the Ward World Championship and pick up your conference pass at the Education table in the lobby.

SIGNATURE LECTURES

FRIDAY-SUNDAY, APRIL 21-23

\$3 Member; \$4 Non-member

Signature lectures featuring leading carvers and artists, presented at the Roland E. Powell Convention Center. Attending a lecture is a great way to enhance your visit to the Ward World Championship. Learn techniques to create award-winning carvings and other sculptures and paintings, from champion and professional carvers. Youth ages 17 and under receive **FREE** admission to lectures. Please watch our website for updates.

TECHNIQUE WORKSHOPS

FRIDAY-SUNDAY, APRIL 21-23

\$22 Member; \$25 Non-member

Attending a workshop is a great way to build skills and learn new techniques. Alternatively, a workshop can be a chance to learn about a completely new style or division. Workshops can last up to two hours and are an excellent way to get up close and personal with carvers and artists in fascinating areas of wildfowl art and sculpture. Designed with all audiences in mind — visitors, competitors and judges — workshops cover a wide range of topics, from novice to advanced techniques. Please watch our website for updates.

KIDS CORNER

FRIDAY-SATURDAY, 10 A.M.-5 P.M.
SUNDAY, 10 A.M.-4 P.M.

Children of all ages can enjoy the Kids Corner. Plan a visit to the Kids Corner for arts and crafts designed to stimulate curiosity and participation in the arts. Enjoy activities such as soap carving, painting and more!

CLASSES

TUESDAY-SUNDAY, APRIL 18-23

Learn to create award-winning carvings with World

Champion and professional carvers at the 2023 Education Conference. Enjoy a variety of one-, two- and three-day classes offered by the Ward Museum's Education Department in conjunction with the Ward World Championship. Classes occur prior to the competition in various locations throughout Ocean City, MD, starting Tuesday, April 18, and continuing through Sunday, April 23. Here is a preview of the exciting offerings that will be available during the conference. Watch our website for updates.

3-DAY CLASSES:

TUESDAY-THURSDAY, APRIL 18-20

Rich & Ross Smoker: Carve and Paint a Ward Bros.

Goose: Beginner through advanced, micro-motor or hand tool carving. Join Rich and Ross Smoker to carve and paint a replica of a Ward Brothers Canada Goose decoy. Using many different methods and techniques, including painting with oils, we will endeavor to replicate feathers painted by the masters.

Al Jordan: Carve and Paint a Red-tailed Hawk Head:

Carve, texture and paint a red-tailed hawk head with master falconer and master carver Al Jordan.

Paint a Harlequin Drake: Beginner-advanced. Using brushes and acrylic paints on a cast from an original carving by Glenn McMurdo, master the intricacies of this unmistakable bird. Learn color theory, how to add and blend colors, and how to paint final detail, as well as the how and why of paint and paintbrushes.

Vic Hood: Carving a Human Bust:

Vic has been teaching wood carving for over 25 years and has won top awards in various competitions throughout the country. Vic has designed a class that encourages students of all levels to create their own piece of art. There will be a strong emphasis on design, creativity, and technical execution. This is not a portraiture class, but subject based for example, an American Indian, Sea Captain, Mountain Man, etc. It is up to the student to decide what they want to carve. The structure of the class allows for all levels of carving experience, from beginners to accomplished. There will be models available to help students to develop ideas and design. This is a mallet class therefore students need to bring standard size tools; some palm tools will also work. If you do not have mallet tools, they will be provided.

1- OR 2-DAY CLASS:

WEDNESDAY-THURSDAY, APRIL 19-20

Laurie & Mike Truehart: Join us for a class in project advancement. Bring a current project you are working on and get tips, techniques and advice. This class is open to all skill levels and all carving subjects (birds, animals, objects, etc.) Please note that this will be offered as a one-day or a two-day course, with participants able

to take the day(s) of their choosing. Participants are encouraged to bring their own tools and materials. Tools can be provided for those who travel and are unable to bring their own. At least one month before the class, please ensure the instructors know what piece you intend to bring so they can be prepared to help to the fullest extent.

Pat Godin: Painting Feathers: Pat Godin will lead and instruct the students through the painting of various styles of feathers found frequently on birds. This will include the painting of iridescence (Wood Duck Drake), complex patterns (Mallard Hen), and vermiculation. Through the two days 3 or 4 projects will be worked on. The painting will be accomplished on gessoed boards supplied by Pat. In addition to the painting methods, three-dimensional painting techniques will also be taught. Students will be required to bring their own paints, brushes, airbrush and compressor, palettes and other supplies and materials.

1-DAY CLASS: THURSDAY, APRIL 20

Painting with a Golden-crowned Kinglet with Josh

Guge: Painting is always the most difficult aspect of the bird sculpting process. Josh will teach you how to conquer these challenges in a one-day paint class. He will cover all aspects of painting including:

- Using thin washes to create depth in base coats
- How to utilize texture to benefit your painting results
- The right brushes and techniques for adding detail to your birds

These techniques help Josh create a soft and realistic look that has gained him a reputation of award-winning art. Josh will provide a study cast or students can bring in their own wood carved golden crowned kinglet. Students must ensure it is sealed and ready to paint. Paints will be provided by the instructor.

1/2-DAY CLASSES:

THURSDAY-SUNDAY, APRIL 20-23

Saturday: Ross Smoker: Carving for Beginners: Ross Smoker leads a class in basic carving techniques to create a miniature songbird. Participants will finish the class with an unpainted shorebird. Tools and materials provided.

For pricing and an updated list of classes, lectures, workshops and more, please check www.wardmuseum.org as we approach Worlds 2023!

Pre-registration is required for all classes on a first-come, first served basis. Payments are due by **March 1, 2023** and can be paid online, through the mail, over the phone, or in person at the Ward Museum, 909 S. Schumaker Dr., Salisbury, MD 21804. Those who rolled over their class payments from 2020 are still enrolled in their class. Those who were refunded payments are not enrolled in any class.

WARD FOUNDATION LIVING LEGEND

WARD FOUNDATION LIVING LEGEND AWARDS



Larry Barth



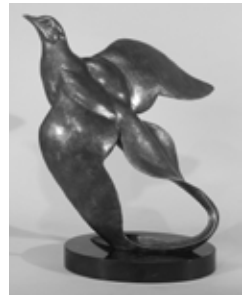
Jeff Brunet



Dan Burgette

This award recognizes individuals who:

- Have been long-time advocates for wildfowl art and the Ward Museum.
- Are generous in spirit and commitment to teaching others and passing on their knowledge, skills and talents.
- Have created an impact on the field of wildfowl art and/or the Ward World Championship Wildfowl Carving Competition.



Celebrating the 2020-2021 Recipients
*Read the extended biographies of all Ward Foundation Living Legends
at www.wardmuseum.org*

Living Legend Award Ceremony and Dinner
The Grand Hotel
Friday, April 21 • Reception begins at 5:30 p.m.

Announcing the 2022-2023 Recipients



Jeff Bounds



Jeff Rechin



Ross Smoker

LIVING LEGEND AWARD DINNER

Celebrate the 2020-2023 Living Legends on Friday, April 21

Enjoy an evening honoring this year's recipients at the Grand Hotel & Spa, located on the famous Ocean City boardwalk. Tickets are \$65 for Ward Museum members, \$75 non-members. Seats are limited, get your tickets early.

Tickets and sponsorship of the Living Legend Dinner can be completed using the enclosed order form (see page 7) or visit www.wardmuseum.org.

The Grand Hotel is offering special rate to all carvers, competitors and guests. Give them a call (see page 26) for special early birds rates.

Consider a sponsorship of this event. The Living Legend awards are made possible through the generous support of the wildfowl art community. Gifts of \$150 or more will be recognized as sponsors of the awards. Gifts of \$250 or more will be recognized as Signature Sponsors and will receive two tickets to the dinner and enhanced recognition.



Grand Hotel & Spa

2100 Baltimore Avenue, Ocean City, Maryland 21842

Friday, April 21

5:30 p.m. Reception • 6 p.m. Dinner

2023 *Living Legends*



AWARD DINNER

April 21, 2023
doors open at 5:30 p.m.

Join us in honoring our 2022-23 Living Legends
Jeff Bounds, Jeff Rechin, and Ross Smoker

Also honoring 2020-21 awardees
Larry Barth, Jett Brunet, and Dan Burgette

\$65 MEMBERS
\$75 NON-MEMBERS

Grand Hotel and Spa
2100 Baltimore Ave.
Ocean City, MD 21842

Buffet-style dinner service featuring local favorites
Cash bar available during the event

FOR MORE INFO AND TICKETS:

www.wardmuseum.org
410-742-4988

2023 Living Legend Dinner Ticket Order Form

Ticket delivery options include mail or will-call. For mail delivery, tickets will be mailed after April 11, 2023, and include a \$1 handling fee per ticket mailed. Ticket orders received after April 11 will be held at will-call at the 50th Ward World Championship Membership Booth on Thursday and Friday until noon or your ticket can be picked up at the dinner. You can also purchase tickets online at www.wardmuseum.org.

Name: _____

Address: _____

Phone: _____ Email _____

Description	Qty	Price	Total
Ticket for Ward Museum Member		\$65 /each	
Ticket for Non-Ward Museum Member		\$75 /each	
Handling Fee (per ticket if mailed)		\$1 /per ticket mailed	
Donation to Living Legend Fund. <i>\$250 or more receives 2 complimentary tickets to dinner and recognition at event</i>	Enter amount →		
Table Sponsor <i>Receive 8 complimentary tickets to dinner and recognition at event</i>		\$1,000	
Delivery Method: <input type="checkbox"/> Mail <input type="checkbox"/> Will-Call		Total Amount Included:	

Payment Information

____ Check Enclosed — Make payable to the Ward Foundation

____ Credit Card # _____

Expiration Date _____

CVC# _____

Signature _____



Return order form with payment to: Ward Foundation, 909 South Schumaker Dr, Salisbury, MD 21804

Be sure to check out the Grand Hotel & Spa for your stay during the competition.
**The Grand is offering special rates to all competitors and guests during the week of the
 Ward World Carving Competition.**

For more information, check out their website
www.grandhoteloceancity.com or contact them at 800-447-6779.

READY TO JOIN OR RENEW YOUR MEMBERSHIP?

To renew, visit us online at www.wardmuseum.org and log in to view your account information and renew, or fill out the form below.

Not a member yet? Join today! Simply add a membership to your cart online, or mail in the form below, to begin your journey exploring art, nature and tradition with the Ward Museum.

The Ward Museum **Individual Memberships** include the following benefits:

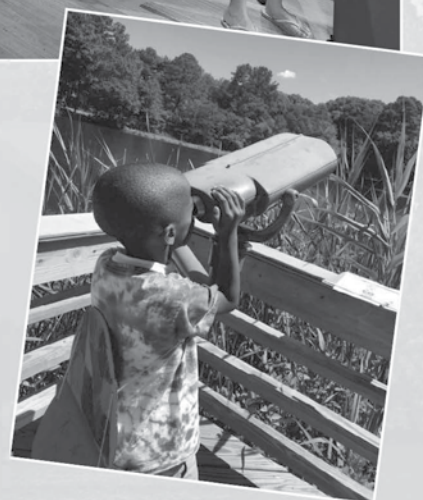
- Free year-round admission to the Museum, with one membership card for Individuals and two for Families.
- Subscription to the twice-annual *Ward Museum* journal
- The annual Ward World Championship Guide
- 10% discount in Treetops Gifts at the Museum
- Discounts on classes, seminars and events
- AFLAC group rate insurance policies

The **Family & Friends Membership** includes all of the above, as well as membership in the North American Reciprocal Museums Program (NARM). NARM membership provides discounts and/or free access to over 1,000 museum nationwide.*

MEMBERSHIP LEVELS

Members we can count on year after year help us ensure quality exhibits and programming well into the future through annual contributions to the Ward Museum. Learn more by contacting us at 410-742-4988 ext. 105 or wardmembership@salisbury.edu.

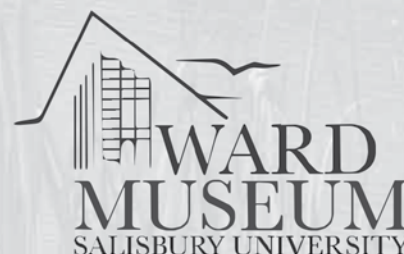
- **The Wild Goose Club.** Wild Geese enjoy the above Friends Membership benefits, as well as two tickets to the Ward World Championship, recognition in publications and 10 guest passes annually.
- **The Golden Goose Society.** Golden Geese enjoy Wild Goose Club benefits, as well as a recognition plaque in the Ward Museum, invitations to exclusive Spring and Fall Migration events, and a commemorative pin.
- **The Benefactor Society.** Benefactor Society members enjoy Golden Goose Club benefits, as well as a private tour of the Ward Museum with the executive director and curator for themselves and their guests.



☐ Yes, sign me up as a member, or renew my membership*

MEMBERSHIP LEVELS:

<input type="checkbox"/> Individual \$50	<input type="checkbox"/> Wild Goose Club \$500
<input type="checkbox"/> Family & Friends Membership \$75*	<input type="checkbox"/> Golden Goose Society \$1,000
	<input type="checkbox"/> Benefactor Society \$5,000



Membership ID# (optional) _____

Name _____

Address _____

City _____ State _____ Zip _____

Phone _____ Email _____

☐ Enclosed is my check payable to the Ward Museum

☐ Please charge my credit card the above checked amount

CC# _____ Security# _____ Expiration Date _____

Mail to: Ward Museum, 909 S. Schumaker Drive, Salisbury, MD 21804

* Memberships for those outside the U.S. can be purchased at an additional fee. For details please email wardmembership@salisbury.edu or call 1-410-742-4988 ext. 105 or 120. International fees are waived for the Friends Membership.



Guyette & Deeter, Inc.

The Leading and Most Trusted Decoy Auction Firm in the World
Guaranteed Condition Reports

Conveniently located in St. Michaels, Maryland.

Specializing in the sale and handling of valuable decorative carvings.

Contact Jon Deeter, 440-610-1768 or Zac Cote, 207-321-8091 to discuss.

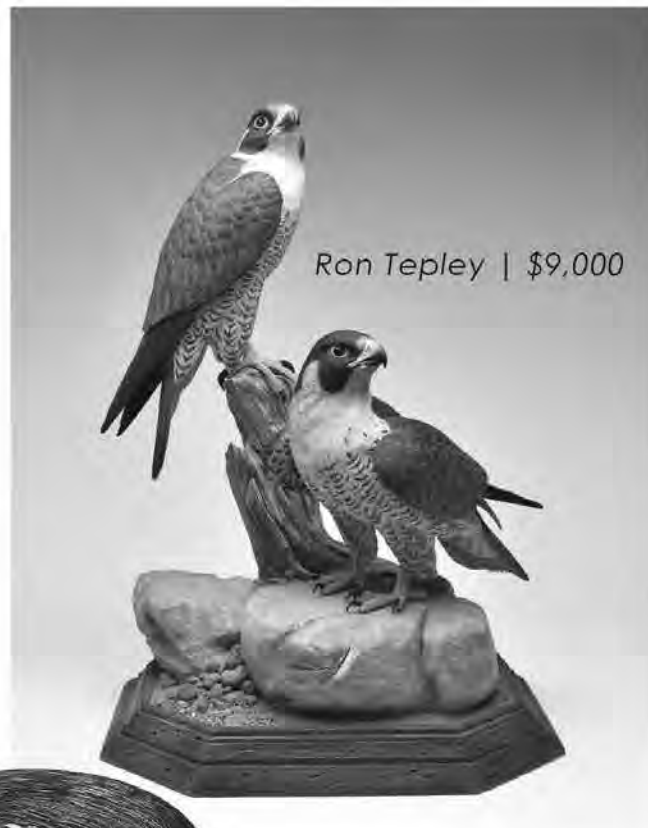
Recent sales of decoratives in Guyette & Deeter auctions.



Jim Foote | \$13,200



John Scheeler | \$9,000



Ron Tepley | \$9,000



*Larry Hayden
\$42,000*

*World auction
record for carver*



410-745-0485
www.guyetteanddeeter.com
1210 S. Talbot St, Unit A
St. Michaels, MD 21663

REGISTRATION

Thursday, April 20, from 11 a.m.-8 p.m. and Friday, April 21, from 7-9 a.m.

LOCATION: Roland E. Powell Convention Center, 40th and Coastal Highway, Ocean City, Maryland.

- All entries must be hand-delivered either by the carver or a designated second party, except for mail-ins.
- Mail-in entries will be accepted for Lem & Steve and Youth. See page 15 for instructions.
- Entry fees are paid at registration. Registration form will be completed on site.
- The Ward Foundation will assign a registration number when your entries are processed.
- The name of the competitor should not be visible on entries; covering with masking tape is adequate. **The name of the species should be on the bottom of the base.**
- Competitors will receive a competitor badge and can purchase guest badges at registration, \$5 members and \$10 non-members.
- Competitors will be allowed early admittance to the show

at 8 a.m. Sunday. Official competitor name badges must be visibly worn to gain entry during these pre-show hours. Competitor's guests, with guest badges, may accompany competitor.

- **We do not allow removal of entries before 4 p.m. Sunday.** All persons removing carvings must be carrying the registration receipt for those carvings.
- Competitors are asked to submit documented reference materials at the time of registration for those birds not listed in National Audubon Society The Sibley Guide to Birds. These reference materials are for the accurate judging of your bird.
- Provide documentation at registration about the construction of your entry that would help the judging process, i.e. structural strengthening techniques used in SR. Theses notations will be given to the judges for their attention during their initial evaluation.
- **Any artist with an entry not suitable for tabletop display is required to notify the Ward Foundation by April 2. Under no circumstances should an artist drill an entry or base onto a table in the convention center.**
- Artists are encouraged to place their business cards beside

their work after judging is completed. Names of carvers of the Champagne Waterfowl Division entries will be identified by the Ward Foundation after judging.

- Youth carvers are welcome to enter "adult" levels of competition but once a carving is entered outside of the youth competition, it is no longer eligible to be judged in the youth competition.
- **Please note that once an entry is placed in the competition hall, competitors will not be allowed to move their entry for any reason without prior permission of the show director or a floor captain nor enter the center areas of the World and Master divisions.**
- Contact the Ward Foundation at 410-742-4988 ext. 106, or email WardEvents@salisbury.edu with any questions. Visit us on the web at www.wardmuseum.org.
- The ultimate responsibility of accurately registering an entry rests with the carver. The Competition Committee reserves the right to move a carving prior to judging if it is discovered that it was inappropriately registered or misplaced.
- Sample Registration forms online at www.wardmuseum.org

SCHEDULE

JUDGING FRIDAY

- 8:30 a.m. Clerks' Meeting**
Located in the Performing Arts Center
- 8:30 a.m. Judges' Meeting**
Located in Room 209
- 9:30 a.m. WORLD DIVISIONS**
- A - Decorative Lifesize Wildfowl
 - C - Decorative Miniature Wildfowl
 - D - Interpretive Wood Sculpture
 - SR - World Shootin' Rig (Judged in Assawoman Bay*)
- 10 a.m.**
- B - Decorative Lifesize Waterfowl Pairs
 - WG - Single Gunner Decoy
- 10 a.m. ADVANCED, INTERMEDIATE, NOVICE DIVISIONS**
- E - Decorative Lifesize Floating Waterfowl
 - F - Decorative Lifesize Wildfowl
 - G - Decorative Miniature Wildfowl - Novice then Intermediate
 - H - Interpretive Wood Sculpture
- 11 a.m. MASTERS DIVISIONS**
- ME - Decorative Lifesize Floating Waterfowl
 - MF - Decorative Lifesize Wildfowl
 - MG - Decorative Miniature Wildfowl
 - MH - Interpretive Wood Sculpture
- 12 p.m. LEM & STEVE WARD DIVISIONS**
- GP - Gunning Pair (Judged in Assawoman Bay*)
- 1 p.m. FEATHER & FRONDS DIVISIONS
FISH CARVING COMPETITION
"OLD BIRD" ANTIQUE DECOY**
- 1:30 p.m. ADVANCED DIVISIONS**
- G - Decorative Miniature Wildfowl
- 2 p.m. SCULPTURE COMPETITION**
- 2 p.m. LEM & STEVE WARD DIVISIONS**
- GPC - Gunning Pair Champion (If time permits; judged in Assawoman Bay*)
- 4:30 p.m. INTERMEDIATE & NOVICE BEST IN SHOW**

JUDGING SATURDAY

- 9 a.m. BENCH DIVISIONS**
- J and JB - Bench Class
- 9 a.m. LEM & STEVE WARD DIVISIONS**
- CA - Contemporary Antique
 - CD - Contemporary Decoys
 - SD - Shorebird Decoy
 - SW - Decorative Smoothie Waterfowl
 - SWC - Decorative Smoothie Waterfowl Champion
 - GPC - Gunning Pair Champion (If not judged on Friday; judged in Assawoman Bay*)
- 10 a.m. OPEN**
- OCL - Open Carving Best in Division Lifesized
 - OCM - Open Carving Best in Division Miniature
- 11 a.m. LEM & STEVE WARD DIVISIONS**
- SS - Decorative Smoothie Shorebirds and Wading Birds
 - CW - Champagne Waterfowl
 - CWC - Champagne Waterfowl Champion
- 11 a.m. YOUTH COMPETITION**
- Entries will be critiqued during a question and answer period between participants and judges when judging is complete.
- * NOTE: Judging times on the Bay may be changed at the judges'/committee's discretion

AUCTION

- 2 p.m. LOCATED IN AB HALL**
- Ward World Class Art and Carving Benefit Auction

AWARDS PRESENTATIONS FRIDAY

- 5:30 p.m. Living Legends Awards & Dinner**
Located in the Grand Hotel

SATURDAY

- 5 p.m. DRAWING OF LOCAL OCEAN CITY MEMBERSHIP RAFFLE ITEMS**
- 5:30 p.m. LOCATED IN AB HALL**
- Living Legends
 - Youth
 - Feathers and Fronds
 - Sculpture
 - Divisions: Lem & Steve, Novice, Intermediate, Advanced
 - Special Memorial Awards
 - Dr. John P. Trabuchi Memorial Best Intermediate Diver
 - William Schultz Memorial Intermediate Decorative Lifesize Wildfowl, Best in Waterfowl
 - Richard "Dick" LeMaster Memorial Intermediate Decorative Lifesize Floating Waterfowl, Best Mallard Hen
 - Mike Wavercock Memorial Intermediate Decorative Lifesize Floating Waterfowl, Best Bufflehead
 - Robert "Bob" Guge Memorial Award, Novice Decorative Lifesize Wildfowl, Best Songbird
- 6 p.m. Masters**
- 6:30 p.m. World Champions**

SUNDAY

- 2 p.m. People's Choice Awards sponsored by Jaymes Company**

2023 WORLD COMPETITION RULES

COMPETITION LEVELS

THE COMPETITION IS OPEN TO WOOD SCULPTORS OF ANY LEVEL OF ARTISTIC SKILL. IN ADDITION TO WORLD AND MASTERS, THERE ARE THREE GENERAL LEVELS OF COMPETITION: ADVANCED, INTERMEDIATE AND NOVICE.

Carvings are grouped together by levels indicated by colored banners hanging over the display areas.

- **World (white banners):** In the six World Divisions, entrants compete for the title of World Champion, championship ring and cash award.
- **Masters (turquoise banners):** Only carvers who have previously won two Best of Show awards in Advanced, or placed 1st, 2nd or 3rd in World in any division other than SR, Shootin' Rig are eligible to enter in Masters and are no longer eligible to enter Advanced. They are eligible to enter any of the four divisions of the Masters Class competition and/or they may elect to compete for a World title. This applies to either an individual carver or a carver in partnership with another artist. If it is discovered that a carver has entered Masters without meeting the eligibility requirement, the entry will be immediately removed from the Masters area. If judging has already occurred, any awards will be rescinded.
- **Advanced (blue banners):** This level represents advanced amateur and professional carvers, including those who have obtained top rankings in competitions. Entrants compete for cash awards, ribbons and rosettes. Advanced is not open to MASTER carvers. Any carver who is not eligible for Masters but has entered at the World Level, must enter Advanced.
- **Intermediate (yellow banners):** This level includes carvers who have refined their sculpture and painting skills beyond the novice level. Intermediate carvers compete for ribbons, rosettes and Best in Show cash awards. Carvers who have won one Best in Show or two Best in Division (excluding Bench) awards at this level in the World Competition must move to the Advanced level. Carvers who have been consistent blue ribbon winners at this level are encouraged to move up to Advanced.
- **Novice (red banners):** This level is reserved for entry-level carvers. Novice carvers compete for ribbons, rosettes and Best in Show cash awards. Carvers who have won one Best in Show or two Best in Division (excluding Bench) awards at this level in the World Competition must move to the Intermediate level. Carvers who have been consistent blue ribbon winners at this level are encouraged to move up to Intermediate.

JUDGING CRITERIA

The following definitions of judging criteria have been adopted by the Ward Foundation. Each criteria is given equal weight in the judging process. The higher the level the more critically assessed. These criteria will be used for all of the following levels of competition — World, Masters, Advanced, Intermediate, and Novice — in all divisions except Interpretive:

- **Technique/Craftsmanship** refers to the technical skills involved in bird carving: sculpting, painting and finishing

techniques and their execution. It covers the bird or birds, any habitat or accessories that may be involved and the base itself if there is one. Craftsmanship should be consistent throughout the entire piece. Good craftsmanship is basic to bird carving. Without it, a piece will go no further.

- **Accuracy** involves the correctness of a piece from a scientific perspective. Is the bird the right size? Are the feathers the right shape? Is the coloration and pattern correct? Are the eyes properly placed? Do the toes have the right number of joints and are they in the right places? All these are questions of accuracy. Anything accompanying the bird must be given the same scrutiny. Accuracy involves the natural history of the whole piece, all of its components and the appropriateness of these components together.
- **Essence of the Species** involves taking accuracy one step further. It involves a thorough knowledge of one's subject and the ability to capture an attitude in wood. You see a bird on your lawn at dusk. You can't see any details in the failing light, just a silhouette, and yet the hop and cock of the head immediately identify it as a robin. The essence of the bird is there without a feather count, a measurement of length or a check on color. You may have flawlessly crafted your bird with faultless accuracy, but unless you have captured the essence of your subject and given it the spark that brings it alive, your bird will not achieve its fullest potential.
- **Artistry** of a piece involves its design and composition. This is where presentation, innovation and creativity all come into play. There should be a beauty in the concept apart from the beauty of the bird itself. Line, form, content, color, mass and movement should all be working together to create an integrated whole. Of all the concerns in carving, artistry is the most elusive, the most difficult to explain, to teach, to analyze in the work of others, and to instill in one's own work. But the difficulty is an indication of the importance.
- **Overall Presentation.** What is rare is often what is valuable. Bird carving requires a multitude of technical skills brought together in overall presentation. Additionally, it requires a thorough knowledge and understanding of birds scientifically as well as emotionally. But most importantly, it involves the ability to bring all these elements together artistically. If bird carving is to move beyond craft to art, our goals and expectations must do the same. No artificial lighting will be used during judging, artificial lights (handheld or tabletop) are not permitted and will not be on the display.
- **All criteria are important.** They all overlap and build on each other. In order for a piece to reach its fullest potential it must succeed in all five areas simultaneously. For the sake of clarity we have dealt with them individually, but in reality the distinctions are not so clear cut.

As the competitor moves through the different levels of competition and eventually to the Masters and Advanced levels, technique/craftsmanship and accuracy as criteria are taken almost for granted, as these are the tools expected to have been mastered, allowing the artist to concentrate on essence of the species and artistry of the competition piece entered. Please refrain from posting images of your work in progress to finished carving of your entry pieces on social media.

Some rules are open to individual interpretation, giving an artist as much artistic license as possible; some are very specific. It is up to the judges to interpret the rules with guidance from the Ward Foundation. The judges' decisions are final.

DECORATIVE MINIATURE MEASURING CRITERIA

Entries must be one half lifesize or less. The Ward Foundation reserves the right to move entries deemed too large for miniature to the bench class.

WATERFOWL PAIR

Unless otherwise stated, a waterfowl pair is a drake and a hen of the same species.

RULES FOR BEST IN CATEGORY AND DIVISION AWARDS

- **First, Second and Third in Category winners (Division E, CD, GP, SW and YG)** will be determined with First in Category being selected from the First in Species winners. Second in Category will be chosen from the remaining First in Species winners along with the Second in Species of the previously selected species. Third in Category will be chosen from the remaining First in Species winners plus the next runner up at the species level in the species previously selected for First and Second in Category. In other words, it is possible to select First, Second and Third in Category from the same species.
- **Best in Division (All Divisions except World's, MH & H)** will be selected from the winner of each of the Categories. Second in Division will be selected from the remaining First in Category winners plus the Second in Category winner from the previously chosen Category. Third in Division will be chosen from the remaining First in category winner(s) and the next runner up at the Category level in the category(ies) previously selected for First and Second Division. In other words, it is possible for judges to select First, Second and Third in Division from one species.
- **Division MH & H** will be judged for Best in Division with second and third awarded as well.

Competitors must submit documented reference materials at the time of registration for those birds not listed in the National Audubon Society *The Sibley Guide to Birds*. These reference materials are necessary for the accurate judging of your bird. The Ward Foundation is not responsible for lost reference materials.

CHAMPION LEVEL WORLD CLASS

THE SIX WORLD DIVISIONS PROVIDE THE OPPORTUNITY FOR ADVANCED LEVEL CARVERS TO COMPETE FOR THE TITLE OF WORLD CHAMPION. THESE ARE ELITE DIVISIONS FOR THOSE CARVERS WHOSE WORK DEMONSTRATES THE HIGHEST LEVEL OF ARTISTRY AND TECHNIQUE. JUDGING STANDARDS ARE THE MOST DEMANDING WITH THE VERY BEST CARVINGS EARNING THE TITLE "BEST IN WORLD." IF A CARVER ENTERS IN THE WORLD CLASS AND PLACES IN THE FUTURE THEY MUST ENTER MASTERS; IF THEY DO NOT PLACE AND NEVER HAVE PLACED, THEY MUST ENTER ADVANCED.

Any artist with an entry not suitable for tabletop display is required to notify the Ward Foundation by April 1, 2023.

SALISBURY UNIVERSITY PRESIDENT'S CHOICE

SU President Carolyn Ringer Lepre will choose her favorite World Division Carving to be displayed at SU for one year. Winner of this award will get a special rosette and \$75 in prize money.

ENTRY FEE

\$150 per entry, each division

Entries are limited to one per division. World division competitors entering additional pieces must enter at the Advanced levels or, if qualified, at the Masters level.

Divisions

- A—Decorative Lifesize Wildfowl
- B—Decorative Lifesize Waterfowl Pair
- C—Decorative Miniature Wildfowl
- D—Interpretive Wood Sculpture
- SR—Shootin' Rig
- WG—Single Gunner Decoy

1. Entries must have been completed since April 30, 2019, and not entered in the hybrid 2022 show.
2. Entries must be original in design and concept. If after judging it is determined that this policy has been ignored, the award will be rescinded.
3. Entries are limited to one per Division, per entrant.
4. Species and sex must be designated on the entry.
5. Name of artist should not be visible.

Divisions A and C—Decorative Lifesize Wildfowl and Decorative Miniature Wildfowl

Entries will be judged on Technique/Craftsmanship, Accuracy, Essence of Species, and Artistry and Overall Presentation.

1. The entry will consist of one or more birds of any species with emphasis on creating an innovative and artistic composition.
2. Entries are to be made of wood. Other materials may be used for habitat and structural purposes; however, they are to be hand formed with the exception of eyes.

Division B—Decorative Lifesize Waterfowl Pair

The 2023 species is a Canada Goose. Entries will be judged on Technique/Craftsmanship, Accuracy, Essence of the Species, Artistry, Overall Presentation and Proper Floatation.

1. Entries are to be made of wood; glass eyes are permitted and materials other than wood can be used in fragile tails and crests.
2. Entries must float in a natural position but do not have to self-right.
3. Judging for Decorative Lifesize Waterfowl will be limited to the designated waterfowl only.

4. If a base is used, it must be separate from the carving and indicate placement. The base will not be considered part of the carving and will not be displayed during judging.
5. Any deterioration of the paint or structural integrity at the completion of judging will result in the disqualification of the entry.

Division C—Decorative Miniature Wildfowl

1. Entries must be one half lifesize or less. All other criteria are the same as Division A.

Division D—Interpretive Wood Sculpture

Entries will be judged on craftsmanship, artistry, interpretation of the essence of the wildfowl and originality. A carving should emphasize form, content and movement rather than a realistic duplication of the wildfowl. It should be presented in a style that provokes thought and wonder.

1. Subject may be entrant's choice from any wildfowl.
2. Entry is to be entirely of wood with the exception of the structural elements. The base may be of other material and will be considered as part of the sculpture.
3. If a supporting pedestal under the base is needed, it must be provided by the artist and it will not be considered as part of the sculpture.
4. Interpretive Wood Sculpture entries have no size restrictions.

Division SR—Shootin' Rig

These decoys are rooted in the classic gunning decoys' function and design. As a World Class division, they are judged on Technique/Craftsmanship, Accuracy, Artistry, Overall Presentation and Proper Floatation. Judging is a two-part process. It begins on the table where they are judged in hand and reviewed for compliance of the rules. Final judging is done while the entries are floating on Assawoman Bay at a minimal distance of 20 feet. Judges remain on the judge's platform until the judging is completed. Decoys once set remain at anchor for the duration of judging.

1. Any worldwide species of waterfowl, including pelagic and coastal seabirds, may be selected. All seasonal plumages are acceptable.
2. Three birds are required: a drake and hen of the same species with a third bird of choice.
3. Decoys shall be floated as a rig and they must self right. Anchor lines with a maximum length of 6 to 8 feet will be attached to each rig component. Sufficient weights are required.
4. Decoys will be judged under natural weather conditions in Assawoman Bay and demonstrate proper floatation.
5. Decoys shall be constructed of wood or cork; glass eyes are permitted. All vulnerable areas must be durable; materials other than wood can be used in tails and crests. During registration, carvers have the option to submit in writing any structural strengthening techniques used in their rig. This information will be identified by carver's number and given to the judges during their initial evaluation.
6. No burning or fine stoned texturing is allowed. However, simulated texture using gesso, modeling paste, or texture paint in combination with combing, scratching, or brushing is acceptable. Minimal carving techniques used to simulate feather texture on heads, i.e. merganser heads, are acceptable.
7. Any deterioration of the paint or structural integrity at the completion of judging will result in the disqualification of the entry.

Division WG—Single Gunner Decoy

The 2023 species is a wood duck (any, worldwide). This division emphasizes simplicity and most resemble the functional tool of the

AWARDS

Entries winning first place in each division will be on loan to the Ward Museum and exhibited by the Museum for one year.

Salisbury University President's Choice

\$75 and on display at Salisbury University for one year.

A—Decorative Lifesize Wildfowl

BEST IN WORLD	John Scheeler Memorial Award — \$3,000, World Champion ring, trophy and rosette
SECOND IN WORLD	\$1,500 and rosette
THIRD IN WORLD	\$750 and rosette

B—Decorative Lifesize Waterfowl Pair

BEST IN WORLD	Tan Brunet Memorial Award — \$3,000, World Champion ring, trophy and rosette
SECOND IN WORLD	\$1,500 and rosette
THIRD IN WORLD	\$750 and rosette

C—Decorative Miniature Wildfowl

BEST IN WORLD	\$3,000, World Champion ring, trophy and rosette
SECOND IN WORLD	\$1,500 and rosette
THIRD IN WORLD	\$750 and rosette

D—Interpretive Wood Sculpture

BEST IN WORLD	\$3,000, World Champion ring, trophy and rosette
SECOND IN WORLD	\$1,500 and rosette
THIRD IN WORLD	\$750 and rosette

SR—Shootin' Rig

BEST IN WORLD	Jimmy Vizier Memorial Award — \$3,000, World Champion ring, trophy and rosette
SECOND IN WORLD	\$1,500 and rosette
THIRD IN WORLD	\$750 and rosette

WG—Single Gunner Decoy

BEST IN WORLD	Rich Smoker Heritage Award — \$1,500, World Champion ring, trophy and rosette
SECOND IN WORLD	\$750 and rosette
THIRD IN WORLD	\$375 and rosette

World Lifesize Waterfowl Pair Species:

- 2023 - Canada Goose
- 2024 - Black Duck
- 2025 - Harlequin Duck
- 2026 - Blue Goose
- 2027 - Mandarin Duck
- 2028 - Scoter (any, worldwide)
- 2029 - Puffin (all and a pair)

Continued on page 13

decoy maker. Entries will be reviewed for compliance with rules prior to judging. Decoys will be judged 20 feet from the judges on Assawoman Bay (weather dependent).

1. Carving and painting should be functional enough to be used as tools for hunting. No undercut feathers. Wood, cork and canvas allowed.
2. Decoys will be floated and must self-right from any position, except geese, swan and confidence, which must right only from their side(s). All entries will be judged for stability and proper floatation.

3. Carvings may be hen or drake of said species. They should be lifesize or oversized with no preference shown by judges.
4. No burning or fine-stoned texturing is allowed. However, simulated texture using gesso, modeling paste or texture paint in combination with combing, scratching or brushing is acceptable. Minimal carving techniques used to simulate feather texture on heads, i.e. merganser heads, are acceptable.
5. Painting: Can be simple in style, or in the style of a contemporary antique with no preference shown by judges.
6. Any deterioration of paint or structural integrity at the completion of judging will result in the disqualification of the entry.

World Single Gunner Species:
2023 Wood Duck (Drake, North American)
2024 Ring Necked Duck (Drake)
2025 Blue Goose
2026 Black Duck (Drake)
2027 Goldeneye (Drake)
2028 White-fronted Goose

LEVELED COMPETITION

MASTERS

THE MASTERS CLASS OPENS UP OPPORTUNITIES FOR CHAMPION CARVERS TO ACHIEVE A NEW LEVEL OF EXCELLENCE IN THEIR ART AND TO BE RECOGNIZED AND HONORED WITH AWARDS AT THIS MOST COMPETITIVE LEVEL.

Only carvers who have previously won two Best of Division awards in Advanced, or placed 1st, 2nd or 3rd in World in any division other than SR, Shootin' Rig, are eligible to enter in Masters. They are eligible to enter any of the four divisions of the Masters Class competition and/or they may elect to compete for a World title. This applies to either an individual carver or a carver in partnership with another artist. If it is discovered that a carver has entered Masters without meeting the eligibility requirement, the entry will be immediately removed from the Masters area. If judging has already occurred, any awards will be rescinded.

Any artist with an entry not suitable for tabletop display is required to notify the Ward Foundation by April 1, 2023.

ENTRY FEE

\$100 first entry, \$50 each additional entry

DIVISIONS

ME—Decorative Floating Lifesize Waterfowl

MF—Decorative Lifesize Wildfowl

MG—Decorative Miniature Wildfowl

MH—Interpretive Wood Sculpture

Species list on page 21.

1. Entries must have been completed since April 30, 2019. Entries must be original in design and concept. If after judging it is determined that this policy has been ignored, the award will be rescinded.
3. Entries are to be made out of wood. Other materials may be used for habitat and structural purposes; however, they are to be hand formed with the exception of eyes.
4. Multiple entries in each division are allowed.
5. Sex and species must be designated on the entry.
6. Name of the artist should not be visible.

Division ME—

Decorative Lifesize Floating Waterfowl

1. Decorative Lifesize Floating Waterfowl consists of three categories: Marsh Ducks; Diving Ducks; and Geese, Swan and Confidence.
2. If the artist enters more than one carving of the same species, both sexes must be represented.
3. Entries are to be made of wood; glass eyes are permitted and materials other than wood can be used in tails and crests.
4. Entries must float in a natural position but do not have to self-right.

5. Judging will be limited to the waterfowl floating in the tank only.
6. Any deterioration of the paint or structural integrity at the completion of judging will result in the disqualification of the entry.

Division MG—Decorative Miniature Wildfowl

1. Entries must be one half lifesize or less.

Divisions ME, MF and MG

1. Entries will be judged on Technique/Craftsmanship, Accuracy, Essence of Species, and Artistry and Overall Presentation.
2. Divisions MF and MG are divided into the following categories with species in each category judged against one another:
 Category 1: Waterfowl, Shorebirds,
 Wading Birds and Seabirds
 Category 2: Upland Game Birds, Birds of Prey
 Category 3: NP Land Birds and Songbirds.

Division MH—Interpretive Wood Sculpture

Entries will be judged on artistry, interpretation of the essence of the wildfowl and originality. A carving should emphasize form, content and movement rather than a realistic duplication of the wildfowl. It should be presented in a style that provokes thought and wonder.

1. Subject may be entrant's choice from any wildfowl.
2. Entry is to be entirely of wood with the exception of the base and eyes. The base may be of other material and will be considered as part of the sculpture.
3. If a supporting pedestal under the base is needed, it must be provided by the artist and it will not be considered as part of the sculpture.
4. Interpretive Wood Sculpture entries have no size restrictions.



Masters, Miniature Birds of Prey
 Best in Division, Barred Owl with
 Black Racer Snake, by Gary Eigenberger
 of Green Bay, WI

AWARDS

ME—Masters Decorative Lifesize Floating Waterfowl

	FIRST	SECOND	THIRD
3 Categories	ribbon	ribbon	ribbon
Best in Masters	\$1000 Rosette & Medallion	\$500 Rosette & Medallion	\$250 Rosette & Medallion

MF—Masters Decorative Lifesize Wildfowl

	FIRST	SECOND	THIRD
3 Categories	ribbon	ribbon	ribbon
Best in Masters	\$1000 Rosette & Medallion	\$500 Rosette & Medallion	\$250 Rosette & Medallion

MG—Masters Decorative Miniature Wildfowl

	FIRST	SECOND	THIRD
3 Categories	ribbon	ribbon	ribbon
Best in Masters	\$1000 Rosette & Medallion	\$500 Rosette & Medallion	\$250 Rosette & Medallion

MH—Interpretive Wood Sculpture

	FIRST	SECOND	THIRD
Best in Masters	\$1000 Rosette & Medallion	\$500 Rosette & Medallion	\$250 Rosette & Medallion

Special Thanks

Jeff and Marg Bounds wish to recognize the high level of achievement attained by the winners of this prestigious competition by sponsoring the Master Medallions in the memory of their parents, Charles and Eleanor Bounds.

**Thank you to the
 Bounds Family.**



ADVANCED, INTERMEDIATE AND NOVICE

CARVERS MAY ENTER AT ONLY ONE LEVEL WITHIN ADVANCED, INTERMEDIATE AND NOVICE. WORLD DIVISION COMPETITORS ENTERING ADDITIONAL PIECES MUST ENTER AT THE ADVANCED LEVEL OR, IF QUALIFIED, AT THE MASTERS LEVEL.

Any artist with an entry not suitable for tabletop display is required to notify the Ward Foundation by April 1, 2023.

ADVANCED CLASS

REPRESENTS ADVANCED AMATEUR AND PROFESSIONAL CARVERS, INCLUDING THOSE WHO HAVE OBTAINED TOP RANKINGS IN COMPETITIONS.

ENTRY FEES

\$60 First entry, \$35 Each additional entry

INTERMEDIATE CLASS

THE INTERMEDIATE CLASS INCLUDES CARVERS WHO HAVE ADVANCED BEYOND THE NOVICE LEVEL. SEE PAGE 11.

ENTRY FEES

\$35 First entry, \$15 Each additional entry

NOVICE CLASS

THE NOVICE CLASS IS RESERVED FOR ENTRY-LEVEL CARVERS. SEE PAGE 21.

ENTRY FEES

\$20 First entry, \$10 Each additional entry

Divisions

E—Decorative Floating Lifesize Waterfowl

F—Decorative Lifesize Wildfowl

G—Decorative Miniature Wildfowl

H—Interpretive Wood Sculpture

J—Bench (Intermediate and Novice)

Entries must have been completed since April 30, 2019.

Species list on page 21.

Divisions E, F and G (Species List on page 21)

Entries will be judged on: Technique/Craftsmanship, Accuracy, Essence of the Species, Artistry and Overall Presentation.

1. ADVANCED and INTERMEDIATE entries must be original in design and concept. Work done directly from study birds, published patterns or a classroom project will NOT be considered as original in design and concept. **If after judging it is determined that this policy has been ignored, the award will be rescinded.**

NOVICE carvers will be permitted to enter carvings created from published patterns. Entries created from study birds or classroom projects will not be permitted except in bench. Originality continues to be strongly encouraged.

2. Entries are to be made of wood. Other materials may be used for habitat and structural purposes; however, they are to be hand formed with the exception of eyes.
3. Novice only- Although hand-formed feet and legs are encouraged, novice carvers are permitted to use cast feet and legs.
4. Novice only — Although hand-formed habitat is encouraged, it is not required.
5. Name of the artist should not be visible.

Division E—Decorative Lifesize Floating Waterfowl

1. Entries must be life sized.
2. If the artist enters more than one carving of the same species, both sexes must be represented.
3. Materials other than wood can be used in tails and crests.
4. Entries must float in a natural position but do not have to self-right.
5. Judging will be limited to the waterfowl floating in the tank only.
6. Any deterioration of the paint or structural integrity at the completion of judging will result in the disqualification of the entry.

Division F—Decorative Lifesize Wildfowl

Entries must be life sized.

Division G—Decorative Miniature Wildfowl

Entries must be one half lifesize or less. The Ward Museum reserves the right to move entries deemed too large for miniature to the bench class.

Division H—Interpretive Wood Sculpture

Entries will be judged on craftsmanship, artistry, interpretation of the essence of the wildfowl and originality. A carving should emphasize form, content and movement rather than a realistic duplication of the wildfowl. It should be presented in a style that provokes thought and wonder

1. Subject may be entrant's choice from any wildfowl.
2. Entry is to be entirely of wood with the exception of the base and eyes. The base may be of other material and will be considered as part of the sculpture.
3. If a supporting pedestal under the base is needed, it must be provided by the artist and it will not be considered as part of the sculpture.
4. Interpretive Wood Sculpture entries have no size restrictions.

Division J—Bench (Intermediate and Novice Only)

This division is reserved for the entries that do not meet the rules for any other division. Classroom carvings, group projects with a group leader and carvings from cast study birds are permitted only in this division and should be identified as such. Entries will be divided into four major categories: waterfowl, shorebirds, songbirds and all other wildfowl.

1. Entries must be made of wood or cork. Glass eyes are permitted.
2. Waterfowl entries will not be floated during judging.

THANK YOU TO OUR SPONSORS!

Jack Cox sponsors the Intermediate Division

Dr. Kent Kimmel & Dr. Ruth Carroll
sponsor the Novice Division

AWARDS/ADVANCED

E—Decorative Lifesize Floating Waterfowl

	FIRST	SECOND	THIRD
33 Species	ribbon	ribbon	ribbon
3 Categories	\$100 rosette	\$50 ribbon	\$25 ribbon
Marsh Ducks, Diving Ducks, Geese & Confidence Decoys			
Best in Division	\$400 rosette	\$200 rosette	\$100 rosette

F—Decorative Lifesize Wildfowl

	FIRST	SECOND	THIRD
8 Categories	\$100 rosette	\$50 ribbon	\$25 ribbon

Waterfowl, Shorebirds and Wading Birds, Seabirds, Upland Game Birds, Birds of Prey, NP Land Birds, Songbirds A, Songbirds B

Best in Division	\$400	\$200	\$100
------------------	-------	-------	-------

G—Decorative Miniature Wildfowl

	FIRST	SECOND	THIRD
8 Categories	\$100	\$50	\$25

Waterfowl, Shorebirds and Wading Birds, Seabirds, Upland Game Birds, Birds of Prey, NP Land Birds, Songbirds A, Songbirds B

Best in Division	\$400 rosette	\$200 rosette	\$100 rosette
------------------	------------------	------------------	------------------

H—Interpretive Wood Sculpture

	FIRST	SECOND	THIRD
Best in Division	\$400 rosette	\$200 rosette	\$100 rosette

AWARDS/INTERMEDIATE AND NOVICE

First, second and third place winners at the species level, Intermediate Division E, will receive ribbons. First, second and third in Category (Division E, F, G and J) will receive rosettes with second and third receiving ribbons. First, second and third in Division (Division E, F, G, H and J) will receive rosettes. Best in Show overall will be selected from the Division Winners.

INTERMEDIATE

	FIRST	SECOND	THIRD
Best in Show	\$100 rosette	\$50 rosette	\$25 rosette

NOVICE

	FIRST	SECOND	THIRD
Best in Show	\$100 rosette	\$50 rosette	\$25 rosette

A. DANNER FRAZER YOUTH COMPETITION

DECORATIVE, GUNNING DECOY, SILHOUETTE

THIS COMPETITION IS TO ENCOURAGE YOUTH TO BECOME ENGAGED IN THE ART FORM OF WILDFOWL CARVING, PROVIDE A VENUE TO PRESENT THEIR CARVINGS TO THE PUBLIC AND GIVE THEM THE COMPETITION EXPERIENCE. ENTRIES MAY BE DONE UNDER THE SUPERVISION OF AN ADULT, BUT THE YOUTH MUST DO THE CARVING AND PAINTING. DIVISIONS WILL BE DIVIDED INTO CATEGORIES AND CATEGORIES INTO SPECIES IF THERE ARE THREE OR MORE NUMBER OF ENTRIES.

ENTRY FEES

\$5 Per entry - Sponsored by Gary and Pam Stenger

Division YD - Decorative Wildfowl

Each age group will be judged 1st, 2nd and 3rd Best in Division.

YD1 - 16-17 years of age at time of registration

YD2 - 12-15 years of age at time of registration

YD3 - 11 and under years of age at time of registration

1. Prior entries into World Youth Competition are not permitted.
2. Entries are to be lifesize or less, realistic or interpretive in nature.
3. Decorative Waterfowl will not be floated.
4. Entries must be made of wood. Glass eyes are permitted. Other materials are permitted for habitat and structural purposes. Hand-formed habitat is encouraged but not required.

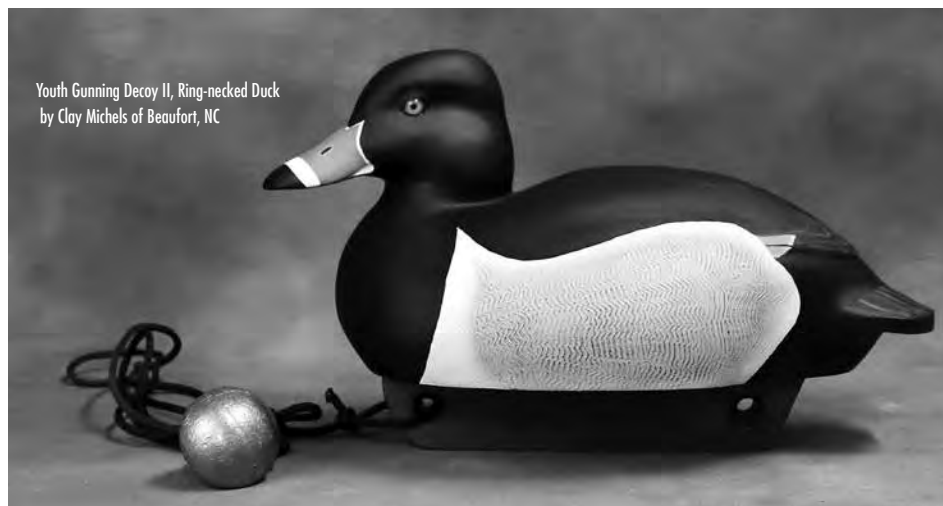
Division - YG Gunning Decoy

Entries will be reviewed for compliance prior to floating. The final judging of entries as gunning decoys shall be conducted while entries are floating on the bay at a minimum distance of 20 feet. Once set, decoys shall remain at anchor for the duration of judging. This division will be divided into three categories: Marsh Ducks; Diving Ducks; and Geese, Swan and Confidence.

YG1 - 15-17 years of age at time of registration

YG2 - 14 and under years of age at time of registration

1. Prior entries into competition at the World Championship are not permitted.
2. Carving should be simplistic without fragile areas. **No highly defined wings or undercut feathers.**
3. **Entries must have 6 feet of line and an anchor.** Decoys will be floated in the bay under natural conditions.
4. Painting should be simplistic. Combing and scratching are permitted.
5. Decoys must self right from any position except geese and confidence decoys which must right from the side.
6. Entries are to be made of wood, cork or stretched canvas; glass eyes are permitted and materials other than wood can be used in fragile tails and crests.
7. If entry is determined to be inappropriate for Gunning Division, it will be transferred to Decorative Division.



Youth Gunning Decoy II, Ring-necked Duck
by Clay Michels of Beaufort, NC

AWARDS/ADVANCED

Best in Division YD1, YD2, YD3, YG1, YG2, YS1, YS2 and YS3 will be on loan to the Ward Museum and exhibited by the Museum for one year.

YD – Decorative Wildfowl: YD1, YD2, YD3

	FIRST	SECOND	THIRD
	Rosette	Rosette	Rosette

Division YG – Gunning Decoy: YG1, YG2

	FIRST	SECOND	THIRD
3 Categories	Rosette	Rosette	Rosette

Best in Division	Rosette Plaque	Rosette	Rosette
------------------	-------------------	---------	---------

Division YS – Silhouette: YS1, YS2, YS3

	First	Second	Third
Silhouette	Rosette Plaque	Rosette	Rosette

THANK YOU TO OUR SPONSORS!

- Entry fees provided by Gary and Pam Stenger
- Silhouette Division supported by the Habbart Dean Memorial Fund
- Awards sponsored by Harry Jackson



Youth Silhouette III
Peep Sanderling
by Cameron Rozzi
of Westover, MD

SPECIAL COMPETITION

SCULPTURE OTHER THAN WOOD

ENTRY FEES / SCULPTURE

\$75 First entry

\$35 Each additional entry

1. Any sculpture that has not been entered into a prior World Championship may be entered into competition.
2. Wildlife sculptures must be original in design and concept and may either be wildfowl or wildlife in subject matter.
3. Sculpture may be lifesize or miniature, realistic or interpretive in nature.

4. Artists may enter more than one sculpture.
5. Sculptures are to be of materials other than wood. A variety of finishing techniques may be utilized.
6. No casting from real wildlife is permitted.
7. Winning artist's piece may, with permission of the artist, be exhibited at The Ward Museum of Wildfowl Art for a specified period of time after the competition if the Ward Museum desires.

AWARDS

Sculpture Division

	FIRST	SECOND	THIRD
Best in Show	\$400 Rosette	\$200 Rosette	\$100 Rosette

A. DANNER FRAZER YOUTH COMPETITION (CONTINUED)

Division YS - Silhouette: Kingfisher

Entries in this division can be done either as a group project or as an individual. One entry per person. Each age group will be judged 1st, 2nd and 3rd Best in Group.

YS1 - 16-17 years of age at time of registration

YS2 - 12-15 years of age at time of registration

YS3 - 11 and under years of age at time of registration

1. Entries are to be made of wood, one inch thick or less and may be lifesize or less in size.
2. Edges may be rounded; wing and bill definition permitted.
3. Glass eyes are permitted.
4. Must be mounted on a simple base with a wood or metal dowel.
5. Entries should be realistically painted.

For more information, please contact Ward Museum Education at 410-742-4988 ext. 110 or Events at ext. 106.

Division YSN - Silhouette Non-Wildfowl:

Terrapin Turtle

Entries in this division can be done either as a group project or as an individual. One entry per person. Each age group will be judged 1st, 2nd and 3rd Best in Group.

YS1 - 16-17 years of age at time of registration

YS2 - 12-15 years of age at the time of registration

YS3 - 11 and under years of age at time of registration

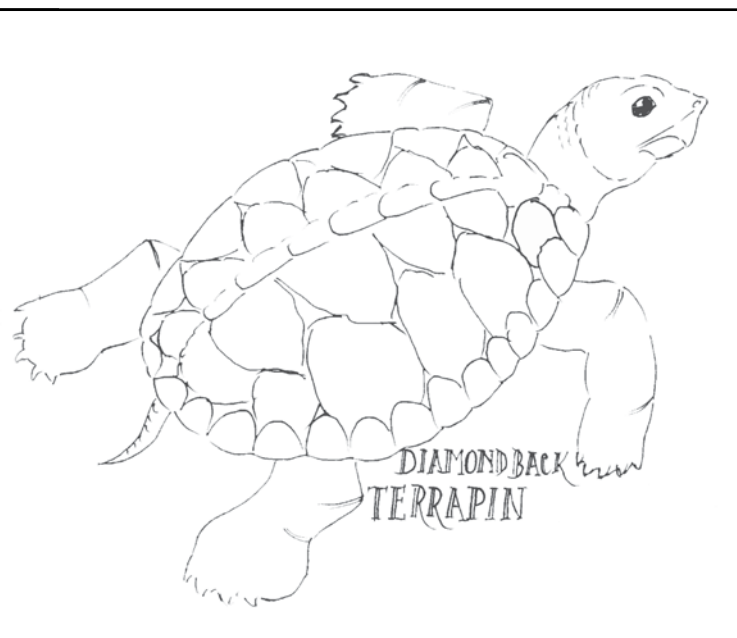
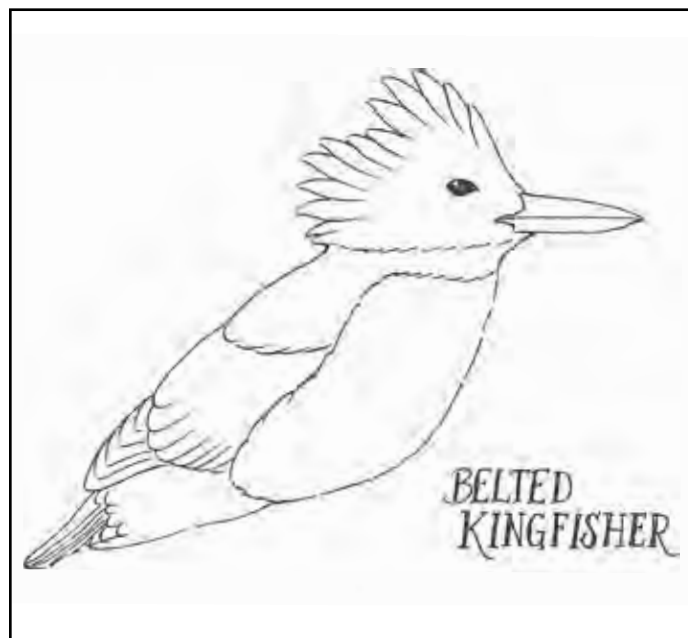
1. Entries are to be made of wood or mixed media, one inch thick or less and may be lifesize or less in size.
2. Edges may be rounded; definition permitted.
3. Glass eyes are permitted.
4. Must be mounted on a simple base with a wood or metal dowel.
5. Entries should be realistically painted.

For more information, please contact Ward Museum Education at 410-742-4988 ext. 110 or Events at ext. 106.

INSTRUCTORS

Register your YOUTH projects ahead!

Email:
wardevents@salisbury.edu



LIVE BIRDS OF PREY DEMONSTRATION

SUNDAY, APRIL 23, 2023

during the Ward World Championship



LEM & STEVE WARD COMPETITION

HUNTING DECOYS

ENTRY FEES

\$35 First entry; \$15 Each additional entry

VIEW THE EVOLUTION OF DECOY CARVING THROUGH THE DIVISIONS OF THE LEM AND STEVE COMPETITION.

Divisions

CA — Contemporary Antiques
CD, CDC — Contemporary Decoys
GP, GPC — Gunning Pair
SD — Shorebird Decoy
JB — Bench

Entries must have been completed since April 30, 2019.

Species list on page 21.

Divisions CD, CDC, GP, GPC - Waterfowl are to be made of wood, cork or stretched canvas; glass eyes are permitted and materials other than wood can be used in fragile tails and crests.

Division CD & CDC — Contemporary Decoy

Entries are modern contest grade decoys, judged on form and function.

This division is divided into two levels, CD and CD Champion (CDC). The rules for each level are the same. CD is open to all except for those who qualify for the Champion level.

The Champion level will be divided into three Categories: Marsh Ducks; Diving Ducks; and Geese, Swan, and Confidence. Anyone who has placed in a World division, competes at the Masters level or has won two best in shows at the World in CD must enter the Champion level. Anyone can choose to enter CDC, but once they have competed at the CDC level they cannot return to the regular CD.

1. Decoys will be floated in the tanks and must self-right from any position, except Geese, Swan and Confidence, which must right only from their side(s). All entries will be judged for stability and proper floatation.
2. Carvings must have sturdy tails and all raised wings must be durable.
3. No burning or fine stoned texturing is allowed. However, simulated texture using gesso, modeling paste, or texture paint in combination with combing, scratching, or brushing is acceptable. Minimal carving techniques used to simulate feather texture on heads, i.e. merganser heads, are acceptable.
4. Painting techniques shall be typical of a modern functional decoy. Entries may include some simple blending of feather edges and internal markings, feather splits, highlighting and hand vermiculation. (Carvings with fully developed decorative painting should be entered into Smoothie Waterfowl.)
5. Any deterioration of the paint or structural integrity at the completion of judging will result in the disqualification of the entry.

Division SG, GP & GPC — Single Gunner and Gunning Pairs

This Division emphasizes simplicity and most resembles the functional tool of the decoy maker. Entries will be reviewed for compliance to rules prior to floating. Thereafter the judges will remain on the judge's platform until judging is complete. The final judging of entries as functional decoys shall be conducted while entries are floating on the bay at a minimum distance of 20 feet. Once set, decoys will remain at anchor for the duration of judging. This division will be divided into two levels, GP and GP Champion (GPC). The rules for each level are the same. GP is open to all except for those who qualify for the Champion level.

The Champion level will be divided into three Categories: Marsh Ducks; Diving Ducks; and Geese, Swan, and Confidence. Anyone who has placed in a World division or competes at the Masters level or has won 2 best in shows in CD or GP **must** enter the Champion level. Anyone can choose to enter GPC, but once they have competed in GPC level they cannot return to the regular GP.

1. Carving and painting should be functional enough to be used as tools for hunting. **NO undercut feathers.**
2. Decoys will be floated and must self-right from any position, except Geese, Swan and Confidence, which must right only from their side(s). All entries will be judged for stability and proper floatation.
3. **Entries must be tandem rigged with 2-3 feet of line between decoys and must have 6 feet of line and a weight. They will be floated in the bay under natural conditions.**
4. Carvings must be hen and drake of the same species and should be life size or over sized with no preference shown by judges. **Exception of Single Gunner.*
5. No burning or fine stoned texturing is allowed. However, simulated texture using gesso, modeling paste, or texture paint in combination with combing, scratching, or brushing is acceptable. Minimal carving techniques used to simulate feather texture on heads, i.e. merganser heads, are acceptable.
6. **Simplicity of painting is required.**
7. Any deterioration of the paint or structural integrity at the completion of judging will result in the disqualification of the entry.

Division CA — Contemporary Antique

Decoys will be judged in hand to include all surfaces and attachments. Contemporary Antique will be divided into 10 categories representing Pristine for antique style pieces which have not been subjected to any field use with minimal wear and patina permitted and Worn for pieces which have received heavy field use in which moderate to severe deterioration is apparent. There will be five categories each for Pristine and Worn: Marsh Ducks, Diving Ducks, Geese and Confidence, Shorebirds and All Others.

1. **Entries can be inspired by old decoys from geographic areas but must be the carver's original design and interpretation of an 'old' decoy.**
2. Entries will be a **single** decoy. Multiple birds, waterfowling memorabilia and "copies" are not permitted.
3. All entries must be signed and dated.
4. Decoys should be made to look old by the manner in which they are carved, painted and finished.
5. Shorebirds and Wading Birds must be mounted on a dowel and have simple base.

Division SD — Shorebird Decoy

Entries are contemporary shorebird decoys that emphasize simplicity of line and paint. The division is divided into seven categories. Please check Species List on page ? for accepted species.

1. Entries will be a **single** decoy constructed of either wood or cork with no preference shown by the judges.
2. Separation between wings and tail is permitted providing both are durable.
3. Simplicity of painting is required.
4. Must be mounted on a simple base with a wood or metal dowel. **Exception Single Gunner may be either sex*

Division JB — Bench

This division is reserved for the entries that do not meet the rules for any other division. Classroom carvings, group projects with a group leader and carvings from CAST STUDY BIRDS ARE permitted

in this division. Entries will be divided into four categories: waterfowl, shorebirds, songbirds, and all other wildfowl.

1. Entries must be made of wood or cork. Glass eyes are permitted.
2. Waterfowl entries will not be floated during judging.
3. Entries will not be considered as gunning decoys, therefore may be textured.

AWARDS

Best in Division in CDC, GPC, CA and SD will be on loan to the Ward Museum and exhibited by the Museum for one year.

CD — Contemporary Decoy

	FIRST	SECOND	THIRD
31 Species	ribbon	ribbon	ribbon
3 Categories	rosette	rosette	rosette
Best in Division	rosette	rosette	rosette

CDC — Contemporary Decoy Champion

	FIRST	SECOND	THIRD
3 Categories	rosette	ribbon	ribbon
Best in Division	\$400 rosette	\$200 rosette	\$100 rosette

SG — Single Gunner

	FIRST	SECOND	THIRD
31 Species	ribbon	ribbon	ribbon
3 Categories	rosette	rosette	rosette
Best in Division	\$150 rosette	\$100 rosette	\$50 rosette

GP — Gunning Pairs

	FIRST	SECOND	THIRD
31 Species	ribbon	ribbon	ribbon
3 Categories	rosette	rosette	rosette
Best in Division	\$300 rosette	\$200 rosette	\$100 rosette

GPC — Gunning Pairs Champion

	FIRST	SECOND	THIRD
3 Categories	rosette	ribbon	ribbon
Best in Division	\$400 rosette	\$200 rosette	\$100 rosette

CA — Contemporary Antique

	FIRST	SECOND	THIRD
10 Categories	rosette	ribbon	ribbon
Best in Division	\$300 rosette	\$200 rosette	\$100 rosette

SD — Shorebird Decoy

	FIRST	SECOND	THIRD
7 Categories	rosette	ribbon	ribbon
Best in Division	\$300 rosette	\$200 rosette	\$100 rosette

JB — Bench

	FIRST	SECOND	THIRD
4 Categories	rosette	ribbon	ribbon
Best in Division	rosette	rosette	rosette

DECORATIVE SMOOTHIE

This competition challenges the artist to capture the essence of the species via form and paint. Only the bird will be judged, feet and habitat will not be taken into consideration. Entries are non-textured carvings done to the artist's highest abilities. The carving will be judged for the likeness and essence of species and artistry. SW and SS are to be lifelike. Only the Champagne Waterfowl Divisions will be floated.

Divisions

SW, SWC — Decorative Smoothie Waterfowl
 SS — Decorative Smoothie Shorebirds and Wading Birds
 CW, CWC — Champagne Waterfowl Division
 Entries must have been completed since April 30, 2019.
Species list on page 21.

Division SW & SWC — Decorative Smoothie Waterfowl

This division will be divided into two levels, SW and SW Champion (SWC). The rules for each are the same. SW is open to all except those who must enter SW Champion.

The Champion level will be divided into three categories: Marsh Ducks; Diving Ducks; and Geese, Swan and Confidence. Anyone may choose to enter the Champion level, but anyone who has placed in a World Division, competes at the Masters or CD Champion level, or has won two best of divisions in Decorative Smoothie Waterfowl must enter the Champion level.

1. Entries will be a **single** decoy made of wood; glass eyes are permitted and materials other than wood can be used in fragile tails and crests.
2. Entries can either be flat bottomed or have a keel. Preference will not be given to either by the judges.
3. Sturdy tails are not required. Realism and creative postures are encouraged.
4. Decorative painting to the artist's highest ability, i.e. barbles, translucence and shading are encouraged.
5. No burning, **stoning** or fine texturing is allowed.
6. Groups of feathers can be defined, i.e. tertials, scapulars, sidepockets, etc.

Division SS - Decorative Smoothie Shorebirds and Wading Birds

1. Entries must be made of wood. Glass eyes are permitted.
2. Realism and creative postures are encouraged.

3. Decorative painting to the artist's highest ability is encouraged.
4. No burning or fine texturing is allowed.
5. The name of the species must be written on the bottom of the base.
6. Groups of feathers can be defined.

Division CW & CWC - Floating — Champagne Waterfowl Division

Entries will be divided into four categories: Marsh Ducks, Diving Ducks, Geese, Swan and Confidence and Pelagic and Coastal Seabirds. This division will be divided into two levels, CW and CW Champion. The rules for each are the same. CW is open to all except those who must enter CW Champion. Anyone can choose to enter the Champion level, but anyone who has placed in a World Division; competes at the Masters, CD or SW Champion level; or has won two best of divisions in Champagne Waterfowl must enter the Champion level. Once a person has entered CWC, they are not eligible to return to CW.

1. Entries must fit within a 3 1/2 inch circle.
2. Entries must **float** properly but do not have to self-right.
3. Entries can be either flat bottom or with a keel; the judges will not give preference to either.
4. Entries must be smooth. Groups of feathers can be defined, i.e. tertials, scapulars, side pockets, etc. No texturing is allowed.
5. There are no restrictions on paint.

Division NCW & NCWC - Non-Floating — Champagne Wildfowl Division

Entries will be divided into categories: Songbirds, Raptors, Shorebirds, and Water birds and perching birds **excluding ducks and geese**. This division will be divided into two levels, NCW and NCW Champion. The rules for each are the same. NCW is open to all except those who must enter NCW Champion. Anyone can choose to enter the Champion level, but anyone who has placed in a World Division; competes at the Masters, CD or SW Champion level; or has won two best of divisions in Champagne Waterfowl must enter the Champion level. Once a person has entered NCWC, they are not eligible to return to NCW.

1. Entries must fit within a 3 1/2 inch circle.
2. Entries should be in realistic positions with feet. May be mounted on bases to enhance sculptural effects; the judges will not give preference to either.
3. Entries must be smooth. Groups of feathers can be defined, i.e. tertials, scapulars, side pockets, etc. No texturing is allowed.
4. There are no restrictions on paint.
5. Entries **DO NOT** need to float.

AWARDS

Best in Division in SWC, SS, CW and CWC will be on loan to the Ward Museum and exhibited by the Museum for one year.

SW — Decorative Smoothie Waterfowl

	FIRST	SECOND	THIRD
31 Species	ribbon	ribbon	ribbon
3 Categories	rosette	rosette	rosette
Best in Division	rosette	rosette	rosette

SWC — Smoothie Waterfowl Champion

	FIRST	SECOND	THIRD
3 Categories	rosette	ribbon	ribbon
Best in Division	\$400 rosette	\$200 rosette	\$100 rosette

SS — Decorative Smoothie Shorebirds and Wading Birds

	FIRST	SECOND	THIRD
10 Categories	rosette	ribbon	ribbon
Best in Division	\$400 rosette	\$200 rosette	\$100 rosette

CW & NCW Floating & Non-Floating

	FIRST	SECOND	THIRD
4 Categories	rosette	ribbon	ribbon
Best in Division	\$800* rosette	\$250 rosette	\$100 rosette

CWC & NCWC Floating & Non-Floating

	FIRST	SECOND	THIRD
4 Categories	rosette	ribbon	ribbon
Best in Division	\$800* rosette	\$250 rosette	\$100 rosette

* Purchase Award

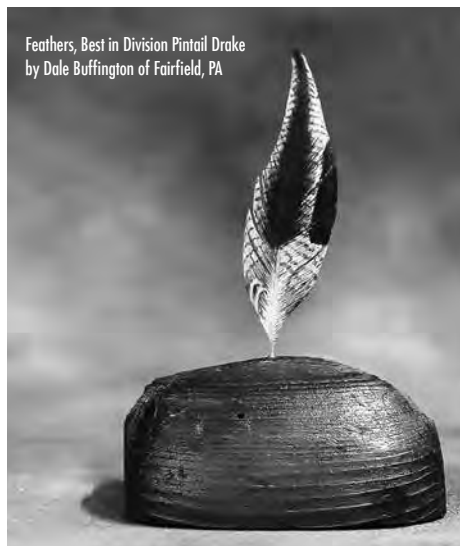
THANK YOU TO OUR SPONSORS!

- Midshore Chapter of Delta Waterfowl sponsors the Single Gunner Division.
- Sharp Gas and Energy sponsors the Contemporary Antique Division.
- Chincoteague Decoy Carvers & Artists Association sponsors the Gunning Pairs Division.
- Lew and Nancy Pearce sponsor the Champagne Divisions in memory of her father, who introduced them to the Ward Museum and wildfowl carving. Note that prize values have increased, thanks to the generosity of the Pearces!
- Captain Tommy Cornicelli sponsors Gunning Pairs Champion.

Champagne Fish, Best in Division, Saltwater Pigfish by John of Harlow Cheriton, CA



SPECIAL COMPETITION



Feathers, Best in Division Pintail Drake
by Dale Buffington of Fairfield, PA

FEATHER AND FRONDS COMPETITION

ENTRY FEES / SCULPTURE

\$50 First entry
\$35 Each additional entry

Division Feather

1. Use means and materials that would provide a lifelike feather, provided that the feather itself is made out of wood.
2. The quill, shaft and down can be painted to emulate the feather you are representing.
3. PLEASE DO NOT BRING YOUR MODEL FEATHER.

Division Fronds

1. Major portion of entry must be made of palm frond.
2. The challenge is to portray the "essence of species" of your subject while retaining as much of the character of the palm frond as possible.
3. Palm fronds will be judged on the table.

AWARDS

Feather Division

	FIRST	SECOND	THIRD
Best in Show	\$400 rosette	\$200 rosette	\$100 rosette

Fronds Division

	FIRST	SECOND	THIRD
Best in Show	\$400 rosette	\$200 rosette	\$100 rosette

FISH CARVING COMPETITION

ENTRY FEES

Open

\$35 First entry
\$20 Each additional entry

Intermediate

\$25 First entry
\$10 Each additional entry

Novice

\$15 First entry
\$5 Each additional entry

Youth

No Entry Fee

Division CFD and NCFD

\$35 First entry
\$15 Each additional entry

OPEN/ADVANCED, INTERMEDIATE & NOVICE

1. OPEN/ADVANCED and INTERMEDIATE entries must be original in design and concept. Work done directly from study fish, published patterns or as a classroom project will not be considered as original in design and concept. If after judging it is determined that this policy has been ignored, the award will be rescinded.
2. NOVICE carvers will be permitted to enter carvings created from published patterns; however, entries created from study fish or classroom projects will not be permitted. While use of published patterns at the NOVICE level is permitted, originality continues to be strongly encouraged.
3. Carvers may enter at only one level—Open/Advanced, Intermediate or Novice. Carvers entering both Fish and Wildfowl competitions must enter at the same skill level.
4. Entries are to be made of wood in all Divisions. Other materials are permitted for habitat and structural purposes; however, they are to be hand formed with the exception of eyes.
5. Entries under glass may be permitted if the glass is removable by the carver for judging.
6. Name of artist should not be visible.
7. Interpret category includes natural finish and follows the guidelines of Interpretive Wood Sculpture in the wildfowl divisions. It should be in a style that provokes thought and wonder.

Division CFD - Fish Decoy/Lure:

Champagne Fish Division

Entries will be divided into categories: Fresh Water and Salt Water. The rules for each are the same. CFD is open to all.

1. Entries must fit within a 3 1/2 inch circle.
2. Entries should be in realistic.
3. Entries must be smooth. Anatomical features can be defined. No texturing is allowed, exception for fins.
4. There are no restrictions on paint.
5. Entries DO NOT need to float.

Division NCFD - Fish Decoy/Non-Floating: Champagne Fish Division

Entries will be divided into categories: Fresh Water and Salt Water.

The rules for each are the same. NCFD is open to all.

1. Entries must fit within a 3 1/2 inch circle.
2. Entries should be in realistic. May be mounted on bases to enhance sculptural effects; the judges will not give preference to either.
3. Anatomical features can be defined. Texturing is encouraged.
4. There are no restrictions on paint.
5. Entries DO NOT need to float.

The Ward Foundation follows Breakthrough Magazine's Fish Carving Competition rules. For complete rules:
<http://breakthroughmagazine.com>

AWARDS

OPEN/ADVANCED

	FIRST	SECOND	THIRD
Lifesize	rosette \$175	rosette	rosette
Miniature	rosette \$125	rosette	rosette
Interpret	rosette \$75	rosette	rosette
Freestyle	rosette \$75	rosette	rosette

INTERMEDIATE

	FIRST	SECOND	THIRD
Lifesize	rosette \$125	rosette	rosette
Miniature	rosette \$75	rosette	rosette
Interpret	rosette \$50	rosette	rosette

NOVICE

	FIRST	SECOND	THIRD
Lifesize	rosette \$50	rosette	rosette
Miniature	rosette \$25	rosette	rosette
Interpret	rosette \$25	rosette	rosette

YOUTH

	FIRST	SECOND	THIRD
3 Categories	rosette	rosette	rosette

CHAMPAGNE FISH CFD & NCFD

	FIRST	SECOND	THIRD
2 Categories	rosette	rosette	rosette
Best in Division	\$250*	rosette	rosette

* Purchase Award

Best in Show will be selected from the winner of each of the two Open/Advanced Divisions. Second in Show will be selected from the remaining Division winners along with the Second of the Division previously selected. Third will be selected from the remaining First in Division winner plus the next runner up of the Division(s) previously selected. In other words, it is possible to select First, Second and Third in Show from one Division.

OPEN CARVING COMPETITION

OPEN CATEGORY

- Two Divisions Open Carving Lifesize and Open Carving Miniature

5 Categories in Each Division

- Human Forms
- Animals other than birds or fish (fish includes water mammals)
- Reliefs
- Chip Carving
- Other Carvings

1. Entries will be judged on: Technique/Craftsmanship, Accuracy, Essence of subject/species, Artistry, and Overall Presentation
2. Entries must be original in design and concept. Work done directly from study of subject, published patterns or classroom projects will not be considered as original in design and concept. If after judging it is determined that this policy has been ignored, the award will be rescinded. Entries created from a work of fiction or mythological belief are allowed, but must be original in design and concept.
3. Entries are to be made of wood. Other materials may be used for habitat and structural purposes; however, they are to be hand formed with the exception of eyes in the carving.
4. Name of artist should not be visible.
5. For Miniature: Entries must be one half lifesize or less. The Ward Foundation/Floor Captains reserves the right to move entries deemed too large for miniature.

COLLECTOR'S CORNER

This is your chance to show off your favorite collectible decoy and win a ribbon. Bring your favorite decoy made prior to 1950 that fits the categories below. Decoys will be judged by judges and the public.

Categories

- Atlantic Flyway
- Mississippi Flyway
- Central Flyway
- Pacific Flyway
- Allegheny Front Flyway
- East Atlantic Flyway
- Black Sea-Mediterranean Flyway
- Asian-East African Flyway
- Central Asian-Indian Flyway
- East Asian-Australasian Flyway
- West Pacific Flyway

DIVISION C1 CHAMPAGNE INTERPRETIVE

Entries will be judged on artistry, interpretation of the essence of the wildfowl and originality. A carving should emphasize form, content and movement rather than a realistic duplication of the wildfowl. It should be presented in a style that provokes thought and wonder. Natural finish ONLY.

1. Entries must fit within a 3 1/2 inch circle, this includes the base.
2. Subject may be entrant's choice from any wildfowl.
3. Entry is to be entirely of wood with the exception of the structural elements. The base may be of other materials and will be considered as part of the sculpture. There must be no or minimal assembly required when the carving arrives at the museum for staff to assemble.
4. If a supporting pedestal under the base is needed, it must be provided by the artist and it will not be considered part of the sculpture. If included, it must require only simple assembly, and instructions must be provided. Must also fit in the 3 1/2 inch circle/cylinder (Height limit of 7 inches tall).



AWARDS

OCL- Open Carving Best in Division Lifesized

FIRST	SECOND	THIRD
rosette	rosette	rosette

Best in Each Category

FIRST	SECOND	THIRD
ribbon	ribbon	ribbon

5 Categories

OCM- Open Carving Best in Division Miniature

FIRST	SECOND	THIRD
rosette	rosette	rosette

Best in Each Category

FIRST	SECOND	THIRD
ribbon	ribbon	ribbon

5 Categories

AWARDS CHAMPAGNE INTERPRETIVE

Best in Division
50/50 auction split*
rosette

Second in Division
rosette

Third in Division
rosette

*Purchase Award



WE NEED YOU!

VOLUNTEER AT THE WORLD CHAMPIONSHIP

We simply couldn't do this event without the incredible team of 150+ volunteers! Sign up today to help with registration, judging, education, hospitality, set-up and much more.

SIGN UP TO VOLUNTEER BY FEBRUARY 28, 2023 AND RECEIVE A FREE COMMEMORATIVE 2023 WORLD CHAMPIONSHIP ENAMEL PIN

Call 410-742-4988 ext. 105 or
email wardvolunteers@salisbury.edu
for more info

OFFICIAL SPECIES DESIGNATIONS

DIVISIONS CD, SW AND GP-CONTEMPORARY DECOY, DECORATIVE SMOOTHIE WATERFOWL AND GUNNING PAIR

Marsh Ducks

Black Duck
Blue-winged Teal
Cinnamon Teal
Gadwall
Green-winged Teal
Mallard
Northern Pintail
Shoveler
Wigeon
Wood Duck
All Other

Diving Ducks

Bufflehead
Canvasback
Common Merganser
Eiders
Goldeneyes
Hooded Merganser
Long-tailed Duck
Red-breasted Merganser
Redhead
Ring-necked Duck
Ruddy Duck
Scaup
Scoters
All Other

Geese, Swan & Confidence

Brant
Coot
Geese
Grebes
Swan
Confidence and all others

DIVISION SS - SMOOTHIE SHOREBIRD & WADING BIRDS

1. Avocet, Oystercatchers, Stilt
2. Curlew, Whimbrel, Godwits
3. Dowitchers, Knots, Dunlins
4. Phalaropes, Woodcock, Snipe
5. Plovers
6. Yellowlegs, Red and Green Shank, Solitary Sandpiper
7. Small Sandpipers (under 9")
8. Large Sandpipers, Willets, Turnstones
9. Egrets, Herons
10. All Other Waders & Shorebirds

DIVISION SD - SHOREBIRD DECOY

1. Avocet, Oystercatcher, Stilt
2. Curlew, Whimbrel, Godwits
3. Plovers
4. Yellowlegs/Willet
5. Peeps
6. Turnstone, Dowitchers & Knots
7. Egrets & Heron

DIVISION E - DECORATIVE LIFESIZE FLOATING WATERFOWL

Marsh Ducks

Black Duck
Blue-winged Teal
Cinnamon Teal
Gadwall
Green-winged Teal
Mallard
Northern Pintail
Shoveler
Wigeon
Wood Duck
All other

Diving Ducks

Bufflehead
Canvasback
Common Merganser
Eiders
Goldeneyes
Hooded Merganser
Long-tailed Duck
Red-breasted Merganser
Redhead
Ring-necked Duck
Ruddy Duck
Scaup
Scoters
All other

Geese, Swan & Confidence

Brant
Canada Goose
All other Geese
Swan
Coot
Grebes
Loons
All Other

DIVISIONS F AND G- DECORATIVE LIFESIZE WILDFOWL / DECORATIVE MINIATURE WILDFOWL

Waterfowl

Ducks
Geese
Swans

Shorebirds & Wading

Birds

Avocet
Coot
Cranes
Curlew
Egrets
Flamingo
Gallinules

Godwits
Hérons
Ibises
Knots
Limkins
Oystercatchers
Phalaropes
Plovers
Rails
Sandpipers
Snipe
Spoonbill
Stilt
Stork
Turnstones
Whimbrel
Woodcock
Yellowlegs

Upland Game Birds

Grouse
Guineafowl
Partridge
Peafowl
Pheasant
Ptarmigan
Quail
Turkeys

Birds of Prey

Caracaras
Eagles
Falcons
Hawks
Kites
Ospreys
Owls
Vultures

Pelagic & Coastal Seabirds

Albatrosses
Anhingas
Auks
Boobies
Cormorants
Frigatebirds

Gannets
Grebes
Gulls
Jaegers
Loons
Pelicans
Penguins
Petrels
Puffins
Shearwaters
Skimmers
Skuas
Terns
Tropicbirds

Non-Passerine Land Birds

Anis
Barbets
Bee-eaters
Cuckoos
Doves
Goatsuckers
Hoopes
Hornbills
Hummingbirds
Kingfishers
Parrots
Pigeons
Roadrunners, Swifts,
Toucans, Trogons
Woodpeckers
South American and Old
World Sub-Oscine Passerines

Songbirds A - Oscine Passerines

Birds of Paradise
Bluebirds
Bowerbirds
Catbirds
Chats
Chickadees
Creepers
Crows
Dippers
Flycatchers

Gnatcatchers
Jays
Kinglets
Larks
Magpies
Mockingbirds
Nuthatches
Pipits
Robins
Shrikes
Swallows
Thrashers
Thrushes
Titmice
Vireos
Wagtails, Warblers
Waxwings
Wrens

Songbirds B -

Oscine Passerines
Blackbirds
Bobolinks
Buntings
Cardinals
Cowbirds
Crossbills
Finches
Grackles
Grosbeaks
Juncos
Meadowlarks
Orioles
Redpolls
Sparrows
Starlings
Tanagers
Towhees

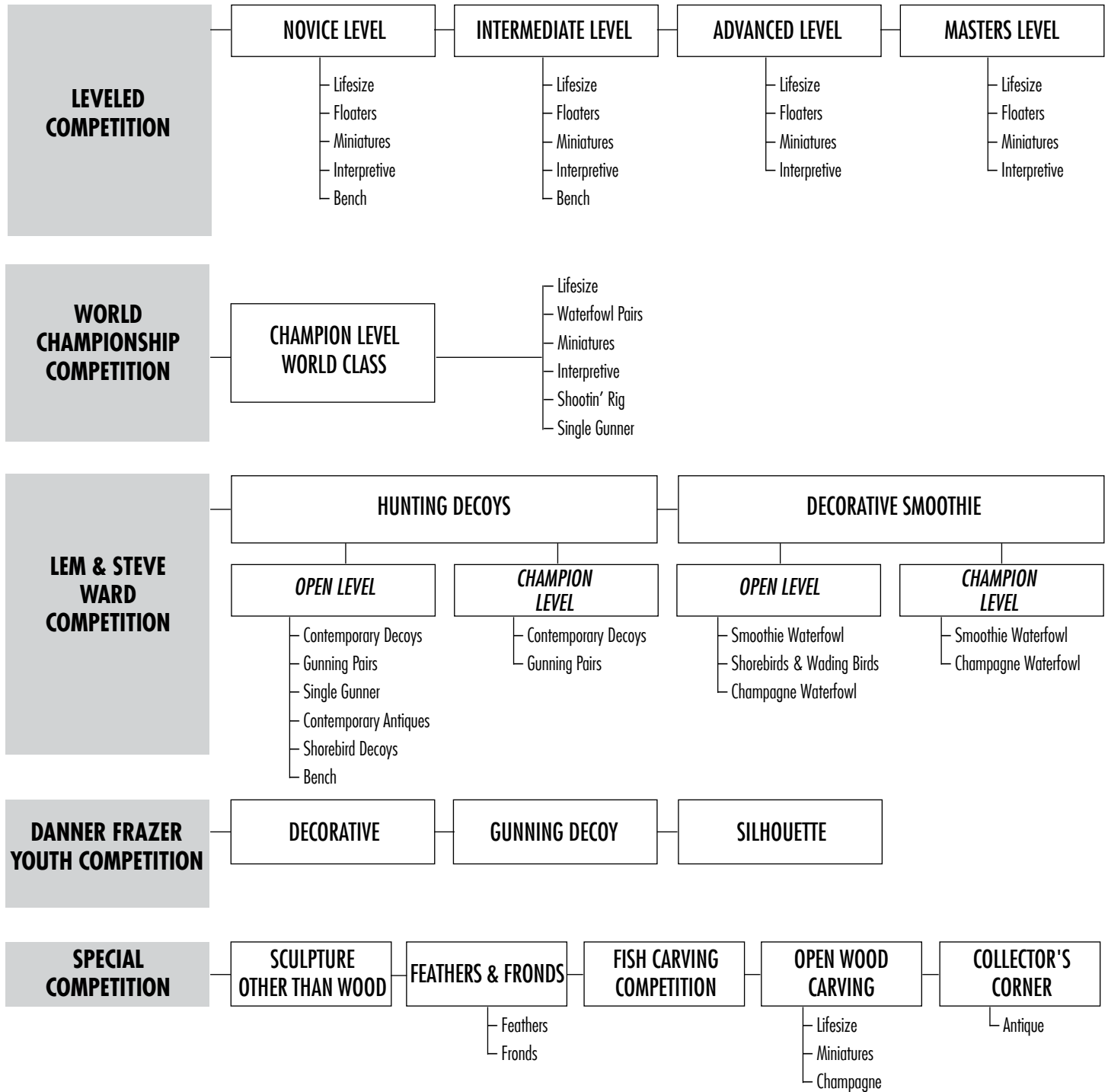
MAJOR CHANGES LISTED ON THE CENTER FOLD OF THIS GUIDE

Look for ★ symbol throughout the guide that will indicate any major rule changes, additions or clarifications.

Significant Changes or Clarifications

- Award Ceremony, page 10
- Benefit Auction, pages 10 and 22
- World Single Gunner - WG, pages 12-13
- Single Gunner - SG, page 17
- Open Carving Competition, page 20
- Antique Competition, page 20

WARD WORLD WILDFOWL COMPETITION DIAGRAM



MEMORIAL AWARDS

For additional information visit: www.wardmuseum.org

- **Dr. John P. Trabuchi Memorial Award**
Intermediate Decorative Life-size Floating Waterfowl, Best Diver
- **William Schultz Memorial Award**
Intermediate Decorative Life-size Wildfowl, Best in Waterfowl Category
- **Richard "Dick" LeMaster Memorial Award**
Intermediate Decorative Life-size Floating Waterfowl, Best in Species Mallard Hen

- **Mike Wavercak Memorial Award**
Intermediate Decorative Life-size Floating Waterfowl, Best in Species Bufflehead
- **Robert "Bob" Guge Memorial Award**
Novice Decorative Life-size Wildfowl, Best Songbird

LIVE BENEFIT ART AUCTION

Saturday, April 22 • 2 p.m.

This is your chance to own a piece of art crafted by a world-famous artist! Bid on items such as hand-carved wildlife art, bronze sculptures and more. Now accepting art for consignment. Art must fit specific criteria.

Call us today at 410-742-4988, ext. 120, or bring us your item(s) on Thursday, April 20, 11 a.m.- 8 p.m.

ACCOMMODATING FRIENDS

Please support the hotels and motels that support us! Identify yourself as an attendee of the 2023 Ward Wildfowl Carving Competition to ensure any special rates which may be available. Early reservations are suggested. All rates are based on availability and may not include applicable taxes. Please call or visit the hotels' websites for current rates. Additional visitor information is available from the Ocean City Convention & Visitors Bureau under the Town of Ocean City Dept. of Tourism: 1-800-OC-OCEAN, www.ococean.com.

Aloft Ocean City
4501 Coastal Highway
Ocean City, MD 21842
443-373-0800

Barefoot Mailman Motel
#16 35th St. Oceanside
Ocean City, MD 21842
410-289-5343 • 800-395-3668

Best Western Ocean City Hotel & Suites
5501 Coastal Highway
Ocean City, MD 21842
443-664-4001 • 866-664-4004

Burgundy Inn Hotel
1210 Philadelphia Avenue
Ocean City, MD 21842
800-428-1108

Cambria Hotel Ocean City – Bayfront
13 St Louis Avenue
Ocean City, MD 21842
410-289-1645

Castle in the Sand Hotel
3701 Atlantic Avenue
Ocean City, MD 21842
410-289-6846 • 800-552-7263

Clarion Resort Fontainebleau Hotel – Oceanfront
10100 Coastal Highway
Ocean City, MD 21842
410-524-3535

Coastal Palms Beach Hotel
120th St. Ocean Block
Ocean City, MD 21842
410-289-6846 • 800-552-7263

Comfort Inn Gold Coast
112th St. & Coastal Highway
Ocean City, MD 21842
410-524-3000 • 800-228-5150

Country Inn & Suites by Radisson
12303 Coastal Highway
Ocean City, MD 21842
410-250-1900 • 800-552-7263

Days Inn Oceanfront
23rd St. & Boardwalk
Ocean City, MD 21842
410-289-9103 • 800-926-1122

Dunes Manor Hotel
2800 Baltimore Avenue
Ocean City, MD 21842
410-289-1100 • 800-523-2888

Fairfield Inn & Suites Ocean City
2501 Philadelphia Avenue
Ocean City, MD 21842
410-289-5000 • 800-228-2800

Grand Hotel & Spa
2100 Baltimore Avenue
Ocean City, MD 21842
410-289-6191 • 800-447-6779

Hilton Suites
3200 N. Baltimore Avenue
Ocean City, MD 21842
410-289-6444 • 866-729-3200

Holiday Inn Oceanfront
67th St. & the Ocean
Ocean City, MD 21842
410-524-1600 • 800-638-2106

Paradise Plaza Inn
3 9th St. 9th St. & Boardwalk
Ocean City, MD 21842
410-289-6381 • 888-678-4111

Park Place Hotel
207 N Atlantic Avenue
Ocean City, MD 21842
410-289-6440 • 888-212-7275

Princess Bayside Beach Hotel
48th St. & Coastal Highway
Ocean City, MD 21842
410-723-2900 • 800-854-9785

Princess Royale Resort and Conference Center
9100 Coastal Highway
Ocean City, MD 21842
410-524-7777 • 800-4-ROYALE

Quality Inn Oceanfront
54th St. & the Ocean
Ocean City, MD 21842
410-524-7200 • 800-837-3586

Residence Inn by Marriott Ocean City
61st St. & Bay
Ocean City, MD 21842
410-732-2222 ext. 5009

Sea Bay Hotel
102 60th St. & Coastal Highway
Ocean City, MD 21842
410-524-6100 • 800-888-2229

Spinnaker Motel
18th St. & Baltimore Avenue
Ocean City, MD 21842
410-289-5444 • 800-638-3244

Talbot Inn
311 Talbot St.
Ocean City, MD 21842
410-289-9125 • 800-659-7703

Tidelands Caribbean Hotel & Suites
409 Atlantic Avenue
Ocean City, MD 21842
410-289-9455

MAIL-IN ENTRIES FOR LEM & STEVE, YOUTH, AND SPECIAL COMPETITIONS

For international artists and competitors please check with U.S. Customs before shipping. The Ward Foundation is not responsible for any loss or damage to mail-in entries.

MAIL TO:

Ward Museum, Attn: Events Department,
909 S. Schumaker Dr., Salisbury, MD 21804

DEADLINE:

Must be received by April 15, 2023.

- Entrants must pre-pay with credit card, check or money order:
 - Shipping, including a pre-paid, return-postage, shipping label with insurance. Record tracking numbers for your own records.
 - \$5 handling fee per box** (not per entry). Fee not required for youth entries.
 - Entry fees, including membership or \$10 non-membership fee.
- Entrants must complete registration form(s).
 - You may download a sample form from www.wardmuseum.org or call 410-742-4988, ext. 106.
 - The sample form is not an official registration form.** Your entry will be registered by the competition registrar.
 - Complete the sample form ensuring all information, including entry fees, is correct.
 - Enclose payment with the correct totals. Carvings mailed without full payment will not be entered.
 - You must sign the sample form to authorize registration of your entries and compliance with all rules, guidelines and waivers.
 - Make a copy of your filled-out, sample registration form for your own records.
 - In an envelope, enclose the completed registration form(s) as well as your payment and return postage label. Put the envelope in the shipping box with your carving(s).
- Carvings will be shipped to the owners no later than two weeks after the competition. Arrival times will vary depending on your distance from Salisbury, MD.
- If you or your agent will be picking up your carving at the show closing (Sunday, 4 p.m.), please provide instructions along with your sample registration form.
- Packing Recommendations:** The following is based on recommendations of USPS, UPS and Federal Express to ensure the utmost safety for your carvings.
 - Use a rigid corrugated box large enough for carving(s) and cushioning materials.
 - Wrap each carving separately using proper cushioning material such as bubble wrap.
 - Each carving should be surrounded by at least two inches of cushioning and be placed at least two inches from inside wall of box. Use peanuts or foam for loose fill to avoid shifting.
 - Enclose envelope with sample form, fee payments, and return postage label.
 - Seal box securely with packing tape.
- Mail in box.

Please No Stamps

Special Thanks

The Ward Foundation gratefully acknowledges the support of the hotels and motels who have generously donated rooms for the World Championship judges and Ward Foundation special guests and staff.

Dux' Dekes Decoy Company

Since 1987, producing the finest carving blanks on the market today. Ducks, geese, loons, shorebirds, songbirds, raptors, upland game, wading birds and gunners. We are now offering tupelo in our Premier blanks, along with select shorebirds, upland gamebirds, songbirds and raptors. You'll not find a wider, more diverse, high quality selection of blanks anywhere.



800-553-4725
www.duxdekes.com
1356 North Rd.
Greenwich, New York, 12834

Castle IN THE Sand HOTEL

SUITES • EFFICIENCIES • CONDOS • ROOMS • COTTAGES

- Coconuts Beach Bar & Grill
- Beach House Restaurant
- Take A Dip Ice Cream Shop
- Olympic Pool & Diving Board
- Beach Equipment Rentals
- Free Children's Activities
- Free Wireless Internet
- Wait Service on the Beach
- Live Music on Coconuts Patio
- Meeting Room
- Senior Citizen Rates
- Hot Deals & Discount Rates

Come stay in our Castle by the sea,
where we treat you like Royalty!



Always your best rate when booking
by phone or on our website!



Oceanfront at 37th Street
410/289-6846 • 800/552-SAND
www.castleinthesand.com

Krausman's Wildlife Reference Photos & Woodcarving Studio



Pamyla L. Krausman
James M. Krausman

1750 S. County Rd. 557
Gwinn, Michigan 49841
Toll Free 1-877-572-8762
www.referencephotos.com

Curt's Waterfowl Corner



*...where personal attention makes
every carver feel like a champion!*



Complete Line of Quality Art & Carving Supplies

The Best Tupelo Gum!

Air dried and cut to order! Also, song and shorebird
sizes and cut outs, your patterns or ours!

**WE TAKE PRIDE IN THE
SELECTION & CUTTING
OF YOUR WOOD**

We at Curt's are glad to announce that we will
again be selling our Tupelo Wood from our trailer
parked outside of the main entrance of the
Convention Center – Driving up with a batch of
wood for this event – A super show for all –
Tell your friends about us.

The Fabre family. . .

4033 Country Dr. • Bourg, LA 70343
985-580-3014 • Fax 985-851-2328
Toll Free 800-523-8474 (orders)
Curtis J. Fabre, Proprietor

J. Millard Tawes Historical Museum & the Original Ward Brothers Workshop



Visit the Museum at
3 Ninth Street,
Crisfield, MD.

See the collection of Decoys and other Heritage artifacts.



*Open April 21-22
10 a.m.-2 p.m.*



Visit the Original Ward
Brothers Workshop at
3195 Sackertown Rd.,
Crisfield, MD.

CRISFIELD HERITAGE FOUNDATION • CALL 410-968-2501 FOR INFORMATION



WWW.CRISFIELDHERITAGE.ORG • CRISFIELDHERITAGEFON@GMAIL.COM

MDI Woodcarvers Supply

PO Box 4, Pittsfield, Maine 04967

For Free Printed Catalog Call
800-866-5728

Order online at mdiwoodcarvers.com

*Are you looking for Low Prices with
Fast Service?*

*No Need For Rocket Science
to Figure This One Out.*



THE WARD FOUNDATION PRESENTS THE

2023 BENEFIT ART AUCTION



A LIVE AUCTION OF WORLD-CLASS ART TO
SUPPORT THE WARD FOUNDATION, INC.

SATURDAY, APRIL 22, 2023
2:00 PM

PERFORMING ARTS CENTER
OC CONVENTION CENTER

DURING THE WARD WORLD
CHAMPIONSHIP WILDFOWL
CARVING COMPETITION & ART FESTIVAL

COMPLETE oceanfront getaway...
the only thing missing is YOU!



www.grandhoteloceancity.com

Home of the Living Legends Dinner – Discount Hotel Accommodations Available



OCEANFRONT HOTEL ON THE BOARDWALK FEATURES:

- 251 Deluxe Guest Rooms with Spectacular Ocean Views, Each Equipped with Microwaves, Mini Refrigerators, Coffee Makers, Irons and Ironing Boards, Spacious Balconies
- Complimentary Wi-Fi | 100% Smoke Free Guest Rooms
- Indoor Pool and Outdoor Pool with Sun Deck & Pool Bar*
- Fitness Center & Acqua Day Spa
- Family Entertainment Area with Corn Hole, Pool Table, Arcade Games and Giant Chess Set
- Free Ample Parking in Adjacent Six Story Garage
- 5 On-site Dining Options, Boutique and Beach Shops*

**seasonal hours may apply*



21st Street & Boardwalk
2100 Baltimore Ave. | Ocean City, MD 21842
800-447-6779 • 410-289-6191
sales@sghoc.com

Everything in one place.

Razertip®

LEAVE YOUR MARK™



SK



SS-D10



P80



Expansion modules available



P88

Razaire™ MINI

Smoke Extractor Model X60

Enjoy a pyrography workspace that is fresh and clear of smoke with the Razaire™ MINI Smoke Extractor.

REPLACEABLE FILTERS

MULTI-STAGE CARBON FILTRATION

CAN BE USED VERTICALLY OR HORIZONTALLY



NEW

Razertip Industries Inc.

PO Box 910, 301- 9th Street North

Martensville, SK Canada S0K 2T0

Phone 306-931-0889

Toll-free (Canada/U.S.A.) 1-877-729-3787

info@razertip.com | razertip.com

Follow us



Eskimo Curlew
by Cam Merkle
Oil on Tupelo and Brass

