

THE WARD FOUNDATION, INC. PRESENTS

WARD WORLD CHAMPIONSHIP

WILDFOWL CARVING COMPETITION & ART FESTIVAL

2025

COMPETITION
GUIDE

WORLD CLASS ART

LIVING LEGEND
REUNION DINNER

VENDORS

CLASSES, LECTURES,
& MORE



WORLD SINGLE GUNNER,
BEST IN WORLD RINGNECK
BY MALI VUJANIC

PHOTO BY ALAN WYCHECK

150
Years of Smiles
Ocean City - MD

Guyette & Deeter, Inc.

The Leading and Most Trusted Decoy Auction Firm in the World
Guaranteed Condition Reports

Conveniently located in St. Michaels, Maryland.

The only auction house prepared to handle the delicate masterpieces from the Ward World Championship's best artists.

Contact Jon Deeter, 440-610-1768 or Zac Cote, 207-321-8091 to discuss.

Recent sales of decoratives in Guyette & Deeter auctions.



Gary Eigenberger | \$8,400



Larry Barth | \$14,520

Pat Godin | \$19,360



410-745-0485

guyetteanddeeter.com
1210 S. Talbot St, Unit A
St. Michaels, MD 21663





MESSAGE FROM THE WARD FOUNDATION

Wildfowl enthusiasts, artists, and good-time seekers, April 25-27 is the time to join us at the 2025 Ward World Championship Wildfowl Carving Competition and Art Festival! Hosted by The Ward Foundation and set against the stunning backdrop of Ocean City, Maryland, and its 150th Anniversary, this year's festival is shaping up to be extraordinary—and we couldn't be more excited to have you join us!

Get ready to immerse yourself in a jaw-dropping display of wildfowl carvings, where every intricate detail and burst of creativity comes to life in AB Hall at the Roland E. Powell Convention Center. It's a visual feast, with each piece showcasing the passion and artistry that make this event truly special. But the fun doesn't stop at the competition! We've got plenty of exciting happenings, including the delightful Champagne Fish and the Feather & Frond Divisions are back by popular demand, so prepare for some wild and wonderful creations!

As we celebrate the 54th year of this incredible journey, we'll also honor the trailblazers of our craft at the Living Legend Reunion Dinner at the Grand Hotel. This special evening brings together the icons of wildfowl carving—past and present—for a night of celebration, memories, and gratitude.

So, grab your gear, bring your best work, and let's make the 2025 Ward World Championship one for the history books. Here's to the art, the artists, and the lasting magic of wildfowl carving. Cheers to another year of creativity, camaraderie, and community!



ACCOMMODATING FRIENDS

PLEASE SUPPORT THE HOTELS AND MOTELS THAT SUPPORT US!

IDENTIFY YOURSELF AS AN ATTENDEE OF THE 2025 WARD WILDFOWL CARVING COMPETITION TO ENSURE ANY SPECIAL RATES THAT MAY BE AVAILABLE. EARLY RESERVATIONS ARE SUGGESTED. ALL RATES ARE BASED ON AVAILABILITY AND MAY NOT INCLUDE APPLICABLE TAXES. **ADDITIONAL VISITOR INFORMATION IS AVAILABLE FROM THE OCEAN CITY CONVENTION & VISITORS BUREAU UNDER THE TOWN OF OCEAN CITY DEPT. OF TOURISM: 1-800-OC-OCEAN, WWW.OCOCEAN.COM.**

Please call one of the following hotels and motels for rates

Aloft Ocean City
4501 Coastal Highway
Ocean City, MD 21842
443-373-0800

Coastal Palms Beach Hotel
120th St. Ocean Block
Ocean City, MD 21842
410-289-6846
800-552-7263

Hilton Suites
3200 N. Baltimore Avenue
Ocean City, MD 21842
410-289-6444
866-729-3200

Quality Inn Oceanfront
54th St. & the Ocean
Ocean City, MD 21842
410-524-7200
800-837-3586

Barefoot Mailman Motel
#16 35th St. Oceanside
Ocean City, MD 21842
410-289-5343
800-395-3668

Comfort Inn Gold Coast
112th St. & Coastal Highway
Ocean City, MD 21842
410-524-3000
800-228-5150

Holiday Inn Oceanfront
67th St. & the Ocean
Ocean City, MD 21842
410-524-1600
800-638-2106

Residence Inn by Marriott
Ocean City
61st St & Bay
Ocean City, MD 21842
410-732-2222 ext. 5009

Best Western Ocean City
Hotel & Suites
5501 Coastal Highway
Ocean City, MD 21842
443-664-4001
866-664-4004

Country Inn & Suites by
Radisson
12303 Coastal Highway
Ocean City, MD 21842
410-250-1900
800-552-7263

La Quinta Inn & Suites
106 32nd St
Ocean City, MD 21842
410-289-5762

Sea Bay Hotel
6007 Coastal Highway
Ocean City, MD 21842
410-524-6100
800-888-2229

Best Western Plus Ocean City
6007 Coastal Highway
Ocean City, MD 21843
410-524-6100
800-780-7234

Days Inn Oceanfront
23rd St. & Boardwalk
Ocean City, MD 21842
410-289-9103
800-926-1122

Paradise Plaza Inn
3 9th St. 9th St. & Boardwalk
Ocean City, MD 21842
410-289-6381
888-678-4111

Surf Inn Suites
7100 Coastal Highway
Ocean City, MD 21842
Use Promo Code Ward
410-524-7100

Burgundy Inn Hotel
1210 Philadelphia Ave
Ocean City, MD 21842
800-428-1108

Dunes Suites
2800 Baltimore Avenue
Ocean City, MD 21842
410-289-1100
800-523-2888

Park Place Hotel
207 N Atlantic Ave
Ocean City, MD 21842
410-289-6440
888-212-7275

Talbot Inn
311 Talbot St
Ocean City, MD 21842
410-289-9125
800-659-7703

Cambria Hotel Ocean City -
Bayfront
13 St Louis Ave
Ocean City, MD 21842
410-289-1645

Fairfield Inn & Suites Ocean City
2501 Philadelphia Ave.
Ocean City, MD 21842
410-289-5000
800-228-2800

Princess Bayside Beach Hotel
48th St. & Coastal Highway
Ocean City, MD 21842
410-723-2900
800-854-9785

Tidelands Caribbean
Hotel & Suites
409 Atlantic Ave
Ocean City, MD 21842
410-289-9455

Castle in the Sand Hotel
3701 Atlantic Avenue
Ocean City, MD 21842
410-289-6846
800-552-7263

Princess Royale Resort
and Conference Center
9100 Coastal Hwy
Ocean City, MD 21842
410-524-7777
800-4-ROYALE

OFFICIAL

Grand Hotel & Spa
2100 Baltimore Avenue
Ocean City, MD 21842
410-289-6191
800-447-6779

Living Legend Dinner
is held here.



INFO & TABLE OF CONTENTS



SHOW HOURS

| | |
|---------------------------|--------------------|
| Friday, April 25 | 10 a.m. - 5 p.m. |
| Living Legends | |
| Reunion Dinner | 5:30 p.m. - 8 p.m. |
| Saturday, April 26 | 9 a.m. - 5 p.m. |
| Sunday, April 27 | 10 a.m. - 3 p.m. |
| Award Ceremony | Noon |

ADMISSION

| | |
|--------------------------------|-----------------------|
| Multi-Day Pass | \$10 |
| Seniors & Students | \$8 |
| Children 12 & Under | Free With an adult |



ENTRY FEES

All NON-MEMBERS will be charged a \$10 admin fee at registration

| | |
|---------------------------------------|------------------------------------|
| World Class | \$150 each Division |
| Masters Class | \$100 first entry, \$50 each add'l |
| Advanced | \$60 first entry, \$35 each add'l |
| Intermediate | \$35 first entry, \$15 each add'l |
| Novice | \$20 first entry, \$10 each add'l |
| Youth | Paid for by Gary & Pam Stenger |
| Sculpture | \$75 first entry, \$35 each add'l |
| Lem & Steve Ward Divisions | \$35 first entry, \$15 each add'l |
| Champagne | \$35 first entry, \$15 each add'l |
| Feathers & Fonds | \$50 first entry, \$35 each add'l |



| | |
|---|----|
| Accommodating Friends | 3 |
| 2025 Ward Foundation Living Legend Dinner | 6 |
| Ward World Championship Rules | 7 |
| Registration | 10 |
| World Divison | 12 |
| Leveled Competition | 14 |
| A. Danner Frazer Youth Competition | 20 |
| Lem & Steve Ward Competition | 22 |

| | |
|--|----|
| Official Species Designations | 28 |
| Ward Worlds Wildfowl Competition Diagram | 18 |
| Happenings | 5 |

COMPETITION COMMITTEE

Kristie Clattenburg (Chair),
J Arthur Leonard (Board Liaison), Pam Morris,
Bennett Scott, Rich Smoker, Chris Pusey,
Peter Palumbo

Funded in part by



Limited Time Offer!

**SAVE
29%**

Save 29% Off *Wildfowl Carving Magazine*



- Four collectible issues per year with the latest bird carving updates, articles, and ideas.
- Step-by-step carving demonstrations, so you can see clearly how to transform a block of wood into a lifelike bird.
- Patterns to bring to your workbench
- Painting tutorials and color guides to help you bring your carving to life.
- Expert tips, tricks, and techniques for beginner and experienced carvers alike.
- Projects for both decoratives and decoys
- Habitat inspiration, carver profiles, and reference articles
- Inspiration for loons, owls, ducks, raptors, songbirds, and many more birds!
- And much more!

Subscribe today and SAVE 29% off your one-year introductory subscription!



(877) 762-8034 (U.S.)
(866) 375-7257 (Canada)



Give the operator
promo code: **WARD25**



www.wildfowl-carving.com/WARD25

HAPPENINGS



Classes, Workshops, Lectures, & Panels

Watch our website store, wardfdn.org, for upcoming classes, lectures, and panels!

Some of our instructors and speakers:

Dan Burgette, Tom Christie, Pat Godin, Josh Guge, Rich Smoker, Ross Smoker, Dick Snyder, Tommy Stewart, and so many more!

VISIT OUR WEBSITE TO SIGN UP FOR CLASSES. SIGN UP AT THE SHOW FOR SEMINARS, WORKSHOPS, & PANELS



Sponsors

Jeff Bounds
Marg Bounds
Lynn Branson
Jett Brunet
Tom Christie
Capt. Tommy Cornicelli
Jack Cox
Anthony Donato
Tom Flemming
Pat & Jessica Godin
Josh & Laura Guge
Del Herbert
Dr. Kent Kimmel
Jeff & Marna Krete
Robert Kroese
Kathy Marchut
Tom Matus
Eugene Merritt
Michael Petrie
Paul Rhymer
Rich Smoker
Ross Smoker
Richard & Kathy Snyder
Gary & Pam Stenger
Tommy Stewart
C. John Sullivan
Karl & Deb Yankey
And more!

Corporate Sponsors & Grants

City of Ocean City, Benelli USA, Chincoteague Decoy Covers & Artist Association,, Delmarva Decoy Collectors Association, Guyette & Deeter, Habbart Dean Memorial Fund, Louisiana Wildfowl Carvers & Collectors Guild, Maryland Folklife, Maryland Heritage Area Authority, Maryland State Arts Council, MDI Wood Carvers Supply, Minuteman Press, National Endowment for the Arts, Ocean City Accommodations, Heritage Award Fund, Sharp Gas & Energy, TidalHealth, The Paper People, VanNuys Foundation, Worcester County Arts Council, G&E Hardware, Indian River Construction Classes, and many more.

2025 LIVING LEGENDS REUNION DINNER

Friday, April 25, 2025

Reception begins at 5:30 PM



This award recognizes individuals who:

- **Have been long-time advocates for wildfowl art and the Ward Foundation.**
- **Are generous in spirit and commitment to teaching others and passing on their knowledge, skills, and talents.**
- **Have created an impact on the field of wildfowl art and the Ward World Championship Wildfowl Carving Competition.**

Join us for a memorable evening celebrating Ocean City's 150th anniversary by honoring past recipients of the prestigious Living Legend Award at the iconic Grand Hotel & Spa, right on the beautiful Ocean City boardwalk. This special event highlights the incredible contributions of past awardees and brings together the vibrant wildfowl art community.

Tickets are just \$75 for Ward Foundation members and \$85 for non-members, but seats are limited – so be sure to reserve yours early! Secure your tickets and sponsorship on the Ward Foundation website at www.wardfdn.org.

The Grand Hotel is offering exclusive rates for carvers, competitors, and guests, so don't miss out! Call 800-447-6779 for special early bird pricing.

Consider enhancing your experience by becoming a sponsor. The Living Legend Dinner is made possible through the generous support of the wildfowl art community. Sponsors contributing \$150 or more will be recognized, while those giving \$250 or more will enjoy Signature Sponsor benefits, including two tickets to the dinner and prominent recognition.

Celebrate the past, honor tradition, and be part of Ocean City's legacy!



Group photo of Living Legends who were at the 2024 Living Legend Dinner

Photos: Alan Wycheck

WORLD COMPETITION RULES

THE COMPETITION IS OPEN TO WOOD SCULPTORS OF ANY LEVEL OF ARTISTIC SKILL. IN ADDITION TO WORLD AND MASTERS, THERE ARE THREE GENERAL LEVELS OF COMPETITION: ADVANCED, INTERMEDIATE AND NOVICE.

Competition Levels

Carvings are grouped together by levels indicated by colored banners hanging over the display areas.

• **World (white banners):** In the six World Divisions, entrants compete for the title of World Champion, championship ring and cash award.

• **Masters (turquoise banners):** Only carvers who have previously won two Best of Show awards in Advanced, or placed 1st, 2nd or 3rd in World in any division other than SR Shootin' Rig are eligible to enter in Masters and are no longer eligible to enter Advanced. They are eligible to enter any of the four divisions of the Masters Class competition and/ or they may elect to compete for a World title. This applies to either an individual carver or a carver in partnership with another artist. If it is discovered that a carver has entered Masters without meeting the eligibility requirement, the entry will be immediately removed from the Masters area. If judging has already occurred, any awards will be rescinded.

• **Advanced (blue banners):** This level represents advanced amateur and professional carvers, including those who have obtained top rankings in competitions. Entrants compete for cash awards, ribbons, and rosettes. Advanced is not open to MASTER carvers. Any carver who is not eligible for Masters but has entered at the World Level must enter Advanced.

• **Intermediate (yellow banners):** This level includes carvers who have refined their sculpture and painting skills beyond the novice level. Intermediate carvers compete for ribbons, rosettes, and Best in Show cash awards. Carvers who have won one Best in Show or two Best in Division (excluding Bench) awards at this level in the World Competition must move to the Advanced level. Carvers who have been consistent blue ribbon winners at this level are encouraged to move up to Advanced.

• **Novice (red banners):** This level is reserved for entry-level carvers. Novice carvers compete for ribbons, rosettes and Best in Show cash awards. Carvers who have won one Best in Show or two Best in Division (excluding Bench) awards at this level in the World Competition must move to the Intermediate level. Carvers who have been consistent blue ribbon winners at this level are encouraged to move up to Intermediate.



Judging Criteria

The following definitions of judging criteria have been adopted by the Ward Foundation. Each criteria is given equal weight in the judging process. The higher the level the more critically assessed. These criteria will be used for all of the following levels of competition—World, Masters, Advanced, Intermediate, and Novice—in all divisions except Interpretive:

• **Technique/Craftsmanship** refers to the technical skills involved in bird carving: sculpting, painting and finishing techniques and their execution. It covers the bird or birds, any habitat or accessories that may be involved and the base itself if there is one. Craftsmanship should be consistent throughout the entire piece. Good craftsmanship is basic to bird carving. Without it, a piece will go no further.

• **Accuracy** involves the correctness of a piece from a scientific perspective. Is the bird the right size? Are the feathers the right shape? Is the coloration and pattern correct? Are the eyes properly placed? Do the toes have the right number of joints and are they in the right places? All these are questions of accuracy. Anything accompanying the bird must be given the same scrutiny. Accuracy involves the natural history of the whole piece, all of its components and the appropriateness of these components together.

• **Essence of the Species** involves taking accuracy one step further. It involves a thorough knowledge of one's subject and the ability to capture an attitude in wood. You see a bird on your lawn at dusk. You can't see any details in the failing light, just a silhouette, and yet the hop and cock of the head immediately identify it as a robin. The essence of the bird is there without a feather count, a measurement of length or a check on color. You may have flawlessly crafted your bird with faultless accuracy, but unless you have captured the essence of your subject and given it the spark that brings it alive, your bird will not achieve its fullest potential.

• **Artistry** of a piece involves its design and composition. This is where presentation, innovation and creativity all come into play. There should be a beauty in the concept apart from the beauty of the bird itself. Line, form, content, color, mass and movement should all be working together to create an integrated whole. Of all the concerns in carving, artistry is the most elusive, the most difficult to explain, to teach, to analyze in the work of others, and to instill in one's own work. But the difficulty is an indication of the importance.

WORLD COMPETITION RULES

THE COMPETITION IS OPEN TO WOOD SCULPTORS OF ANY LEVEL OF ARTISTIC SKILL. IN ADDITION TO WORLD AND MASTERS, THERE ARE THREE GENERAL LEVELS OF COMPETITION: ADVANCED, INTERMEDIATE AND NOVICE.

Judging Criteria

- Overall Presentation. What is rare is often what is valuable. Bird carving requires a multitude of technical skills brought together in the overall presentation. Additionally, it requires a thorough knowledge and understanding of birds scientifically as well as emotionally. But most importantly, it involves the ability to bring all these elements together artistically. If bird carving is to move beyond craft to art, our goals and expectations must do the same. No artificial lighting will be used during judging, artificial lights (handheld or tabletop) are not permitted and will not be on the display.
- All criteria are important. They all overlap and build on each other. In order for a piece to reach its fullest potential it must succeed in all five areas simultaneously. For the sake of clarity we have dealt with them individually, but in reality the distinctions are not so clear cut.

As the competitor moves through the different levels of competition and eventually to the Masters and Advanced levels, technique/craftsmanship and accuracy as criteria are taken almost for granted, as these are the tools expected to have been mastered, allowing the artist to concentrate on the essence of the species and artistry of the competition piece entered. Please refrain from posting images of your work in progress to finished carving of your entry pieces on social media.

Some rules are open to individual interpretation, giving an artist as much artistic license as possible; some are very specific. It is up to the judges to interpret the rules with guidance from the Ward Foundation. The judges' decisions are final.

DECORATIVE MINIATURE MEASURING CRITERIA
Entries must be one half lifesize or less. The Ward Foundation reserves the right to move entries deemed too large for miniature to the bench class.

WATERFOWL PAIR
Unless otherwise stated, a waterfowl pair is a drake and a hen of the same species.



Judging Criteria

RULES FOR BEST IN CATEGORY AND DIVISION AWARDS

- First, Second and Third in Category winners (Division E, CD, GP, SW and YG) will be determined with First in Category being selected from the First in Species winners. Second in Category will be chosen from the remaining First in Species winners along with the Second in Species of the previously selected species. Third in Category will be chosen from the remaining First in Species winners plus the next runner-up at the species level in the species previously selected for First and Second in Category. In other words, it is possible to select First, Second, and Third in Category from the same species.
- Best in Division (All Divisions except World's, MH & H) will be selected from the winner of each of the Categories. Second in Division will be selected from the remaining First in Category winners plus the Second in Category winner from the previously chosen Category. Third in Division will be chosen from the remaining First in category winner(s) and the next runner-up at the Category level in the category(ies) previously selected for First and Second Division. In other words, it is possible for judges to select First, Second, and Third in Division from one species.
- Division MH & H will be judged for Best in Division with second and third awarded as well.

Competitors must submit documented reference materials at the time of registration for those birds not listed in the National Audubon Society's The Sibley Guide to Birds. These reference materials are necessary for the accurate judging of your bird. The Ward Foundation is not responsible for lost reference materials.



WARD WORLD CHAMPIONSHIP

Please note this guide can and will be updated as needed. Watch for update notes on our website.
www.wardfdn.org



Support the Ward World Championship

Proudly support the Ward World Championship and the Ward Foundation. By championing this prestigious event and the noble mission of the Ward Foundation, you can contribute to the preservation of wildlife art, the celebration of artistic excellence, and the cultivation of a community passionate about nature and creativity. Together, we honor the legacy of Lem and Steve Ward while inspiring future generations to embrace their artistic talents and respect our natural world.

Membership has its benefits! Whether you are an avid outdoorsman, an artist, or someone who just appreciates art, you will see significant value in a membership at the Ward Foundation. With your membership, you receive many benefits including helping support a traditional art culture. Now you can renew your membership or join by choosing a membership level on our website, wardfdn.org.

You can choose the level of membership which is best suited for you. Individual membership is \$30 per year, a Pair membership is \$60, and the Ward Goose Membership is \$150. Sponsorships for our legacy events are also available.

Every dollar of support helps advance our mission and expand the impact of this organization and membership is tax-deductible as a donation to a 501(c)3 nonprofit organization. Keep in mind, that membership provides the Foundation with a steady and reliable source of income.

2025 Annapolis Decoy Show

Sponsored by the Potomac Decoy Collectors Association



Sunday, June 1, 2025

9:00 a.m. – 3:00 p.m.

Annapolis Elks Lodge
2 Pythian Drive
Edgewater, Maryland 21037

Antique Duck Decoys, Contemporary Carvings, Hunting & Fishing Items, Sporting Art, Oyster Cans, Books, Special Exhibits, Buy, Sell, Trade

Free Admission ♦ Free Parking ♦ Free Identification & Appraisals

For map and directions, visit: elks622.com

For more details: chad.tragakis@gmail.com or call (703) 593-3024



REGISTRATION INFO

Registration

Thursday, April 24, from 11 a.m.-8 p.m. and Friday, April 25, from 7-9 a.m.
LOCATION: Roland E. Powell Convention Center, 40th and Coastal Highway, Ocean City, Maryland.

- All entries must be hand-delivered either by the carver or a designated second party, except for mail-ins.
- Mail-in entries will be accepted for Lem & Steve and Youth. See page XX for instructions.
- Entry fees are paid at registration. Registration forms will be completed on-site.
- The Ward Foundation will assign a registration number when your entries are processed.
- The name of the competitor should not be visible on entries; covering with masking tape is adequate. The name of the species should be on the bottom of the base.
- Competitors will receive a competitor badge and can purchase guest badges at registration, \$5 members and \$10 non-members.
- Competitors will be allowed early admittance to the show at 8 a.m. Sunday. Official competitor name badges must be visibly worn to gain entry during these pre-show hours. Competitor's guests, with guest badges, may accompany the competitor.
- We do not allow the removal of entries before 3 p.m. Sunday. All persons removing carvings must be carrying the registration receipt for those carvings.
- Competitors are asked to submit documented reference materials at the time of registration for those birds not listed in the National Audubon Society's The Sibley Guide to Birds. These reference materials are for the accurate judging of your bird.
- Provide documentation at registration about the construction of your entry that would help the judging process, i.e. structural strengthening techniques used in SR. These notations will be given to the judges for their attention during their initial evaluation.
- Any artist with an entry not suitable for tabletop display is required to notify the Ward Foundation by April 2. Under no circumstances should an artist drill (or attach in any way) an entry or base onto a table in the convention center.
- Artists are encouraged to place their business cards beside their work after judging is completed.

Registration

- Names of carvers of the Champagne Waterfowl Division entries will be identified by the Ward Foundation after judging if time allows.
- Youth carvers are welcome to enter "adult" levels of competition but once a carving is entered outside of the youth competition, it is no longer eligible to be judged in the youth competition.
- Please note that once an entry is placed in the competition hall, competitors will not be allowed to move their entry for any reason without prior permission of the show director or a floor captain nor enter the center areas of the World and Master divisions.
- Contact the Ward Foundation by email kclattenburg@wardfdn.org with any questions. Visit us on the web at wardfdn.org.
- The ultimate responsibility of accurately registering an entry rests with the carver. The Competition Committee reserves the right to move a carving prior to judging if it is discovered that it was inappropriately registered or misplaced.
- Sample Registration forms online at wardfdn.org.

Castle IN THE Sand

HOTEL

SUITES • EFFICIENCIES • CONDOS • ROOMS • COTTAGES

- Coconuts Beach Bar & Grill
- Beach House Restaurant
- Take A Dip Ice Cream Shop
- Olympic Pool & Diving Board
- Beach Equipment Rentals
- Free Children's Activities
- Free Wireless Internet
- Wait Service on the Beach
- Live Music on Coconuts Patio
- Meeting Room
- Senior Citizen Rates
- Hot Deals & Discount Rates

Come stay in our Castle by the sea,
where we treat you like Royalty!



Always your best rate when booking
by phone or on our website!



Oceanfront at 37th Street
410/289-6846 • 800/552-SAND
www.castleinthesand.com

MAIL-IN INSTRUCTIONS

For international artists and competitors please check with U.S. Customs before shipping. The Ward Foundation is not responsible for any loss or damage to mail-in entries. Please email kclattenburg@wardfdn.org for UPS or FedEx address.

**MAIL/SHIP TO:
USPS**

**Ward Foundation, Inc, PO Box 2132, Salisbury, MD
21802**

DEADLINE: Must be received by April 15, 2024.

1. Entrants must pre-pay with credit card, check or money order:

a. Shipping, including a pre-paid, return-postage, shipping label with insurance. Record tracking numbers for your own records.

b. \$5 handling fee per box (not per entry). Fee not required for youth entries.

c. Entry fees, including membership or \$10 non-membership fee.

2. Entrants must complete registration form(s).

a. You may download a sample form from www.wardfdn.org.

b. The sample form is not an official registration form. Your entry will be registered by the competition registrar.

c. Complete the sample form ensuring all information, including entry fees, is correct.

d. Enclose payment with the correct totals. Carvings mailed without full payment will not be entered.

e. You must sign the sample form to authorize registration of your entries and compliance with all rules, guidelines and waivers.

f. Make a copy of your filled-out, sample registration form for your own records.

g. In an envelope, enclose the completed registration form(s) as well as your payment and return postage label. Put the envelope in the shipping box with your carving(s).

3. Carvings will be shipped to the owners no later than two weeks after the competition. Arrival times will vary depending on your distance from Salisbury, MD.

4. If you or your agent will be picking up your carving at the show closing (Sunday, 3 p.m.), please provide instructions along with your sample registration form.



5. Packing Recommendations: The following is based on recommendations of USPS, UPS, and FedEx to ensure the utmost safety for your carvings.

a. Use a rigid corrugated box large enough for carving(s) and cushioning materials.

b. Wrap each carving separately using proper cushioning material such as bubble wrap.

c. Each carving should be surrounded by at least two inches of cushioning and be placed at least two inches from inside wall of box. Use peanuts or foam for loose fill to avoid shifting.

d. Enclose envelope with sample form, fee payments, and return postage label.

e. Seal box securely with packing tape.

6. Mail in box.

Please No Stamps for return postage. Postage to ship back can be added on to your check or credit card payment for registration.



2025 WORLD COMPETITION CHAMPION LEVEL

THE SIX WORLD DIVISIONS PROVIDE THE OPPORTUNITY FOR ADVANCED LEVEL CARVERS TO COMPETE FOR THE TITLE OF WORLD CHAMPION. THESE ARE ELITE DIVISIONS FOR THOSE CARVERS WHOSE WORK DEMONSTRATES THE HIGHEST LEVEL OF ARTISTRY AND TECHNIQUE. JUDGING STANDARDS ARE THE MOST DEMANDING WITH THE VERY BEST CARVINGS EARNING THE TITLE "BEST IN WORLD." IF A CARVER ENTERS IN THE WORLD CLASS AND PLACES IN THE FUTURE THEY MUST ENTER MASTERS; IF THEY DO NOT PLACE AND NEVER HAVE PLACED, THEY MUST ENTER ADVANCED.

Any artist with an entry not suitable for tabletop display is required to notify the Ward Foundation by April 2, 2025.

ENTRY FEE

\$150 per entry, each division

Entries are limited to one per division. World division competitors entering additional pieces must enter at the Advanced levels or, if qualified, at the Masters level.

Divisions

A–Decorative Lifesize Wildfowl
B–Decorative Lifesize Waterfowl Pair
C–Decorative Miniature Wildfowl
D–Interpretive Wood Sculpture
SR–Shootin’ Rig
WG–Single Gunner Decoy

1. Entries must never have entered at the Ward World Championship before.
2. Entries must be original in design and concept. If after judging it is determined that this policy has been ignored, the award will be rescinded.
3. Entries are limited to one per Division, per entrant.
4. Species and sex must be designated on the entry.
5. Name of artist should not be visible.

Divisions A and C–Decorative Lifesize Wildfowl and Decorative Miniature Wildfowl

Entries will be judged on Technique/Craftsmanship, Accuracy, Essence of Species, and Artistry and Overall Presentation.

1. The entry will consist of one or more birds of any species with emphasis on creating an innovative and artistic composition.
2. Entries are to be made of wood. Other materials may be used for habitat and structural purposes; however, they are to be hand formed with the exception of eyes.

Division B–Decorative Lifesize Waterfowl Pair

The 2025 species is a Harlequin Duck. Entries will be judged on Technique/Craftsmanship, Accuracy, Essence of the Species, Artistry, Overall Presentation and Proper Floatation.

1. Entries are to be made of wood; glass eyes are permitted and materials other than wood can be used in fragile tails and crests.
2. Entries must float in a natural position but do not have to self-right.
3. Judging for Decorative Lifesize Waterfowl will be limited to the designated waterfowl only.
4. If a base is used, it must be separate from the carving and indicate placement. The base will not be considered part of the carving and will not be displayed during judging.
5. Any deterioration of the paint or structural integrity at the completion of judging will result in the disqualification of the entry.

Division C–Decorative Miniature Wildfowl

1. Entries must be one half lifesize or less. All other criteria are the same as Division A.

Division D–Interpretive Wood Sculpture

Entries will be judged on craftsmanship, artistry, interpretation of the essence of the wildfowl and originality. A carving should emphasize form, content and movement rather than a realistic duplication of the wildfowl. It should be presented in a style that provokes thought and wonder.

1. Subject may be entrant’s choice of any wildfowl.
2. Entry is to be entirely of wood with the exception of the structural elements and eyes. The base may be of other material and will be considered as part of the sculpture.
3. If a supporting pedestal under the base is needed, it must be provided by the artist and it will not be considered as part of the sculpture.
4. Interpretive Wood Sculpture entries have no size restrictions.

World Lifesize Waterfowl Pair Species:

2025 Harlequin Duck
2026 Blue Goose
2027 Mandarin Duck
2028 Scoter (any, worldwide)
2029 Puffin (all and a pair)



2025 WORLD COMPETITION CHAMPION LEVEL

Division SR—Shootin’ Rig

These decoys are rooted in the classic gunning decoys’ function and design. As a World Class division, they are judged on Technique/Craftsmanship, Accuracy, Artistry, Overall Presentation and Proper Floatation. Judging is a two-part process. It begins on the table where they are judged in hand and reviewed for compliance of the rules. Final judging is done while the entries are floating on Assawoman Bay at a minimal distance of 20 feet. Judges remain on the judge’s platform until the judging is completed. Decoys once set remain at anchor for the duration of judging.

1. Any worldwide species of waterfowl, including pelagic and coastal seabirds, may be selected. All seasonal plumages are acceptable.
2. Three birds are required: a drake and hen of the same species with a third bird of choice.
3. Decoys shall be floated as a rig and they must self right. Anchor lines with a maximum length of 6 to 8 feet will be attached to each rig component. Sufficient weights are required.
4. Decoys will be judged under natural weather conditions in Assawoman Bay and demonstrate proper floatation.
5. Decoys shall be constructed of wood or cork; glass eyes are permitted. All vulnerable areas must be durable; materials other than wood can be used in tails and crests. During registration, carvers have the option to submit in writing any structural strengthening techniques used in their rig. This information will be identified by carver’s number and given to the judges during their initial evaluation.
6. No burning or fine stoned texturing is allowed. However, simulated texture using gesso, modeling paste, or texture paint in combination with combing, scratching, or brushing is acceptable. Minimal carving techniques used to simulate feather texture on heads, i.e. merganser heads, are acceptable.
7. Any deterioration of the paint or structural integrity at the completion of judging will result in the disqualification of the entry.

Division WG – Single Gunner Decoy

The 2025 species is a Blue Goose. This division emphasizes simplicity and most resembles the functional tool of the decoy maker. Entries will be reviewed for compliance with rules prior to judging. Decoys will be judged 20 feet from the judges on Assawoman Bay (weather dependent).

1. Carving and painting should be functional enough to be used as tools for hunting. No undercut feathers. Wood, cork and canvas allowed.
2. Decoys will be floated and must self-right from any position, except geese, swan and confidence, which must right only from their side(s). All entries will be judged for stability and proper floatation.
3. Carvings must be a drake of said species. They should be lifesize or oversized with no preference shown by judges.
4. No burning or fine-stoned texturing is allowed. However, simulated texture using gesso, modeling paste or texture paint in combination with combing, scratching or brushing is acceptable. Minimal carving techniques used to simulate feather texture on heads, i.e. merganser heads, are acceptable.
5. Painting: Can be simple in style, or in the style of a contemporary antique with no preference shown by judges.
6. Any deterioration of paint or structural integrity at the completion of judging will result in the disqualification of the entry.

World Single Gunner Species:

2025 Blue Goose

2026 Black Duck (Drake)

2027 Goldeneye (Drake)

2028 White-fronted Goose



AWARDS

A-Decorative Lifesize Wildfowl

BEST IN WORLD John Scheeler Memorial Award
\$3,000, trophy, Champion ring,
and rosette

SECOND IN WORLD \$1,500 and rosette

THIRD IN WORLD \$750 and rosette

C-Decorative Miniature Wildfowl

BEST IN WORLD
\$3,000, trophy, Champion ring,
and rosette

SECOND IN WORLD \$1,500 and rosette

THIRD IN WORLD \$750 and rosette

SR- Shootin’ Rig

BEST IN WORLD Jimmy Vizier Memorial Award
\$3,000, trophy, Champion ring,
and rosette

SECOND IN WORLD \$1,500 and rosette

THIRD IN WORLD \$750 and rosette

B- Decorative Lifesize Waterfowl Pair

BEST IN WORLD Tan Brunet Memorial Award
\$3,000, trophy, Champion ring,
and rosette

SECOND IN WORLD \$1,500 and rosette

THIRD IN WORLD \$750 and rosette

D- Interpretive Wood Sculpture

BEST IN WORLD
\$3,000, trophy, Champion ring,
and rosette

SECOND IN WORLD \$1,500 and rosette

THIRD IN WORLD \$750 and rosette

WG- Single Gunner Decoy

BEST IN WORLD Rich Smoker Heritage Award
\$3,000, trophy, Champion ring,
and rosette

SECOND IN WORLD \$1,500 and rosette

THIRD IN WORLD \$750 and rosette

2025 LEVELED COMPETITION

MASTERS

THE MASTERS CLASS OPENS UP OPPORTUNITIES FOR CHAMPION CARVERS TO ACHIEVE A NEW LEVEL OF EXCELLENCE IN THEIR ART AND TO BE RECOGNIZED AND HONORED WITH AWARDS AT THIS MOST COMPETITIVE LEVEL.

Only carvers who have previously won two Best of Division awards in Advanced, or placed 1st, 2nd or 3rd in World in any division other than SR, Shootin' Rig, are eligible to enter in Masters. They are eligible to enter any of the four divisions of the Masters Class competition and/or they may elect to compete for a World title. This applies to either an individual carver or a carver in partnership with another artist. If it is discovered that a carver has entered Masters without meeting the eligibility requirement, the entry will be immediately removed from the Masters area. If judging has already occurred, any awards will be rescinded.

Any artist with an entry not suitable for tabletop display is required to notify the Ward Foundation by April 2, 2025.

ENTRY FEE

\$100 first entry, \$50 each additional entry

DIVISIONS

ME–Decorative Floating Lifesize Waterfowl

MF–Decorative Lifesize Wildfowl

MG–Decorative Miniature Wildfowl

MH–Interpretive Wood Sculpture

1. Entries must never have entered at the Ward World Championship before.
2. Entries are to be made out of wood. Other materials may be used for habitat and structural purposes; however, they are to be hand-formed with the exception of eyes.
3. Multiple entries in each division are allowed.
4. Sex and species must be designated on the entry.
5. Name of the artist should not be visible.

Special Thanks: Jeff and Marg Bounds wish to recognize the high level of achievement attained by the winners of this prestigious competition by sponsoring the Master Medallions in the memory of their parents, Charles and Eleanor Bounds. Thank you to the Bounds Family.

Division ME– Decorative Lifesize Floating Waterfowl

1. Decorative Lifesize Floating Waterfowl consists of three categories: Marsh Ducks; Diving Ducks; and Geese, Swan and Confidence.
2. If the artist enters more than one carving of the same species, both sexes must be represented.
3. Entries are to be made of wood; glass eyes are permitted and materials other than wood can be used in tails and crests.
4. Entries must float in a natural position but do not have to self-right.
5. Judging will be limited to the waterfowl floating in the tank only.
6. Any deterioration of the paint or structural integrity at the completion of judging will result in the disqualification of the entry.

Division MG–Decorative Miniature Wildfowl

1. Entries must be one half lifesize or less.

Divisions ME, MF and MG

1. Entries will be judged on Technique/Craftsmanship, Accuracy, Essence of Species, and Artistry and Overall Presentation.
2. Divisions MF and MG are divided into the following categories with species in each category judged against one another:
Category 1: Waterfowl, Shorebirds, Wading Birds and Seabirds
Category 2: Upland Game Birds, Birds of Prey
Category 3: NP Land Birds and Songbirds

Division MH–Interpretive Wood Sculpture

Entries will be judged on artistry, interpretation of the essence of the wildfowl and originality. A carving should emphasize form, content and movement rather than a realistic duplication of the wildfowl. It should be presented in a style that provokes thought and wonder.

1. Subject may be the entrant's choice from any wildfowl.
2. Entry is to be entirely of wood with the exception of the base and eyes. The base may be of other material and will be considered as part of the sculpture.
3. If a supporting pedestal under the base is needed, it must be provided by the artist and it will not be considered as part of the sculpture.
4. Interpretive Wood Sculpture entries have no size restrictions.



2025 LEVELED COMPETITION

MASTER AWARDS

ME–Masters Decorative Lifesize Floating Waterfowl

| | FIRST | SECOND | THIRD |
|------------------|---------------------|---------------------|---------------------|
| 3 Categories | ribbon | ribbon | ribbon |
| Best in Masters. | \$1000 | \$500 | \$250 |
| | Rosette & Medallion | Rosette & Medallion | Rosette & Medallion |

MF–Masters Decorative Lifesize Wildfowl

| | FIRST | SECOND | THIRD |
|------------------|---------------------|---------------------|---------------------|
| 3 Categories | ribbon | ribbon | ribbon |
| Best in Masters. | \$1000 | \$500 | \$250 |
| | Rosette & Medallion | Rosette & Medallion | Rosette & Medallion |

MG–Masters Decorative Miniature Wildfowl

| | FIRST | SECOND | THIRD |
|-----------------|---------------------|---------------------|---------------------|
| 3 Categories | ribbon | ribbon | ribbon |
| Best in Masters | \$1000 | \$500 | \$250 |
| | Rosette & Medallion | Rosette & Medallion | Rosette & Medallion |

MH–Interpretive Wood Sculpture

| | FIRST | SECOND | THIRD |
|-----------------|---------------------|---------------------|---------------------|
| Best in Masters | \$1000 | \$500 | \$250 |
| | Rosette & Medallion | Rosette & Medallion | Rosette & Medallion |

Division ME– Decorative Lifesize Floating Waterfowl

1. Decorative Lifesize Floating Waterfowl consists of three categories: Marsh Ducks; Diving Ducks; and Geese, Swan and Confidence.
2. If the artist enters more than one carving of the same species, both sexes must be represented.
3. Entries are to be made of wood; glass eyes are permitted and materials other than wood can be used in tails and crests.
4. Entries must float in a natural position but do not have to self-right.
5. Judging will be limited to the waterfowl floating in the tank only.
6. Any deterioration of the paint or structural integrity at the completion of judging will result in the disqualification of the entry.

Division MG–Decorative Miniature Wildfowl

1. Entries must be one half lifesize or less.

Divisions ME, MF and MG

1. Entries will be judged on Technique/Craftsmanship, Accuracy, Essence of Species, and Artistry and Overall Presentation.
2. Divisions MF and MG are divided into the following categories with species in each category judged against one another:
 Category 1: Waterfowl, Shorebirds, Wading Birds and Seabirds
 Category 2: Upland Game Birds, Birds of Prey
 Category 3: NP Land Birds and Songbirds

Division MH–Interpretive Wood Sculpture

Entries will be judged on artistry, interpretation of the essence of the wildfowl and originality. A carving should emphasize form, content and movement rather than a realistic duplication of the wildfowl. It should be presented in a style that provokes thought and wonder.

1. Subject may be the entrant's choice from any wildfowl.
2. Entry is to be entirely of wood with the exception of the base and eyes. The base may be of other material and will be considered as part of the sculpture.
3. If a supporting pedestal under the base is needed, it must be provided by the artist and it will not be considered as part of the sculpture.
4. Interpretive Wood Sculpture entries have no size restrictions.



MDI Woodcarvers Supply

PO Box 4, Pittsfield, Maine 04967

For Free Printed Catalog Call
800-866-5728

Order online at mdiwoodcarvers.com

*Are you looking for Low Prices with
Fast Service?*

*No Need For Rocket Science
to Figure This One Out.*



2025 LEVELED COMPETITION

ADVANCED, INTERMEDIATE AND NOVICE

CARVERS MAY ENTER AT ONLY ONE LEVEL WITHIN ADVANCED, INTERMEDIATE AND NOVICE. WORLD DIVISION COMPETITORS ENTERING ADDITIONAL PIECES MUST ENTER AT THE ADVANCED LEVEL OR, IF QUALIFIED, AT THE MASTERS LEVEL.

Any artist with an entry not suitable for tabletop display is required to notify the Ward Foundation by April 2, 2025.

ADVANCED CLASS

REPRESENTS ADVANCED AMATEUR AND PROFESSIONAL CARVERS, INCLUDING THOSE WHO HAVE OBTAINED TOP RANKINGS IN COMPETITIONS.

ENTRY FEES

\$60 First entry, \$35 Each additional entry

INTERMEDIATE CLASS

THE INTERMEDIATE CLASS INCLUDES CARVERS WHO HAVE ADVANCED BEYOND THE NOVICE LEVEL.

ENTRY FEES

\$35 First entry, \$15 Each additional entry

NOVICE CLASS

THE NOVICE CLASS IS RESERVED FOR ENTRY-LEVEL CARVERS.
SEE PAGE 21.

ENTRY FEES

\$20 First entry, \$10 Each additional entry

Divisions

E–Decorative Floating Lifesize Waterfowl
F–Decorative Lifesize Wildfowl
G–Decorative Miniature Wildfowl
H–Interpretive Wood Sculpture
J–Bench (Intermediate and Novice)

Entries must never have entered at the Ward World Championship before.



Divisions E, F, and G

Entries will be judged on:

Technique/Craftsmanship, Accuracy, Essence of the Species, Artistry, and Overall Presentation.

1. ADVANCED and INTERMEDIATE entries must be original in design and concept. Work done directly from study birds, published patterns or a classroom project will NOT be considered as original in design and concept. If after judging it is determined that this policy has been ignored, the award will be rescinded. NOVICE carvers will be permitted to enter carvings created from published patterns. Entries created from study birds or classroom projects will not be permitted except in bench. Originality continues to be strongly encouraged.
2. Entries are to be made of wood. Other materials may be used for habitat and structural purposes; however, they are to be hand formed with the exception of eyes.
3. Novice only- Although hand-formed feet and legs are encouraged, novice carvers are permitted to use cast feet and legs.
4. Novice only – Although hand-formed habitat is encouraged, it is not required.
5. Name of the artist should not be visible.

Division E–Decorative Lifesize Floating Waterfowl

1. Entries must be life sized.
2. If the artist enters more than one carving of the same species, both sexes must be represented.
3. Materials other than wood can be used in tails and crests.
4. Entries must float in a natural position but do not have to self-right.
5. Judging will be limited to the waterfowl floating in the tank only.
6. Any deterioration of the paint or structural integrity at the completion of judging will result in the disqualification of the entry.

Division F–Decorative Lifesize Wildfowl

Entries must be life sized.

Division G–Decorative Miniature Wildfowl

Entries must be one half lifesize or less. The Ward Museum reserves the right to move entries deemed too large for miniature to the bench class.



2025 LEVELED COMPETITION

Division H—Interpretive Wood Sculpture

Entries will be judged on craftsmanship, artistry, interpretation of the essence of the wildfowl and originality. A carving should emphasize form, content and movement rather than a realistic duplication of the wildfowl. It should be presented in a style that provokes thought and wonder

1. Subject may be entrant's choice from any wildfowl.
2. Entry is to be entirely of wood with the exception of the base and eyes. The base may be of other material and will be considered as part of the sculpture.
3. If a supporting pedestal under the base is needed, it must be provided by the artist and it will not be considered as part of the sculpture.
4. Interpretive Wood Sculpture entries have no size restrictions.

Division J—Bench (Intermediate and Novice Only)

This division is reserved for the entries that do not meet the rules for any other division. Classroom carvings, group projects with a group leader, and carvings from cast study birds are permitted only in this division and should be identified as such. Entries will be divided into four major categories: waterfowl, shorebirds, songbirds, and all other wildfowl.

1. Entries must be made of wood or cork. Glass eyes are permitted.
2. Waterfowl entries will not be floated during judging



AWARDS/ADVANCED

| E—Decorative Lifesize Floating Waterfowl | | | |
|--|---------|---------|---------|
| | FIRST | SECOND | THIRD |
| 33 Species | ribbon | ribbon | ribbon |
| 3 Categories | \$100 | \$50 | \$25 |
| | rosette | ribbon | ribbon |
| Marsh Ducks, Diving Ducks, Geese & Confidence Decoys | | | |
| | FIRST | SECOND | THIRD |
| Best in Division | \$400 | \$200 | \$100 |
| | rosette | rosette | rosette |

| F—Decorative Lifesize Wildfowl | | | |
|---|---------|---------|---------|
| | FIRST | SECOND | THIRD |
| 8 Categories | \$100 | \$50 | \$25 |
| | rosette | ribbon | ribbon |
| Waterfowl, Shorebirds and Wading Birds, Seabirds, Upland Game Birds, Birds of Prey, NP Land Birds, Songbirds A, Songbirds B | | | |
| Best in Division | \$400 | \$200 | \$100 |
| | rosette | rosette | rosette |

| G—Decorative Miniature Wildfowl | | | |
|---|---------|---------|---------|
| | FIRST | SECOND | THIRD |
| 8 Categories | \$100 | \$50 | \$25 |
| | | | |
| Waterfowl, Shorebirds and Wading Birds, Seabirds, Upland Game Birds, Birds of Prey, NP Land Birds, Songbirds A, Songbirds B | | | |
| Best in Division | \$400 | \$200 | \$100 |
| | rosette | rosette | rosette |

| H—Interpretive Wood Sculpture | | | |
|-------------------------------|---------|---------|---------|
| | FIRST | SECOND | THIRD |
| Best in Division | \$400 | \$200 | \$100 |
| | rosette | rosette | rosette |

AWARDS/INTERMEDIATE AND NOVICE

First, second and third place winners at the species level, Intermediate Division E, will receive ribbons. First, second and third in Category (Division E, F, G and J) will receive rosettes with second and third receiving ribbons. First, second and third in Division (Division E, F, G, H and J) will receive rosettes. Best in Show overall will be selected from the Division Winners.

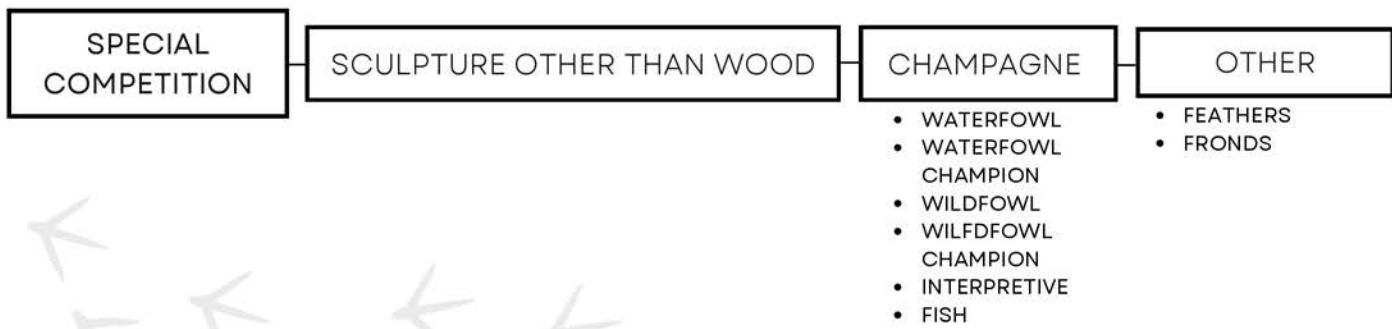
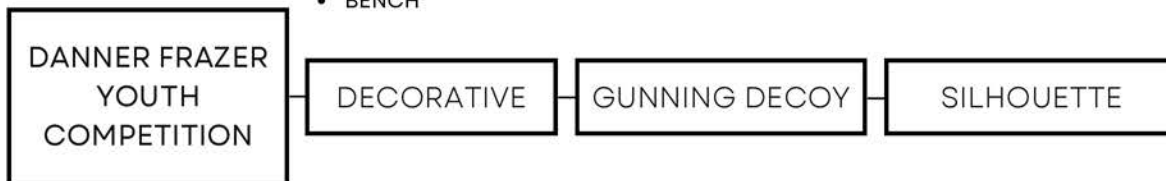
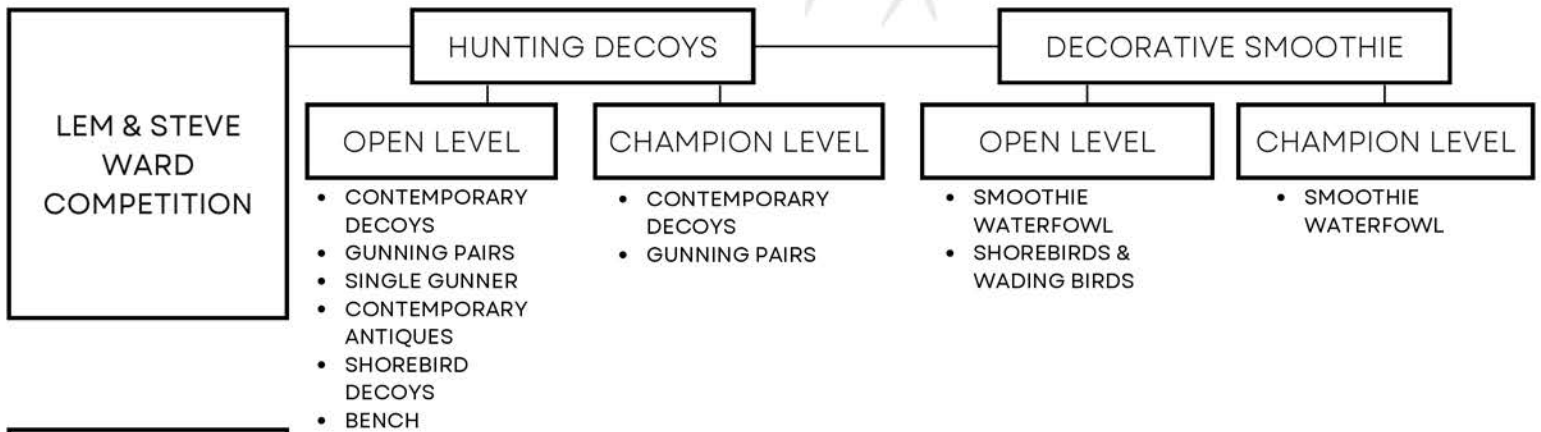
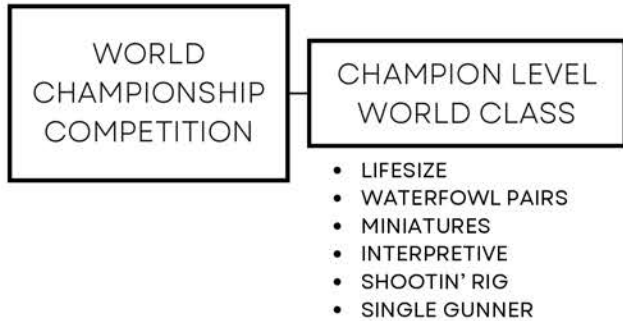
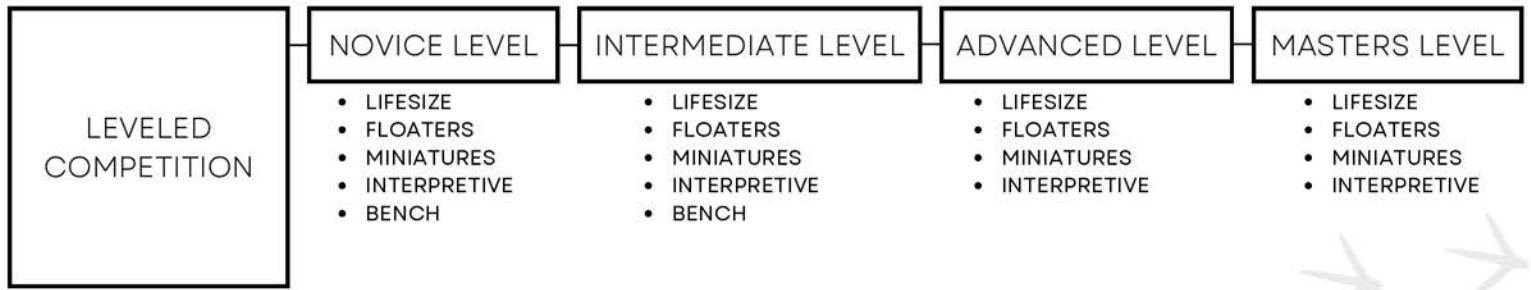
INTERMEDIATE

| | | | |
|--------------|---------|---------|---------|
| Best in Show | FIRST | SECOND | THIRD |
| | \$100 | \$50 | \$25 |
| | rosette | rosette | rosette |

NOVICE

| | | | |
|--------------|---------|---------|---------|
| Best in Show | FIRST | SECOND | THIRD |
| | \$100 | \$50 | \$25 |
| | rosette | rosette | rosette |

2025 COMPETITION LEVELS & DIVISIONS



AMERICAN SPORTING AUCTIONS

Mike Martin

315-576-6058

P.O. Box 15623
Syracuse, NY 13215

AmericanSportingAuctions.com

a decoy and sporting art auction firm selling contemporary decoys and wildlife carvings!



Jim Hazeley



Al Burk



Jim Hazeley

Fair Rates

Detailed Representation

Collection Pick Up Service US & Canada

conveniently located 5 hours from all major north eastern cities!



Keith Mueller



Bill Gibian



Cameron McIntyre



Leo McIntosh



Josh Brewer



The Ward Brothers



Jim Schmiedlin



William J. Koelpin

2025 YOUTH COMPETITION

A. DANNER FRAZER YOUTH COMPETITION

DECORATIVE, GUNNING DECOY, SILHOUETTE

THIS COMPETITION IS TO ENCOURAGE YOUTH TO BECOME ENGAGED IN THE ART FORM OF WILDFOWL CARVING, PROVIDE A VENUE TO PRESENT THEIR CARVINGS TO THE PUBLIC AND GIVE THEM THE COMPETITION EXPERIENCE. ENTRIES MAY BE DONE UNDER THE SUPERVISION OF AN ADULT, BUT THE YOUTH MUST DO THE CARVING AND PAINTING. DIVISIONS WILL BE DIVIDED INTO CATEGORIES AND CATEGORIES INTO SPECIES IF THERE ARE THREE OR MORE NUMBER OF ENTRIES.

ENTRY FEES

\$5 Per entry - Sponsored by Gary and Pam Stenger

Division YD - Decorative Wildfowl

Each age group will be judged 1st, 2nd and 3rd Best in Division.

YD1 - 16-17 years of age at time of registration

YD2 - 12-15 years of age at time of registration

YD3 - 11 and under years of age at time of registration

1. Prior entries into World Youth Competition are not permitted.
2. Entries are to be lifesize or less, realistic or interpretive in nature.
3. Decorative Waterfowl will not be floated.
4. Entries must be made of wood. Glass eyes are permitted. Other materials are permitted for habitat and structural purposes. Hand-formed habitat is encouraged but not required.

Division - YG Gunning Decoy

Entries will be reviewed for compliance prior to floating. The final judging of entries as gunning decoys shall be conducted while entries are floating on the bay at a minimum distance of 20 feet. Once set, decoys shall remain at anchor for the duration of judging. This division will be divided into three categories: Marsh Ducks; Diving Ducks; and Geese, Swan and Confidence.

YG1 - 15-17 years of age at time of registration

YG2 - 14 and under years of age at time of registration

1. Prior entries into competition at the World Championship are not permitted.
2. Carving should be simplistic without fragile areas. No highly defined wings or undercut feathers.



3. Entries must have 6 feet of line and an anchor. Decoys will be floated in the bay under natural conditions.
4. Painting should be simplistic. Combing and scratching are permitted.
5. Decoys must self right from any position except geese and confidence decoys which must right from the side.
6. Entries are to be made of wood, cork or stretched canvas; glass eyes are permitted and materials other than wood can be used in fragile tails and crests.
7. If entry is determined to be inappropriate for Gunning Division, it will be transferred to Decorative Division.



YOUTH AWARDS

YD - Decorative Wildfowl: YD1, YD2, YD3

| FIRST | SECOND | THIRD |
|---------|---------|---------|
| Rosette | Rosette | Rosette |

Division YG - Gunning Decoy: YG1, YG2

| | FIRST | SECOND | THIRD |
|------------------|---------|---------|---------|
| 3 Categories | Rosette | ribbon | ribbon |
| Best in Division | Rosette | Rosette | Rosette |
| | Plaque | | |

Division YS - Silhouette: YS1, YS2, YS3

| | FIRST | SECOND | THIRD |
|------------|---------|---------|---------|
| Silhouette | Rosette | Rosette | Rosette |
| | Plaque | | |

Division YSCA - Silhouette: YSCA1, YSCA2, YSCA3

| | FIRST | SECOND | THIRD |
|------------|---------|---------|---------|
| Silhouette | Rosette | Rosette | Rosette |
| | Plaque | | |

THANK YOU TO OUR SPONSORS!

- Entry fees provided by Gary and Pam Stenger
- Silhouette Division supported by the Habbart Dean Memorial Fund

2025 YOUTH COMPETITION

Division YS - Silhouette: Bufflehead

Entries in this division can be done either as a group project or as an individual. One entry per person. Each age group will be judged 1st, 2nd and 3rd Best in Group.

YS1- 16-17 years of age at time of registration

YS2 - 12-15 years of age at time of registration

YS3 - 11 and under years of age at time of registration

1. Entries are to be made of wood, one inch thick or less and may be lifesize or less in size.
2. Edges may be rounded; wing and bill definition permitted.
3. Glass eyes are permitted.
4. Must be mounted on a simple base with a wood or metal dowel.
5. Entries should be realistically painted.

Division YSCA - Silhouette: Bufflehead

Entries in this division can be done either as a group project or as an individual. One entry per person. Each age group will be judged 1st, 2nd and 3rd Best in Group.

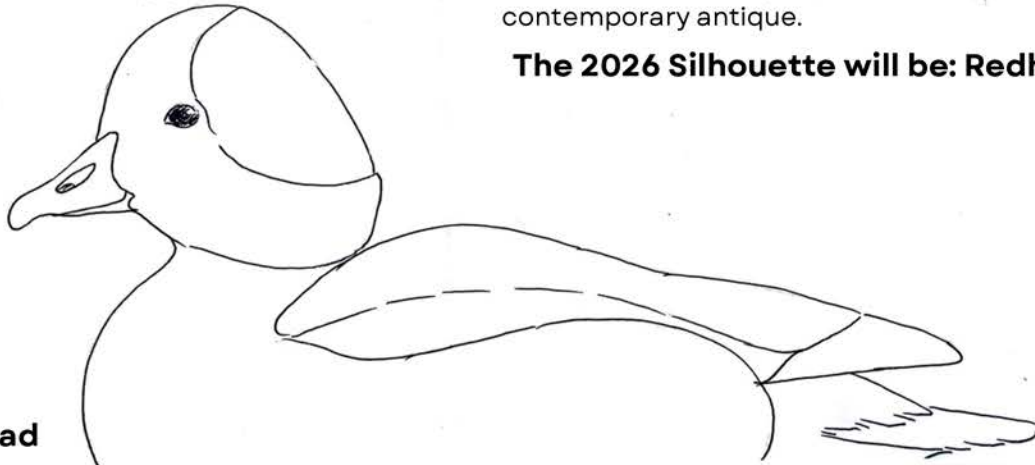
YSCA1- 16-17 years of age at time of registration

YSCA2 - 12-15 years of age at time of registration

YSCA3 - 11 and under years of age at time of registration

1. Entries are to be made of wood, one inch thick or less and may be lifesize or less in size.
2. Edges may be rounded; wing and bill definition permitted.
3. Glass eyes are permitted.
4. Must be mounted on a simple base with a wood or metal dowel.
5. Entries should be painted in the style of a contemporary antique.

The 2026 Silhouette will be: Redhead



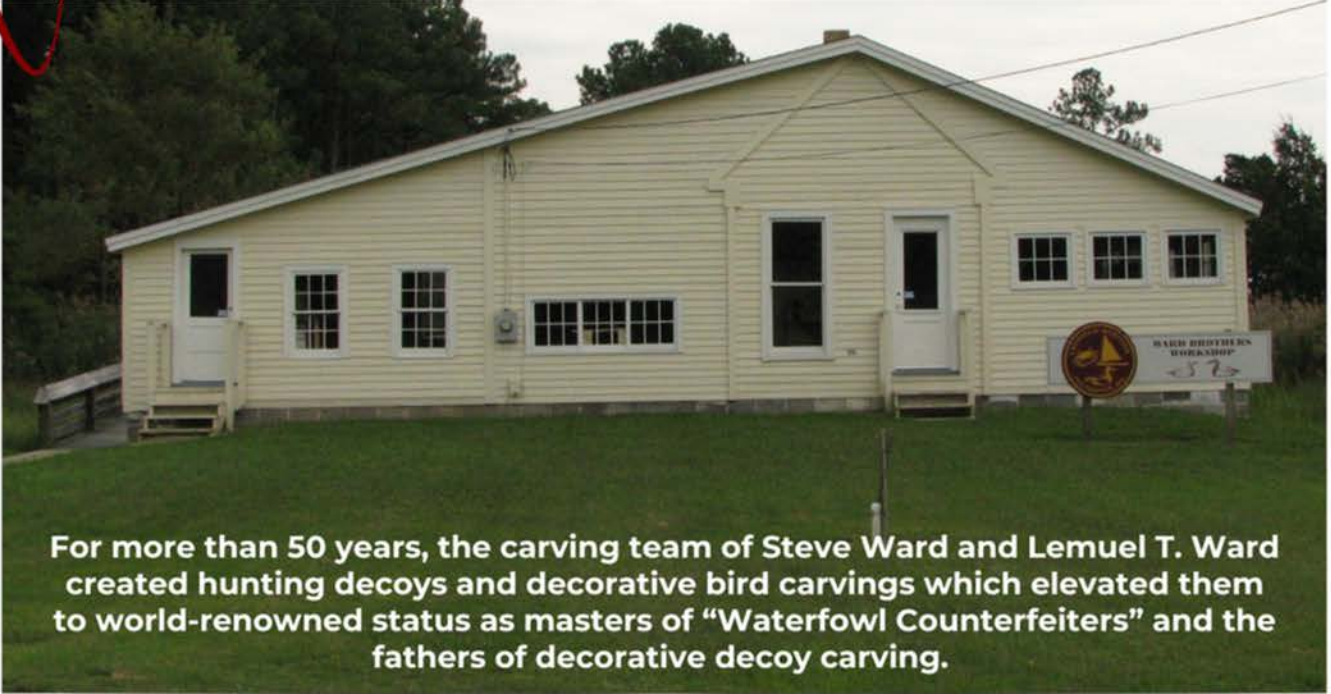
Bufflehead



See where it all started...

Visit

THE ORIGINAL WARD BROTHERS WORKSHOP



For more than 50 years, the carving team of Steve Ward and Lemuel T. Ward created hunting decoys and decorative bird carvings which elevated them to world-renowned status as masters of "Waterfowl Counterfeiters" and the fathers of decorative decoy carving.

April 25-27, 2025

Open for Tours by appointment.

Call 410-968-2501

The Ward Brothers Workshop is

Located at 3195 Sackertown Rd, Crisfield MD

Also, be sure to visit the Tawes Museum to view the film, "Nature's Counterfeiters" and to see many original carvings by the Ward Brothers and other Crisfield carvers. The museum is located at 3 Ninth St., Crisfield, Maryland 21817.

crisfieldheritage.org



2025 LEM & STEVE WARD COMPETITION

HUNTING DECOYS

ENTRY FEES

\$35 First entry; \$15 Each additional entry

VIEW THE EVOLUTION OF DECOY CARVING THROUGH THE DIVISIONS OF THE LEM AND STEVE COMPETITION.

Divisions

CA – Contemporary Antiques

CD, CDC –Contemporary Decoys

GP, GPC–Gunning Pair

SD–Shorebird Decoy

JB–Bench

Prior entries into competition at the World Championship are not permitted.

Divisions CD, CDC, GP, GPC - Waterfowl are to be made of wood, cork or stretched canvas; glass eyes are permitted and materials other than wood can be used in fragile tails and crests.

Division CD & CDC–Contemporary Decoy

Entries are modern contest grade decoys, judged on form and function.

This division is divided into two levels, CD and CD Champion (CDC). The rules for each level are the same. CD is open to all except for those who qualify for the Champion level.

The Champion level will be divided into three categories: Marsh Ducks; Diving Ducks; and Geese, Swan, and Confidence. Anyone who has placed in a World division, competes at the Masters level or has won two best in shows at the World in CD must enter the Champion level. Anyone can choose to enter CDC, but once they have competed at the CDC level they cannot return to the regular CD.

1. Decoys will be floated in the tanks and must self-right from any position, except Geese, Swan and Confidence, which must right only from their side(s). All entries will be judged for stability and proper floatation.
2. Carvings must have sturdy tails and all raised wings must be durable.



3. No burning or fine stoned texturing is allowed. However, simulated texture using gesso, modeling paste, or texture paint in combination with combing, scratching, or brushing is acceptable. Minimal carving techniques used to simulate feather texture on heads, i.e. merganser heads, are acceptable.

4. Painting techniques shall be typical of a modern functional decoy. Entries may include some simple blending of feather edges and internal markings, feather splits, highlighting and hand vermiculation. (Carvings with fully developed decorative painting should be entered into Smoothie Waterfowl.)

5. Any deterioration of the paint or structural integrity at the completion of judging will result in the disqualification of the entry.

Division SG, GP & GPC–Single Gunner and Gunning Pairs

This Division emphasizes simplicity and most resembles the functional tool of the decoy maker. Entries will be reviewed for compliance with rules before floating. Thereafter the judges will remain on the judge's platform until the judging is complete. The final judging of entries as functional decoys shall be conducted while entries are floating on the bay at a minimum distance of 20 feet. Once set, decoys will remain at anchor for the duration of judging. This division will be divided into two levels, GP and GP Champion (GPC). The rules for each level are the same. GP is open to all except for those who qualify for the Champion level.

The Champion level will be divided into three Categories: Marsh Ducks; Diving Ducks; and Geese, Swan, and Confidence. Anyone who has placed in a World division or competes at the Masters level or has won 2 best in shows in CD or GP must enter the Champion level. Anyone can choose to enter GPC, but once they have competed in GPC level they cannot return to the regular GP.

1. Carving and painting should be functional enough to be used as tools for hunting. NO undercut feathers.
2. Decoys will be floated and must self-right from any position, except Geese, Swan and Confidence, which must right only from their side(s). All entries will be judged for stability and proper floatation.
3. Entries must be tandem rigged with 2-3 feet of line between decoys and must have 6 feet of line and a weight. They will be floated in the bay under natural conditions.

2025 LEM & STEVE WARD COMPETITION

4. Carvings must be hen and drake of the same species and should be life size or over sized with no preference shown by judges. *Exception of Single Gunner.
5. No burning or fine stoned texturing is allowed. However, simulated texture using gesso, modeling paste, or texture paint in combination with combing, scratching, or brushing is acceptable. Minimal carving techniques used to simulate feather texture on heads, i.e. merganser heads, are acceptable.
6. Simplicity of painting is required.
7. Any deterioration of the paint or structural integrity at the completion of judging will result in the disqualification of the entry.

Division CA—Contemporary Antique

Decoys will be judged in hand to include all surfaces and attachments. Contemporary Antique will be divided into 10 categories representing Pristine for antique style pieces which have not been subjected to any field use with minimal wear and patina permitted and Worn for pieces which have received heavy field use in which moderate to severe deterioration is apparent. There will be five categories each for Pristine and Worn: Marsh Ducks, Diving Ducks, Geese and Confidence, Shorebirds and All Others.

1. Entries can be inspired by old decoys from geographic areas but must be the carver's original design and interpretation of an 'old' decoy.
2. Entries will be a single decoy. Multiple birds, waterfowling memorabilia, and "copies" are not permitted.

3. All entries must be signed and dated.
4. Decoys should be made to look old by the manner in which they are carved, painted, and finished.
5. Shorebirds and Wading Birds must be mounted on a dowel and have a simple base.

Division SD—Shorebird Decoy

Entries are contemporary shorebird decoys that emphasize the simplicity of line and paint. The division is divided into seven categories.

1. Entries will be a single decoy constructed of either wood or cork with no preference shown by the judges.
2. Separation between wings and tail is permitted providing both are durable.
3. Simplicity of painting is required.
4. Must be mounted on a simple base with a wood or metal dowel. *Exception Single Gunner may be either sex.

Division JB—Bench

This division is reserved for the entries that do not meet the rules for any other division. Classroom carvings, group projects with a group leader and carvings from CAST STUDY BIRDS ARE permitted in this division. Entries will be divided into four categories: waterfowl, shorebirds, songbirds, and all other wildfowl.

1. Entries must be made of wood or cork. Glass eyes are permitted.
2. Waterfowl entries will not be floated during judging.
3. Entries will not be considered as gunning decoys, therefore may be textured.



YOUR SUPPORT MATTERS

www.wardfdn.org



Memberships



Donations



Sponsorships

2025 LEM & STEVE WARD COMPETITION

AWARDS

CD—Contemporary Decoy

| | FIRST | SECOND | THIRD |
|------------------|---------|---------|---------|
| 31 Species | ribbon | ribbon | ribbon |
| 3 Categories | rosette | ribbon | ribbon |
| Best in Division | rosette | rosette | rosette |

CDC—Contemporary Decoy Champion

| | FIRST | SECOND | THIRD |
|------------------|------------------|------------------|------------------|
| 3 Categories | rosette | ribbon | ribbon |
| Best in Division | \$400 rosette | \$200 rosette | \$100 rosette |

SG—Single Gunner

| | FIRST | SECOND | THIRD |
|------------------|------------------|------------------|-----------------|
| 31 Species | ribbon | ribbon | ribbon |
| 3 Categories | rosette | rosette | rosette |
| Best in Division | \$150 rosette | \$100 rosette | \$50 rosette |

GP—Gunning Pairs

| | FIRST | SECOND | THIRD |
|------------------|------------------|------------------|------------------|
| 31 Species | ribbon | ribbon | ribbon |
| 3 Categories | rosette | rosette | rosette |
| Best in Division | \$300 rosette | \$200 rosette | \$100 rosette |

GPC—Gunning Pairs Champion

| | FIRST | SECOND | THIRD |
|------------------|------------------|------------------|------------------|
| 3 Categories | rosette | ribbon | ribbon |
| Best in Division | \$400 rosette | \$200 rosette | \$100 rosette |

CA—Contemporary Antique

| | FIRST | SECOND | THIRD |
|------------------|------------------|------------------|------------------|
| 10 Categories | rosette | ribbon | ribbon |
| Best in Division | \$300 rosette | \$200 rosette | \$100 rosette |

SD—Shorebird Decoy

| | FIRST | SECOND | THIRD |
|------------------|------------------|------------------|------------------|
| 7 Categories | rosette | ribbon | ribbon |
| Best in Division | \$300 rosette | \$200 rosette | \$100 rosette |

JB—Bench

| | FIRST | SECOND | THIRD |
|------------------|---------|---------|---------|
| 4 Categories | rosette | ribbon | ribbon |
| Best in Division | rosette | rosette | rosette |

DECOY MAGAZINE

Celebrating America's finest folk art

The **ONLY** magazine dedicated exclusively to decoy collectors

SUBSCRIBE NOW!

Includes 6 bi-monthly issues plus an annual Year in Review issue

In the U.S.: \$45 year ♦ \$80 for 2 years | In Canada: \$60 year ♦ \$110 for 2 years

Sample Copies: \$12.95 each
includes shipping

Online for over 25 years
Visit us on Facebook!

Gus Wilson
lifted wing preening black duck

P.O. Box 787 ♦ Lewes, DE 19958
(302) 641-9001 ♦ decoymag@aol.com

Visit us on the web at decoymag.com

2025 LEM & STEVE WARD COMPETITION

DECORATIVE SMOOTHIE

This competition challenges the artist to capture the essence of the species via form and paint. Only the bird will be judged, feet and habitat will not be considered. Entries are non-textured carvings done to the artist's highest abilities. The carving will be judged for the likeness and essence of species and artistry. SW and SS are to be lifesize.

Prior entries into competition at the World Championship are not permitted.

Divisions

SW, SWC—Decorative Smoothie Waterfowl

SS—Decorative Smoothie Shorebirds and Wading Birds

Division SW & SWC – Decorative Smoothie Waterfowl

This division will be divided into two levels, SW and SW Champion (SWC). The rules for each are the same. SW is open to all except those who must enter SW Champion.

The Champion level will be divided into three categories: Marsh Ducks; Diving Ducks; and Geese, Swan and Confidence. Anyone may choose to enter the Champion level, but anyone who has placed in a World Division, competes at the Masters or CD Champion level, or has won two best of divisions in Decorative Smoothie Waterfowl must enter the Champion level.

1. Entries will be a single decoy made of wood; glass eyes are permitted and materials other than wood can be used in fragile tails and crests.
2. Entries can either be flat-bottomed or have a keel. Preference will not be given to either by the judges.
3. Sturdy tails are not required. Realism and creative postures are encouraged.
4. Decorative painting to the artist's highest ability, i.e. barbles, translucence and shading are encouraged.
5. No burning, stoning or fine texturing is allowed.
6. Groups of feathers can be defined, i.e. tertials, scapulars, sidepockets, etc.

2.Division SS - Decorative Smoothie Shorebirds and Wading Birds

1. Entries must be made of wood. Glass eyes are permitted.
Realism and creative postures are encouraged.
3. Decorative painting to the artist's highest ability is encouraged.
4. No burning or fine texturing is allowed.
5. The name of the species must be written on the bottom of the base.
6. Groups of feathers can be defined.

AWARDS

SW—Decorative Smoothie Waterfowl

| | FIRST | SECOND | THIRD |
|------------------|---------|---------|---------|
| 31 Species | ribbon | ribbon | ribbon |
| 3 Categories | rosette | rosette | rosette |
| Best in Division | rosette | rosette | rosette |

SWC—Smoothie Waterfowl Champion

| | FIRST | SECOND | THIRD |
|------------------|------------------|------------------|------------------|
| 3 Categories | rosette | ribbon | ribbon |
| Best in Division | \$400 rosette | \$200 rosette | \$100 rosette |

SS—Decorative Smoothie Shorebirds and Wading Birds

| | FIRST | SECOND | THIRD |
|------------------|------------------|------------------|------------------|
| 10 Categories | rosette | ribbon | ribbon |
| Best in Division | \$400 rosette | \$200 rosette | \$100 rosette |

Thank you to our sponsors!

- Sharp Gas and Energy sponsors the Contemporary Antique Division.
- Chincoteague Decoy Carvers & Artists Association sponsors the Gunning Pairs Division.
- Captain Tommy Cornicelli, Tom Christie, Eugene Merritt
- Maryland Folklife Network
- Maryland State Arts Council

2025 OTHER COMPETITIONS

Champagne Division

This competition challenges the artist to capture the essence of the species via form and paint. Entries are non-textured carvings done to the artist's highest abilities. The carving will be judged for the likeness and essence of species and artistry. All carvings must fit within a 3 1/2 inch circle (including bases) and must be no taller than 7 inches. CW and CWC are floated in a small tank. **BEST IN DIVISION FROM EACH WILL BE AUCTIONED, by entering you agree to this.**

Prior entries into competition at the World Championship are not permitted.

Divisions

CW, CWC—Champagne Waterfowl & Champagne Waterfowl Champion

NCW, NCWC—Champagne Wildfowl & Champagne Wildfowl Champion

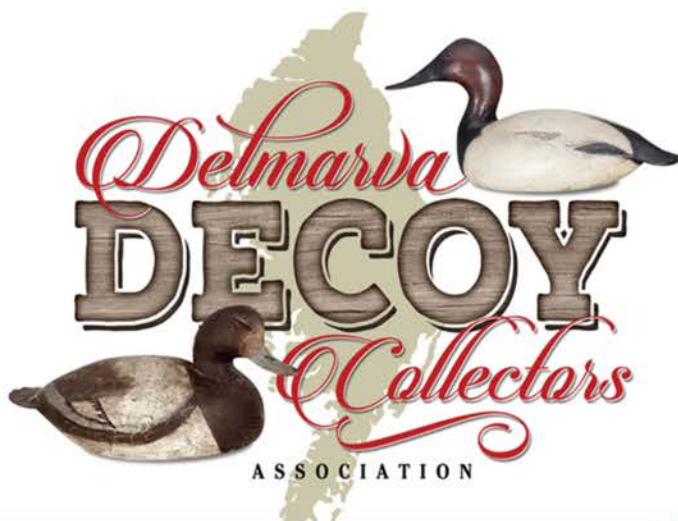
CI—Champagne Interpretive

CF—Champagne Fish

Division CW & CWC - Floating - Champagne Waterfowl Division

Entries will be divided into four categories: Marsh Ducks, Diving Ducks, Geese, Swan and Confidence and Pelagic and Coastal Seabirds. This division will be divided into two levels, CW and CW Champion. The rules for each are the same. CW is open to all except those who must enter CW Champion. Anyone can choose to enter the Champion level, but anyone who has placed in a World Division; competes at the Masters, CD or SW Champion level; or has won two best of divisions in Champagne Waterfowl must enter the Champion level. Once a person has entered CWC, they are not eligible to return to CW.

1. Entries must fit within a 3 1/2 inch circle.
2. Entries must float properly but do not have to self-right.
3. Entries can be either flat bottom or with a keel; the judges will not give preference to either.
4. Entries must be smooth. Groups of feathers can be defined, i.e. tertials, scapulars, side pockets, etc. No texturing is allowed.
5. There are no restrictions on paint.



JOIN OUR CLUB!

The **Delmarva Decoy Collectors Association** is a non-profit organization that promotes the knowledge, appreciation and collecting of vintage decoys and contemporary waterfowl carvings. Although our focus is on decoys made and used on the Delmarva Peninsula, we welcome members from all parts of the country!

What the DDCA offers:

- ❖ Regular Monthly Meetings
- ❖ Special Collecting Events & Presentations
- ❖ Monthly Newsletters
- ❖ Guest Speakers
- ❖ Members-Only Facebook Group
- ❖ **ANNUAL DECOY SHOW**

MEMBERSHIP DUES:

Only \$20 per year or \$50 for 3 years

MEETINGS:

Held at Adam's Taphouse Grille in Fruitland the second Tuesday of each month

For more information, visit our website at
DelmarvaDecoyCollectors.com



Also Like Us on Facebook!
facebook.com/DelmarvaDecoyCollectorsAssociation



Or call Burt Campbell at 302-750-0248

2025 OTHER COMPETITIONS

Division NCW & NCWC - Non-Floating – Champagne Wildfowl Division

Entries will be divided into categories: Songbirds, Raptors, Shorebirds, and Water birds and perching birds excluding ducks and geese. This division will be divided into two levels, NCW and NCW Champion. The rules for each are the same. NCW is open to all except those who must enter NCW Champion. Anyone can choose to enter the Champion level, but anyone who has placed in a World Division; competes at the Masters, CD or SW Champion level; or has won two best of divisions in Champagne Waterfowl must enter the Champion level. Once a person has entered NCWC, they are not eligible to return to NCW.

1. Entries must fit within a 3 1/2 inch circle.
2. Entries should be in realistic positions with feet. May be mounted on bases to enhance sculptural effects; the judges will not give preference to either.
3. Entries must be smooth. Groups of feathers can be defined, i.e. tertials, scapulars, side pockets, etc. No texturing is allowed.
4. There are no restrictions on paint.
5. Entries DO NOT need to float.

DIVISION CI - CHAMPAGNE INTERPRETIVE

Entries will be judged on artistry, interpretation of the essence of the wildfowl, and originality. A carving should emphasize form, content, and movement rather than a realistic duplication of the wildfowl. It should be presented in a style that provokes thought and wonder. Natural finish ONLY.

1. Entries must fit within a 3 1/2-inch circle, this includes the base.
2. Subject may be entrant's choice from any wildfowl.
3. Entry is to be entirely of wood with the exception of the structural elements. The base may be of other materials and will be considered as part of the sculpture.
4. If a supporting pedestal under the base is needed, it must be provided by the artist and it will not be considered part of the sculpture. Must also fit in the 3 1/2 inch circle/cylinder (Height limit of 7 inches tall).



DIVISION CF - CHAMPAGNE FISH

Champagne Fish Division Entries will be divided into categories: Fresh Water and Salt Water. The rules for each are the same. CF is open to all.

1. Entries must fit within a 3 1/2 inch circle.
2. Entries should be in realistic. May be mounted on bases to enhance sculptural effects; the judges will not give preference to either.
3. Anatomical features can be defined. Texturing is encouraged.
4. There are no restrictions on paint.
5. Entries DO NOT need to float.

AWARDS

CWC & NCWC Floating & Non-Floating

| | FIRST | SECOND | THIRD |
|------------------|---------|---------|---------|
| 4 Categories | rosette | ribbon | ribbon |
| Best in Division | \$800* | \$250 | \$100 |
| | rosette | rosette | rosette |

CW & NCW Floating & Non-Floating

| | FIRST | SECOND | THIRD |
|------------------|---------|---------|---------|
| 4 Categories | rosette | ribbon | ribbon |
| Best in Division | \$400* | \$150 | \$75 |
| | rosette | rosette | rosette |

CI - CHAMPAGNE INTERPRETIVE

| | FIRST | SECOND | THIRD |
|------------------|---------|---------|---------|
| Best in Division | \$250* | rosette | rosette |
| | rosette | | |

CF - CHAMPAGNE FISH

| | FIRST | SECOND | THIRD |
|------------------|---------|---------|---------|
| 2Categories | rosette | ribbon | ribbon |
| Best in Division | \$250* | rosette | rosette |
| | rosette | | |

* Purchase Award



2025 OTHER COMPETITIONS

SCULPTURE OTHER THAN WOOD

1. Any sculpture that has not been entered into a prior World Championship may be entered into competition.
2. Wildlife sculptures must be original in design and concept and may either be wildfowl or wildlife in subject matter.
3. Sculpture may be lifesize or miniature, realistic or interpretive in nature.
4. Artists may enter more than one sculpture.
5. Sculptures are to be of materials other than wood.
- A variety of finishing techniques may be utilized.
6. No casting from real wildlife is permitted.

AWARDS

AS - SCULPTURE DIVISION

| | FIRST | SECOND | THIRD |
|------------------|---------|---------|---------|
| Best in Division | \$400 | \$200 | \$100 |
| | rosette | rosette | rosette |

FEATHERS

1. Use means and materials that would provide a lifelike feather, provided that the feather itself is made out of wood.
2. The quill, shaft and down can be painted to emulate the feather you are representing.
3. PLEASE DO NOT BRING YOUR MODEL FEATHER.

AWARDS

FE- FEATHERS

| | FIRST | SECOND | THIRD |
|------------------|---------|--------|--------|
| Best in Division | \$200 | ribbon | ribbon |
| | rosette | | |



Since 1987, producing the finest carving blanks on the market today. Ducks, geese, loons, shorebirds, songbirds, raptors, upland game, wading birds and gannets. We are now offering tupelo in our Premier blanks, along with select shorebirds, upland gamebirds, songbirds and raptors. You'll not find a wider, more diverse, high quality selection of blanks anywhere.



800-553-4725
www.duxdekes.com
1356 North Rd.
Greenwich, New York, 12834

FRONDS

1. Major portion of entry must be made of palm frond.
2. The challenge is to portray the "essence of species" of your subject while retaining as much of the character of the palm frond as possible.
3. Palm fronds will be judged on the table.

AWARDS

FR- FRONDS

| | FIRST | SECOND | THIRD |
|------------------|---------|--------|--------|
| Best in Division | \$200 | ribbon | ribbon |
| | rosette | | |

APRIL 24-27, 2025

Greet the warmer weather with us at Springfest for its 34th year! It's four days full of tasty treats, lively music, and awesome handmade crafts. Join us at the Inlet Lot - right off Ocean City's iconic Boardwalk - for a fun-filled celebration like no other this spring season.

Thurs-Sat: 10am - 8pm
Sun: 10am - 6pm

For more details, visit ococean.com/springfest.



OFFICIAL SPECIES DESIGNATIONS

DIVISIONS CD, SW, AND GP- CONTEMPORARY

DECOY, DECORATIVE SMOOTHIE WATERFOWL, AND GUNNING PAIR, DECORATIVE LIFESIZE FLOATING WATERFOWL

Marsh Ducks

Black Duck
Blue-winged Teal
Cinnamon Teal
Gadwall
Green-winged Teal
Mallard
Northern Pintail
Shoveler
Wigeon
Wood Duck
All Other

Diving Ducks

Bufflehead
Canvasback
Common Merganser
Eiders
Goldeneyes
Hooded Merganser
Long-tailed Duck
Red-breasted Merganser
Redhead
Ring-necked Duck
Ruddy Duck
Scaup
Scoters
All Other

Geese, Swan & Confidence

Brant
Coot
Geese
Grebes
Swan
Confidence and all others

DIVISION SS - SMOOTHIE SHOREBIRD & WADING BIRDS

1. Avocet, Oystercatchers, Stilt
2. Curlew, Whimbrel, Godwits
3. Dowitchers, Knots, Dunlins
4. Phalaropes, Woodcock, Snipe
5. Plovers
6. Yellowlegs, Red and Green Shank,
Solitary Sandpiper
7. Small Sandpipers (under 9")

8. Large Sandpipers, Willets,
Turnstones
9. Egrets, Herons
10. All Other Waders & Shorebirds

DIVISIONS F AND G DECORATIVE LIFESIZE WILDFOWL / DECORATIVE MINIATURE WILDFOWL

Waterfowl

Ducks
Geese
Swans

Shorebirds & Wading Birds

Avocet
Coot
Cranes
Curlew
Egrets
Flamingo
Gallinules
Godwits
Herons
Ibises
Knots
Limpkins
Oystercatchers
Phalaropes
Plovers
Rails
Sandpipers
Snipe
Spoonbill
Stilt
Stork
Turnstones
Whimbrel
Woodcock
Yellowlegs

Upland Game Birds

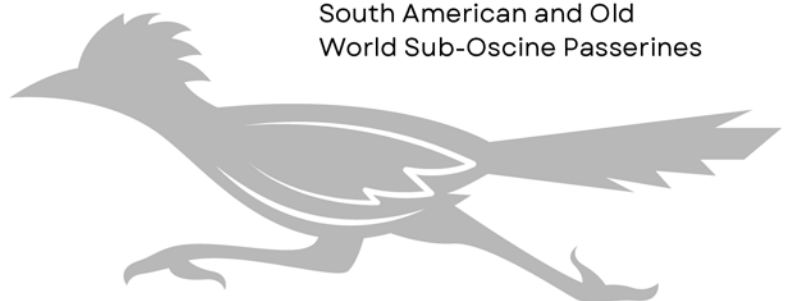
Grouse
Guineafowl
Partridge
Peafowl
Pheasant
Ptarmigan
Quail
Turkeys

Birds of Prey

Caracaras
Eagles
Falcons
Hawks
Kites
Ospreys
Owls
Vultures
Pelagic & Coastal Seabirds
Albatrosses
Anhinga
Auks
Boobies
Cormorants
Frigatebirds
Gannets
Grebes
Gulls
Jaegers
Loons
Pelicans
Penguins
Petrels
Puffins
Shearwaters
Skimmers
Skuas
Terns
Tropicbirds

Non-Passerine Land Birds

Anis
Barbets
Bee-eaters
Cuckoos
Doves
Goatsuckers
Hoopoes
Hornbills
Hummingbirds
Kingfishers
Parrots
Pigeons
Roadrunners, Swifts,
Toucans, Trogons
Woodpeckers
South American and Old
World Sub-Oscine Passerines



OFFICIAL SPECIES DESIGNATIONS

Songbirds A -

Oscine Passerines

Birds of Paradise
Bluebirds
Bowerbirds
Catbirds
Chats
Chickadees
Creepers
Crows
Dippers
Flycatchers
Gnatcatchers
Jays
Kinglets
Larks
Magpies
Mockingbirds
Nuthatches
Pipits
Robins
Shrikes
Swallows
Thrashers
Thrushes
Titmice
Vireos
Wagtails, Warblers
Waxwings
Wrens

Songbirds B -

Oscine Passerines

Blackbirds
Bobolinks
Buntings
Cardinals
Cowbirds
Crossbills
Finches
Grackles
Grosbeaks
Juncos
Meadowlarks
Oroles
Redpolls
Sparrows
Starlings
Tanagers
Towhees

MEMORIAL AWARDS

For additional information visit: www.wardfdn.org

- Dr. John P. Trabuchi Memorial Award Intermediate Decorative Lifesize Floating Waterfowl, Best Diver
- William Schultz Memorial Award Intermediate Decorative Lifesize Wildfowl, Best in Waterfowl Category
- Richard "Dick" LeMaster Memorial Award Intermediate Decorative Lifesize Floating Waterfowl, Best in Species Mallard Hen
- Mike Wavercak Memorial Award Intermediate Decorative Lifesize Floating Waterfowl, Best in Species Bufflehead
- Robert "Bob" Guge Memorial Award Novice Decorative Lifesize Wildfowl, Best Songbird

SAVE THE DATE

2025

JOIN US FOR THE CHESAPEAKE CHALLENGE HELD DURING THE CRISFIELD HERITAGE FESTIVAL IN CRISFIELD, MARYLAND, HOME OF LEM & STEVE WARD: SEPTEMBER 27, 2025

WATCH FOR SAM DYKE MEMORIAL "OLD BIRD" ANTIQUE DECOY COMPETITIONS AT MULTIPLE DECOY SHOWS



www.coresound.com



www.lwccg.com



www.awhm.org

THANK YOU FOR YOUR SUPPORT

ALAN WYCHECK
PHOTOGRAPHY



www.alanwycheckphoto.com



Windy Cape
studios



*Mounting options
to elevate your
next carving!*

Handmade
quality bases
and plaques to
embellish
and display your
artwork



- Accolades
- Islands
- Ovals
- Octagons
- Pedestals
- Pork Chops
- Rounds
- Squares
- & more



windycapestudios@gmail.com
703-338-2532
windycapestudios.square.site

150

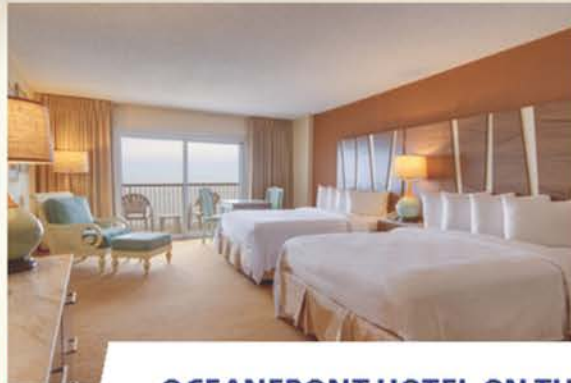
Years of Smiles

Ocean City • MD

www.ococean.com

COMPLETE OCEANFRONT GETAWAY

the only thing missing is YOU!



OCEANFRONT HOTEL ON THE BOARDWALK FEATURES:

GRAND
HOTEL

800-447-6779 | 410-289-6191
grandhoteloceancity.com
sales@sghoc.com

251 Deluxe Guest Rooms with Spectacular Ocean Views, each equipped with Microwaves, Mini Refrigerators, Coffee Makers, Irons and Ironing Boards, Spacious Balconies
Complimentary Wi-Fi and 100% Smoke Free Guest Rooms
Indoor Pool and Outdoor Pool with Sun Deck & Pool Bar*
Fitness Center
Family Entertainment Area with Two Arcade Games
Free Ample Parking in Adjacent Six Story Garage
5 On-site Dining Options, Boutique and Beach Shops*
10,000 Square Feet of Meeting Space

**Seasonal hours may apply*

21ST ST. & BOARDWALK, 2100 BALTIMORE AVE., OCEAN CITY, MD 21842

Razertip®

LEAVE YOUR MARK™



SL1



SL3



P80



SK



SS-D10



P88



Expansion modules available

Razaire™ MINI

Smoke Extractor Model X60

Enjoy a pyrography workspace that is fresh and clear of smoke with the Razaire™ MINI Smoke Extractor.

REPLACEABLE FILTERS

MULTI-STAGE CARBON FILTRATION

CAN BE USED VERTICALLY OR HORIZONTALLY



Follow us



Razertip
 PO Box 910, 301-9th Street North, Martensville, SK Canada S0K 2T0
 Phone 306-931-0889 • Toll-free (Canada/U.S.A.) 1-877-729-3787
 info@razertip.com • razertip.com